



UL LLC
1075 W Lambert Rd Suite B
Brea, CA 92821

Integrating Sphere Test Report

Relevant Standards
IES LM-79-2008, ANSI C82.77-10-2014, CIE 13.3-1995
CIE 15-2004, ANSI C78.377-2017, IES TM-30-2018

Prepared For
B-K Lighting INC

Daniel Carrejo
40429 Brickyard Dr.
Madera, CA 93636
United States

Catalog Number
OR-LED-e115-VNSP-WHP-9-0-YM-MT(3000K)

Order Number
14151565
Test Number
14151565.02

Test Date

2022-01-07

Prepared By

Austin Duff, Technician

Approved By

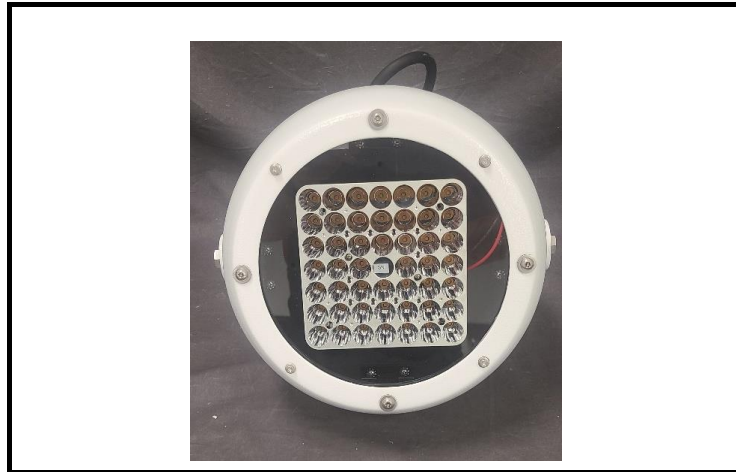
Yilmaz Yucelidag, Project Handler

The results contained in this report pertain only to the tested sample.
This report shall not be reproduced, except in full, without written approval of Underwriters Laboratories.
This report must not be used by the client to claim product certification, approval, or endorsement by
NVLAP, NIST, or any agency of the Federal Government.



Luminaire Description: Formed white metal housing with clear glass lens
Lamp: 49 White LED with optic below
Mounting: Pole/Arm
Ballast/Driver: DELTA USCI-200140GA

Luminaire



Summary of Results

Radiant Flux:	25530 mW
Luminous Flux:	8671 lm
Luminaire Efficacy:	96.2 lm/W
CCT:	3146 K
CRI (Ra):	77.8
Chromaticity (x):	0.4269
Chromaticity (y):	0.4005
Chromaticity (u):	0.2456
Chromaticity (v):	0.3457
Duv:	0.0003

Test Conditions

Test Temperature:	25.2 °C
Voltage:	120.1 VAC
Current:	0.7731 A
Power:	90.17 W
Power Factor:	0.971
Frequency:	60 Hz
Current THD:	21.9 %

Testing was performed in a 2-meter integrating sphere using the 4 π geometry method.
Absorption correction was employed for this measurement.



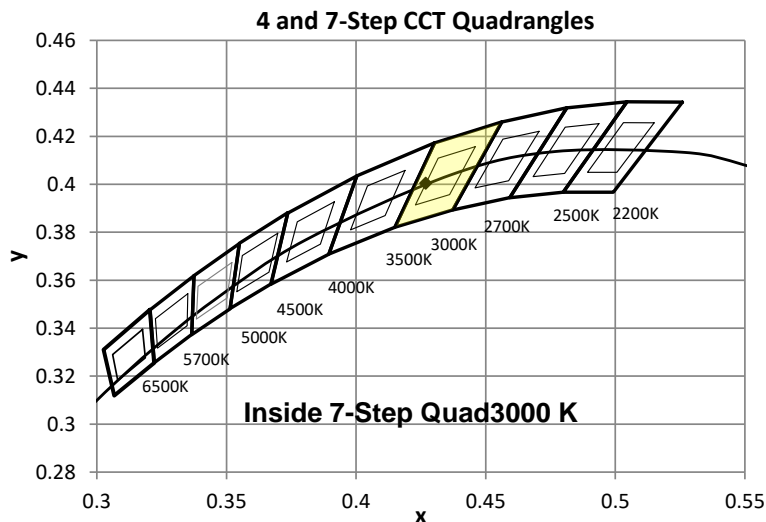
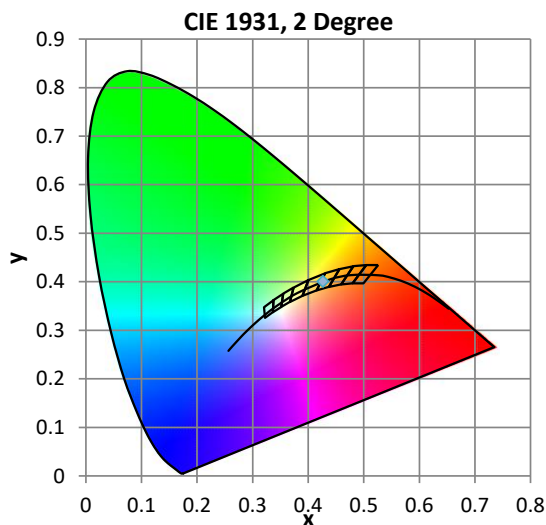
Color Quality - Integrating Sphere

Integrating Sphere Test Conditions

Temperature	Voltage	Current	Power	Power Factor	Frequency	Current THD
25.2 °C	120.1 VAC	0.7731 A	90.17 W	0.971	60 Hz	21.9 %

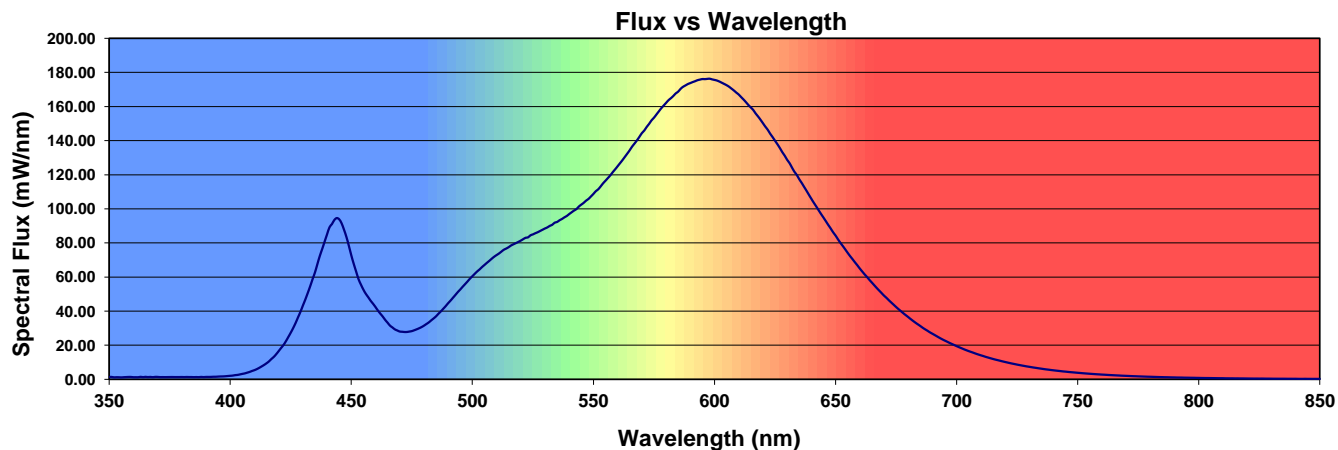
Summary of Results

Total Output:	8671 Lumens	Chromaticity (x):	0.4269
Efficacy:	96.2 lm/w	Chromaticity (y):	0.4005
CCT:	3146 K	Chromaticity (u'):	0.2456
CRI (Ra):	77.8	Chromaticity (v'):	0.5185
CRI (R9):	-17.2	TM-30 Rf:	81
Peak Wavelength:	597 nm	TM-30 Rg:	96
Dominant Wavelength:	582 nm	TM-30 Rcs,h1:	-14%
S/P Ratio:	1.35	Duv:	0.0001
M/P Ratio:	0.51	WELL Building Standard v2	



Color Rendering Index Detail

Ra (CRI)	R1	R2	R3	R4	R5	R6	R7	R8	R9	R10	R11	R12	R13	R14	R15
77.8	74.6	86.6	95.8	76.0	75.7	83.8	79.8	50.3	-17.2	70.9	74.8	70.2	77.0	97.9	65.7



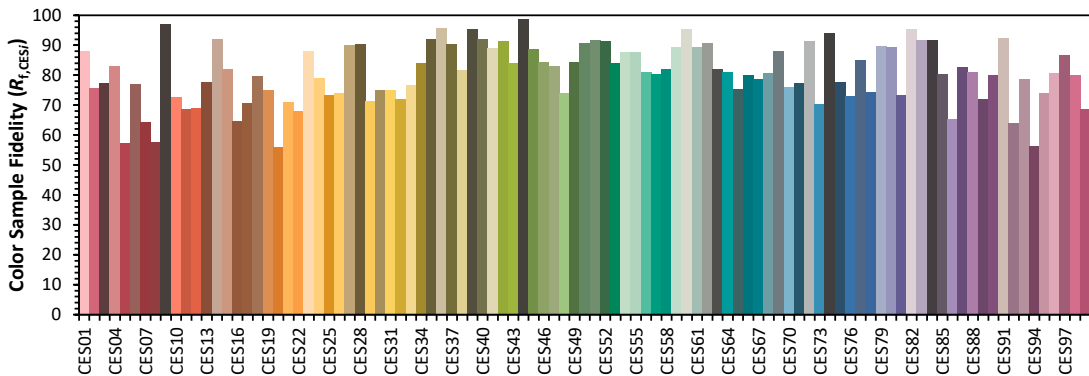
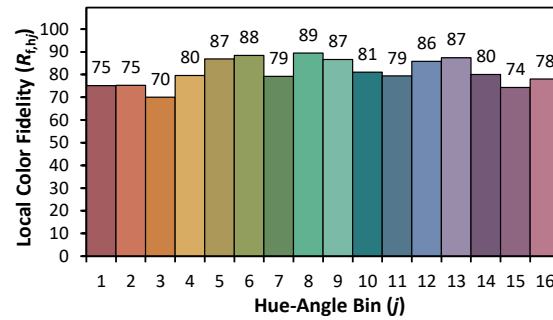
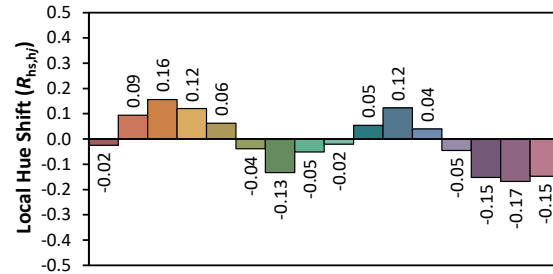
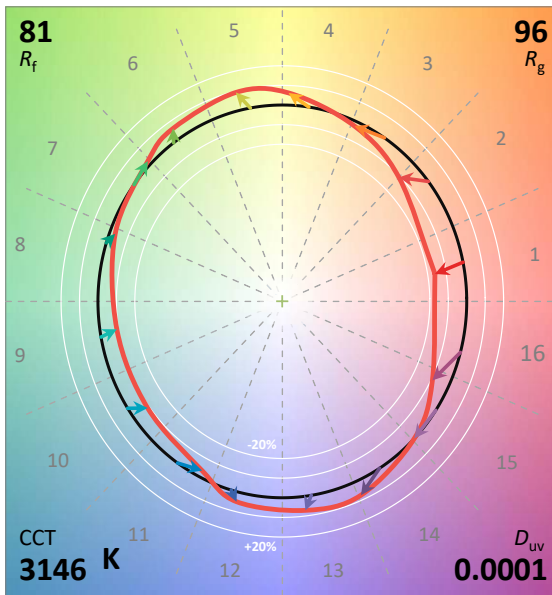
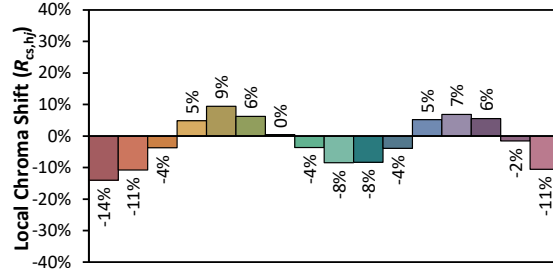
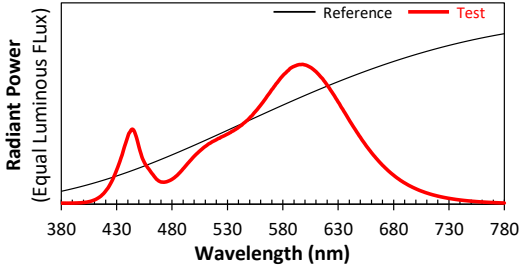
ANSI/IES TM-30-18 Color Rendition Report

Date: 2022-01-07

Manufacturer: B-K Lighting INC

Model:

OR-LED-e115-VNSP-WHP-9-0-YM-MT(3000K)



Notes: This is a recommended method for displaying ANSI/IES TM-30-18 information.

x 0.4269
 y 0.4005
 u' 0.2456
 v' 0.5185

CIE 13.3-1995
(CRI)
 R_a 78
 R_g -17

Colors are for visual orientation purposes only. Created with the IES TM-30-18 Calculator Version 2.00.