

ALPINE II - SURFACE DOWNLIGHT LED

IP66 RATED

DATE: _____ PROJECT: _____ TYPE: _____

CATALOG NUMBER LOGIC:



Driver housing required. Configure separately.

**For use with x43-x45.*

CATALOG NUMBER LOGIC

Example: SM - APII - LED - x43 - BW - BZP - 12 - C

MATERIAL

Aluminum

SERIES

SM - Surface Downlight

FIXTURE

APII - Alpine II

SOURCE

LED - with Chip on Board Construction

LED TYPE

x43 - 34W LED/2700K	x46 - 42W LED/2700K	x49 - 57W LED/2700K
x44 - 34W LED/3000K	x47 - 42W LED/3000K	x50 - 57W LED/3000K
x45 - 34W LED/4000K	x48 - 42W LED/4000K	x51 - 57W LED/4000K

OPTICS

BW - Batwing

WW - Wall Wash*

FINISH (See page 2 for full-color swatches)

Standard Finishes (BZP, BZW, BLP, BLW, WHP, WHW, SAP, VER)

Premium Finish (ABP, AMG, AQW, BCM, BGE, BPP, CAP, CMG, CRM, HUG, NBP, OCP, RMG, SDS, SMG, TXF, WCP, WIR)

Also available in RAL Finishes

LENS TYPE

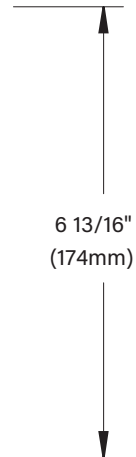
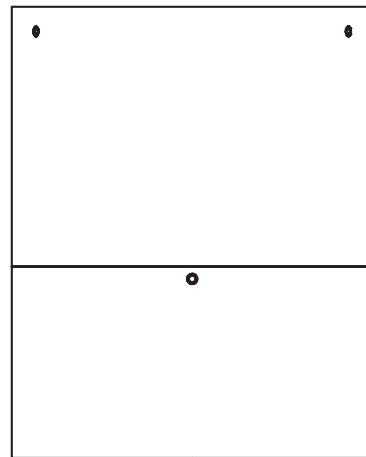
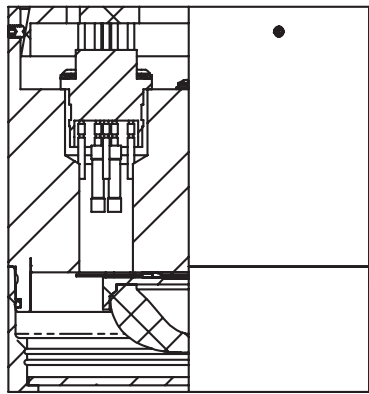
12 - Soft Focus

CAP STYLE

C - Flush

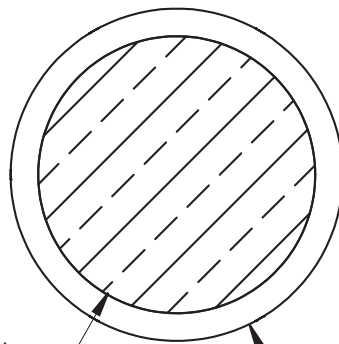
E - 90° Less Weephole

DATE: _____ PROJECT: _____ TYPE: _____



"C" CAP

"E" CAP



4 9/16" Dia.
(116mm)

5 1/2" Dia.
(139mm)

TOP VIEW

STANDARD FINISHES



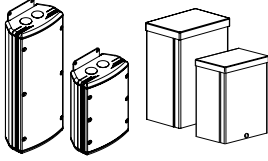
PREMIUM FINISHES



[Click Here](#) to view larger, full-color swatches of all available finishes on our website.




DATE:	PROJECT:	TYPE:
-------	----------	-------

ACCESSORIES (Configure separately)



PM3DRM & PM3RM DRM & RM

SPECIFICATIONS

ELECTRICAL	WATTAGE	34W, 42W, or 57W LED
	WIRING	XLPE Stranded 18GA wire. Rated 150C, 600V.
	REMOTE DRIVER	For use with remote LED Driver. See remote driver submittal(s) to determine remote distance, dimming range, and wiring requirements prior to detailing field installation of any remote wiring.
PHYSICAL	MATERIALS	Furnished in copper-free aluminum (6061-T6).
	BODY	Unibody design with enclosed, water-proof wireway and integral heat sink is fully machined from solid billet.
	CAP	Fully machined and accommodates one (1) lens or louver media.
	LENS	Shock resistant, tempered, glass lens is factory adhered to faceplate.
	LED	Integrated solid state system is scalable for field upgrade, provides long life, significant energy reduction and exceptional thermal management. Modular design with electrical quick disconnects permit field maintenance. Minimum 50,000 hour rated life at 70% of initial lumens (L70).
	COLOR MANAGEMENT	Chip on board technology delivers natural white light. Exact color point conformity exceeds ANSI C78.377 standard. Module exceeds 80 CRI (RA>80, R9.16). Color point uniformity 2 SDCM color control for 2.7K-4K CCT.
	OPTICS	Interchangeable OPTIKIT modules permit optical field changes.
	WATER MANAGEMENT	Patented Anti-Condensation Valve (ACV) vacuum seals optical chamber and eliminates internal condensation. Spring loaded exterior mounted ACV button facilitates removal of vacuum sealed cap for service. System re-initiates vacuum seal through normal fixture operation.
	INSTALLATION	5 1/16" dia., machined canopy permits mounting to 4" octagonal junction box (by others).
	HARDWARE	Tamper-resistant, stainless steel hardware.
FINISH	StarGuard, our 15-stage chromate-free process cleans and conversion coats aluminum components prior to application of Class 'A' TGIC polyester powder coating and is RoHS compliant.	
WARRANTY	5-year limited warranty.	
CERTIFICATION & LISTING	ITL tested to IESNA LM-79. UL Listed. Certified to CAN/CSA/ANSI Standards. RoHS compliant. Suitable for indoor or outdoor use, in wet locations, and for installation within 4' of the ground. IP65 Rated. Made in the USA with sustainable processes.	
  		

B-K LIGHTING

MADE IN THE USA

559.438.5800 | INFO@BKLIGHTING.COM | BKLIGHTING.COM