

DATE: \_\_\_\_\_ PROJECT: \_\_\_\_\_ TYPE: \_\_\_\_\_

CATALOG NUMBER LOGIC:



\*Accommodates up to 2 shielding media.

**CATALOG NUMBER LOGIC**

Example: B - OM - LED - e71/e71 - SP/FL - BLP - 12/12 - 11/11 - C (Up/Down)

**MATERIAL**

(Blank) - Aluminum B - Brass S - Stainless Steel

**SERIES**

OM - Mini-Micro Twin Cylinder

**SOURCE**

LED - with Non-Dimming Integral Driver

**LED TYPE**

e70 - 3W LED/2700K e85 - 3W LED/2700K 90 CRI

e71 - 3W LED/3000K e86 - 3W LED/3000K 90 CRI

e72 - 3W LED/4000K e87 - 3W LED/3500K 80 CRI

e73 - 3W LED/Amber

**OPTICS**

NSP - Spot (17°) MFL - Medium Flood (34°)

SP - Spot (21°) ASY - Asymmetrical (17x31°)

**FINISH (See page 2 for full-color swatches)**

Standard Finishes (BZP, BZW, BLP, BLW, WHP, WHW, SAP, VER)

Premium Finish (ABP, AMG, AQW, BCM, BGE, BPP, CAP, CMG, CRM, HUG, NBP, OCP, RMG, SDS, SMG, TXF, WCP, WIR)

Also available in RAL Finishes

Brass Finishes (MAC, POL, MIT)

Stainless Steel Finishes (MAC, POL)

**LENS TYPE**

12 - Soft Focus 13 - Rectilinear

**SHIELDING\***

11 - Honeycomb Baffle x 2

**CAP STYLE**

A - 45°

B - 90°

C - Flush Lens

D - 45° Less Weephole (Interior use only)

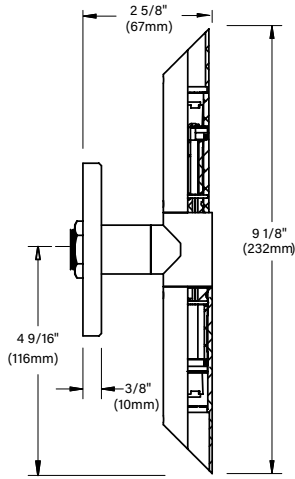
E - 90° Less Weephole (Interior use only)

**MOD OPTIONS**

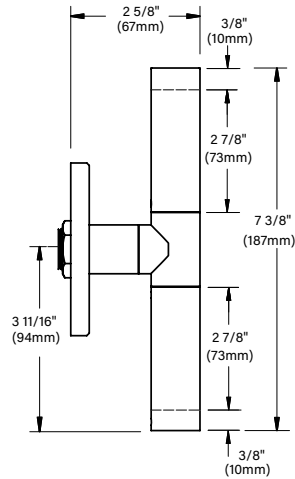
5 - 5 Ft Leads

25 - 25 Ft Leads

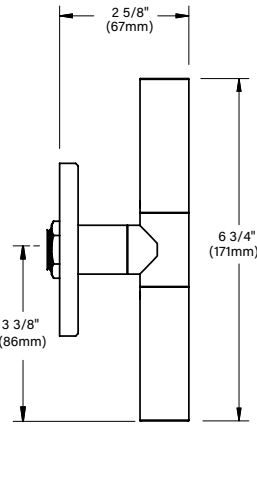
DATE: \_\_\_\_\_ PROJECT: \_\_\_\_\_ TYPE: \_\_\_\_\_



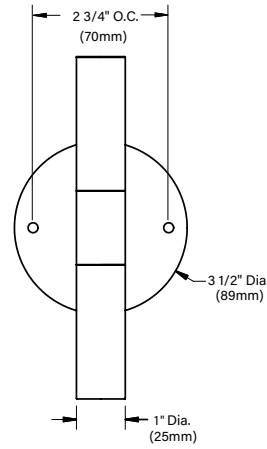
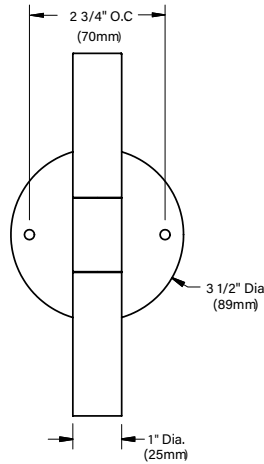
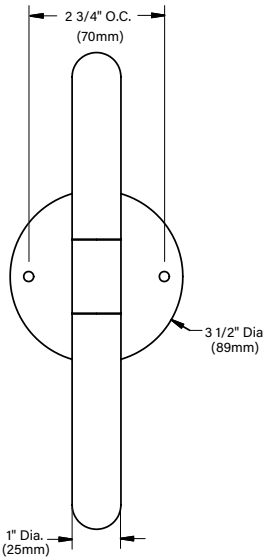
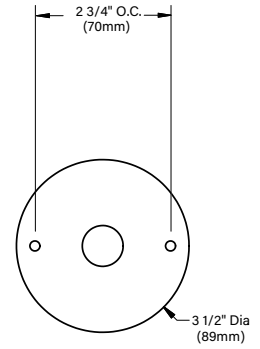
**"A/D" CAP**



**"B/E" CAP**



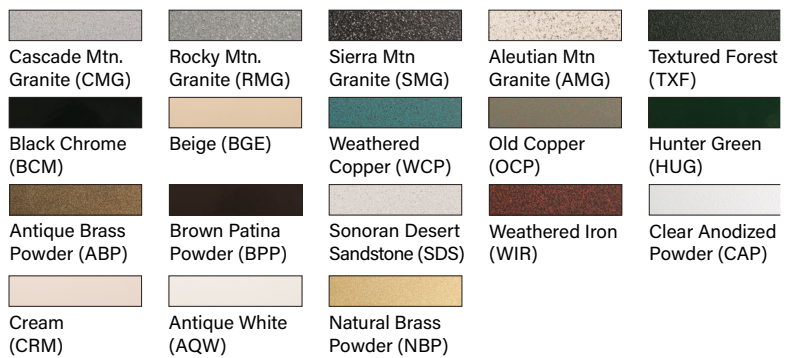
**"C" CAP**



**STANDARD FINISHES**



**PREMIUM FINISHES**

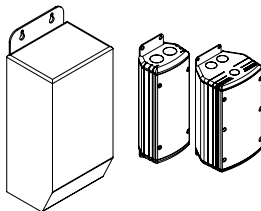


[Click Here](#) to view larger, full-color swatches of all available finishes on our website.

DATE: \_\_\_\_\_ PROJECT: \_\_\_\_\_ TYPE: \_\_\_\_\_

ACCESSORIES (Configure separately)

Drivers (Configure separately)



TR Series

UPMRM

## SPECIFICATIONS

ELECTRICAL	WATTAGE WIRING REMOTE TRANSFORMER	(2x) 3W XLPE, 18GA,150C,600V, rated and certified to UL3321. For use with 12VAC remote transformer or magnetic transformers only. B-K Lighting cannot guarantee performance with third party manufacturers' transformers.
PHYSICAL	MATERIALS BODY CAP LENS LED OPTICS INSTALLATION HARDWARE FINISH WARRANTY CERTIFICATION & LISTING	Furnished in copper-free aluminum (6061-T6), brass (360) or stainless steel (304). Unibody design with enclosed, water-proof wireway and integral heat sink is fully machined from solid billet. Fully machined and accommodates one (1) lens or louver media. Shock-resistant, tempered glass lens is factory adhered to fixture cap and provides hermetically sealed optical compartment. Integrated solid state system and modular design with electrical disconnects allow for easy field upgrade and maintenance. High power, forward throw source complies with ANSI C78.377 binning requirements and exceeds ENERGY STAR® lumen maintenance requirements. LM-80 certified components. Integral, constant current driver. 12VAC/VDC input. 50/60Hz. Proprietary input control scheme achieves power factor correction and eliminates inrush current (limited to <250mA non-dimming). Output, overvoltage, open-circuit, and short circuit protected. Conforms to Safety Std. C22.2 No. 250.13-12. Interchangeable OPTIKIT modules permit optical field changes. Color code: Narrow Spot (NSP) = red; Spot (SP) = green; Medium Flood (MFL) = yellow and Asymmetrical (ASY) = purple. 3-1/2" dia., machined canopy permits mounting to 3" octagonal junction box or 4" junction box with mud ring (by others). Tamper-resistant, stainless steel hardware. Canopy mounting screws are black oxide treated for additional corrosion resistance StarGuard, our 15-stage chromate-free process cleans and conversion coats aluminum components prior to application of Class 'A' TGIC polyester powder coating and is RoHS compliant. Powder coat or metal finish options available for brass material and metal finish option only for stainless steel material. 5-year limited warranty. ITL tested to IESNA LM-79. UL Listed. Certified to CAN/CSA/ANSI Standards. RoHS compliant. Suitable for indoor or outdoor use, in wet locations, and for installation within 4' of the ground. IP66 Rated. Made in the USA with sustainable processes.



# LAMP & DRIVER DATA (e70, e71, e72, e73)

DATE: \_\_\_\_\_ PROJECT: \_\_\_\_\_ TYPE: \_\_\_\_\_

DRIVER DATA	Input Volts	InRush Current	Operating Current	Operation Ambient Temperature
	12VAC/DC 50/60Hz	<250mA (non-dimmed)	700mA	-22°F-194°F (-30°C - 90°C)

LM79 DATA				L70 DATA		OPTICAL DATA		
BK No.	CCT (Typ.)	CRI (Typ.)	Input Watts (Typ.)	Minimum Rated Life (hrs.) 70% of initial lumens (L <sub>70</sub> )		Angle	CBCP	Delivered Lumens
e70	2700K	80	3	50,000		17°	1347	167
	2700K	80	3	50,000		21°	664	139
	2700K	80	3	50,000		28°	524	149
	2700K	~	3	50,000		17°x31°	613	151
e71	3000K	80	3	50,000		17°	1411	175
	3000K	80	3	50,000		21°	695	146
	3000K	80	3	50,000		28°	548	156
	3000K	~	3	50,000		17°x31°	642	158
e72	4000K	80	3	50,000		17°	1585	197
	4000K	80	3	50,000		21°	781	164
	4000K	80	3	50,000		28°	616	175
	4000K	~	3	50,000		17°x31°	721	178
e73	Amber (590nm)	~	3	50,000		~	~	~

OPTICS	
Optic	Angle
NSP - Narrow Spot	17°
SP - Spot	21°
MFL - Medium Flood	28°
ASY - Asymmetrical	17°x31°