

Standard Installation



Flammable



Warning



High Voltage



Hot Surface

TOOLS NEEDED:	
	Waterproof Wire Connectors
	Mounting Hardware
	Adjustable Crescent Wrench
	Torx 27 Tamper-Proof Wrench

INSTRUCTIONS PERTAINING TO A RISK OF FIRE, OR INJURY TO PERSONS IMPORTANT SAFETY INSTRUCTIONS

Lighted fixture is HOT!

WARNING - To reduce the risk of FIRE OR INJURY TO PERSONS:

Turn off/unplug and allow to cool before replacing lamp/LED. Fixture gets HOT quickly! Contact only switch/plug when turning on. Do not touch hot lens, guard, or enclosure. Keep fixture away from materials that may burn. Do not operate the luminaire fitting with a missing or damaged shield. Do not touch the source at any time. Use a soft cloth or gloves. Oil from skin may cause damage.

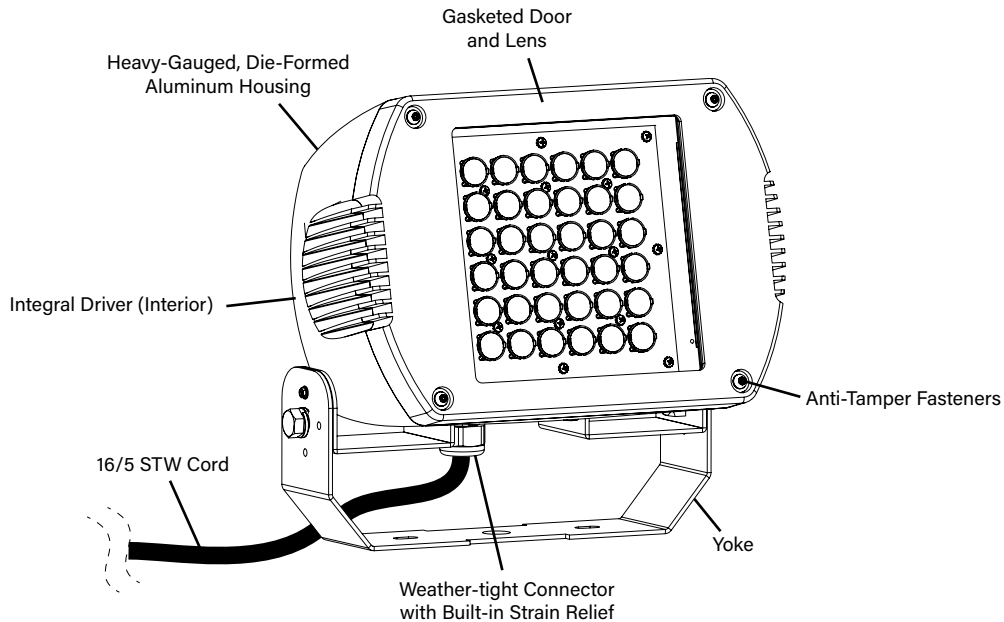
SAVE THESE INSTRUCTIONS

IMPORTANT SAFETY INFORMATION - READ, FOLLOW, AND SAVE ALL SAFETY AND INSTALLATION INSTRUCTIONS

- Product must be installed by a qualified person in a manner consistent with its intended use and in compliance with the National Electrical Code, Canadian Electrical Code, and all Local and Provincial Codes.
- Follow product label information and instructions.
- Qualified Personnel with appropriate personal protective equipment must perform all servicing of this product.
- Before wiring to power supply and during servicing, turn off and lock out power at fuse or circuit breaker before service.
- The use of accessory equipment not recommended by the manufacturer or installed contrary to instructions may cause an unsafe condition. The use of damaged components may cause an unsafe condition and void product warranty.
- Do not block light emanating from product in whole or part, as this may cause an unsafe condition.
- Never operate the fixture with missing or damaged lens. Lens must be cleaned on regular basis.
- Entire fixture may become extremely hot. Do not touch hot lens or fixture body.
- Replace LED assembly only with correct wattage and type of power supply appropriate for LED assembly.
- All gaskets, o-rings and sealing surfaces must be kept clean during installation and service; failure to do this may cause an unsafe condition and void product warranty.

IMPORTANT LISTINGS AND CERTIFICATIONS

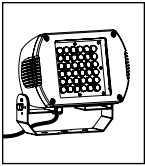
- Suitable for wet locations



ALTAIR - YOKE MOUNT

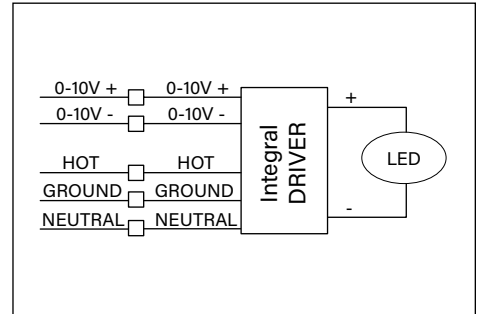
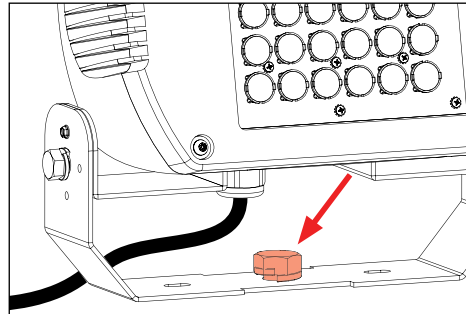
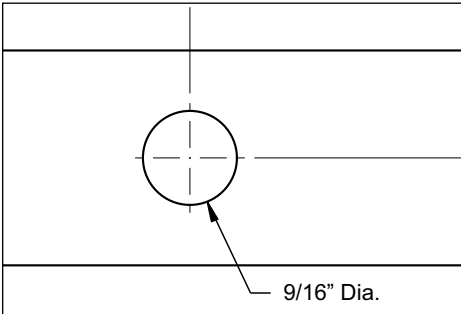
IMPORTANT SAFETY INFORMATION - READ, FOLLOW, AND SAVE THESE INSTALLATION INSTRUCTIONS

B-K LIGHTING	40429 Brickyard Drive • Madera, CA 93636 • USA 559.438.5800 • FAX 559.438.5900 www.bklighting.com • info@bklighting.com	RELEASE DATE 07/06/2023	REFERENCE NUMBER INS-2577-00
	<p><small>THIS DOCUMENT CONTAINS PROPRIETARY INFORMATION OF B-K LIGHTING, INC. AND ITS RECEIPT OR POSSESSION DOES NOT CONVEY ANY RIGHTS TO REPRODUCE, DISCLOSE ITS CONTENTS, OR TO MANUFACTURE, USE OR SELL ANYTHING IT MAY DESCRIBE. REPRODUCTION, DISCLOSURE OR USE WITHOUT SPECIFIC WRITTEN AUTHORIZATION OF B-K LIGHTING, INC. IS STRICTLY FORBIDDEN.</small></p>		



Standard Installation

Yoke Mount Installation



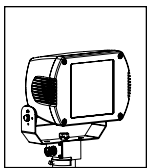
1. Prepare for installation for yoke location. Clearance hole is 9/16" diameter.
2. Line up fixture yoke to mounting location and secure with 3/4-10 hex bolt with adjustable crescent wrench.

WIRING DIAGRAM

3. Make watertight connections using waterproof wire connectors to connect incoming primary wiring to integral driver wiring as per NEC. Secondary side is factory wired. **See wiring diagram.**

**IMPORTANT SAFETY INFORMATION LISTED ON REVERSE
READ, FOLLOW, AND SAVE ALL SAFETY AND INSTALLATION INSTRUCTIONS**





Relamping Instructions



Flammable



Warning



High Voltage



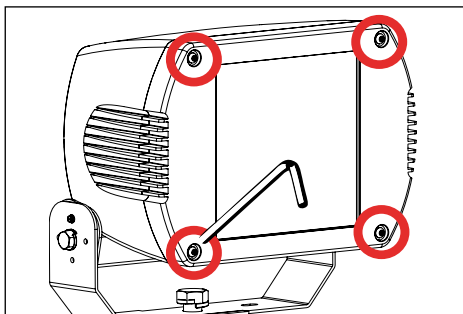
Hot Surface

TOOLS NEEDED:

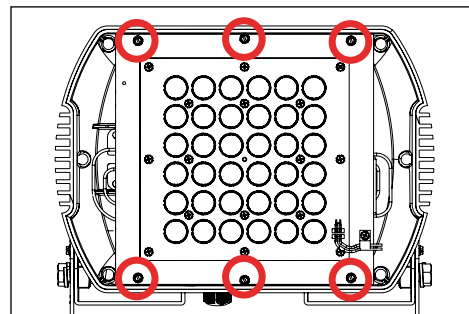
- Torx T27 Tamper Resistant Hex Bit
- 1/4 Nut Driver/Socket Wrench
- 5/16 Nut Driver/Socket Wrench
- Phillips Screwdriver
- Flat Head Screwdriver

IMPORTANT SAFETY INFORMATION - READ, FOLLOW, AND SAVE ALL SAFETY AND INSTALLATION INSTRUCTIONS

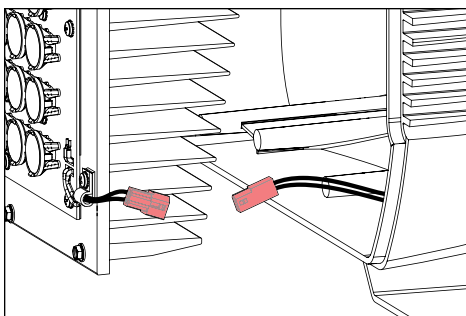
- Product must be installed by a qualified person in a manner consistent with its intended use and in compliance with the National Electrical Code, Canadian Electrical Code, and all Local and Provincial Codes.
- Follow product label information and instructions.
- Qualified Personnel must perform all servicing or relamping of this product.
- Before wiring to power supply and during servicing or relamping, turn off power at fuse or circuit breaker before service.



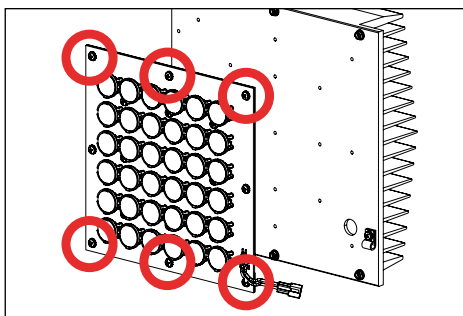
1. Remove faceplate by loosening four (4) tamper-resistant hex screws using a Torx T27 tamper resistant hex bit.



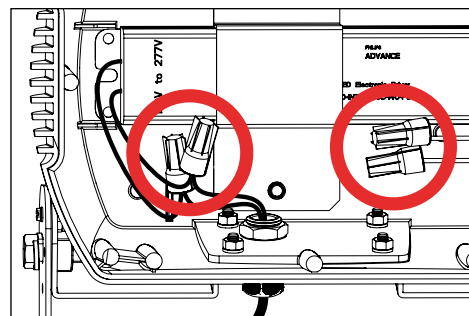
2. Prepare to remove LED board, thermal pad and heatsink by loosening six (6) #8-32 slotted screws using a 1/4 nut driver/socket wrench or a flat head screwdriver.



3. Use quick disconnect to disconnect heatsink and LED board from driver.

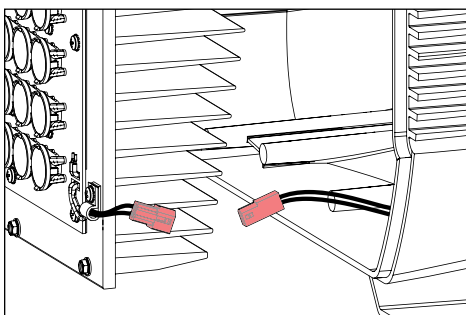


4. **If replacing LED board:** Remove LED board and thermal pad from heatsink by loosening sixteen (16) Phillips screws using Phillips screwdriver. Line up new thermal pad and LED board on heatsink. Replace board and thermal pad on heatsink with thermal pad closest to heatsink, then reverse install.

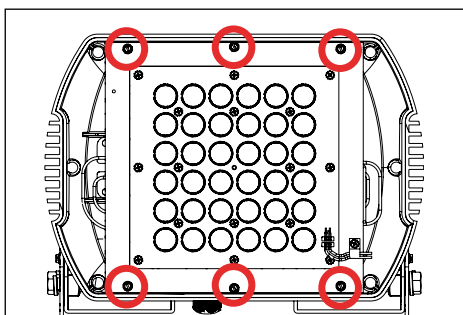


5. **If replacing LED driver:** Turn off branch circuit. Disconnect wire nuts from incoming primary to primary side of driver.
6. Remove two (2) #10-24 hex nuts from driver bracket using a 5/16 nut driver with socket. Replace with new driver and reinstall driver bracket.

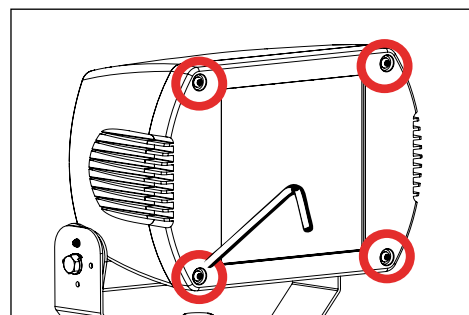
Connect incoming primary to driver primary leads for correct incoming voltage.



7. Reconnect quick disconnect from driver secondary side to LED board assembly.



8. Secure LED board and heatsink by tightening six (6) #8-32 slotted screws using a 1/4 nut driver/socket wrench or flat head screw driver.



9. Replace faceplate by tightening four (4) tamper-resistant hex screws using a Torx T27 tamper resistant hex bit.

IMPORTANT SAFETY INFORMATION - READ, FOLLOW, AND SAVE THESE INSTALLATION INSTRUCTIONS

B-K LIGHTING

40429 Brickyard Drive • Madera, CA 93636 • USA
559.438.5800 • FAX 559.438.5900
www.bklighting.com • info@bklighting.com

RELEASE DATE
07/06/2023

REFERENCE NUMBER
INS-2473-00

THIS DOCUMENT CONTAINS PROPRIETARY INFORMATION OF B-K LIGHTING, INC. AND ITS RECEIPT OR POSSESSION DOES NOT CONVEY ANY RIGHTS TO REPRODUCE, DISCLOSE ITS CONTENTS, OR TO MANUFACTURE, USE OR SELL ANYTHING IT MAY DESCRIBE. REPRODUCTION, DISCLOSURE OR USE WITHOUT SPECIFIC WRITTEN AUTHORIZATION OF B-K LIGHTING, INC. IS STRICTLY FORBIDDEN.