



INDEPENDENT TESTING LABORATORIES, INC.
3386 LONGHORN ROAD, BOULDER, CO 80302 USA

PHONE: (303)442-1255 • FAX: (303)449-5274 • E-MAIL: itl@itlboulder.com • WEBSITE: www.itlboulder.com
REPORT NUMBER: ITL63760

DATE: 12/24/09
REVISED: 02/01/10

PAGE 1

PREPARED FOR: B-K LIGHTING, INC.

CATALOG NUMBER: MN-LED-e17-FL-12-C; SM-MN-e17-FL-12-C; TT-LED-e17; CH-LED-e17

LUMINAIRE: MACHINED CYLINDRICAL METAL HOUSING, ONE CIRCUIT BOARD WITH 3 LEDS, ONE CLEAR PLASTIC LENS WITH MICRO-PRISMATIC SURFACE OPPOSITE LEDS AND ONE CONCAVE CONICAL LENS ELEMENT PER LED, CLEAR FLAT MICRO-PRISMATIC GLASS LENS IN MACHINED WHITE PAINTED CYLINDRICAL METAL FRAME WITH UNFINISHED INTERIOR, LENS PRISMS IN.

LAMPS: THREE 2.5-WATT WHITE LIGHT EMITTING DIODES (LEDs) EACH WITH CLEAR HEMISPHERICAL INTEGRAL PLASTIC LENS, LEDS AIMED AT THE HORIZON.

TOTAL INPUT WATTS = 8.1 AT 12.0 VOLTS

LED DRIVER: INTEGRAL

NOTE: DATA SHOWN IS ABSOLUTE FOR THE SAMPLE PROVIDED AT RATED INPUT VOLTAGE (12VAC, 60Hz) TO THE LED DRIVER. LAMP INFORMATION PROVIDED BY CLIENT.

TEST PROCEDURE: IESNA LM-79-08

TEST DISTANCE = 25.25 FEET

FLOODLIGHT CHARACTERISTICS

IES TYPE

MAXIMUM CANDLEPOWER

4H X 4V

945. AT 0.0 H, 0.5 V

HORIZONTAL BEAM ANGLE (50%)

30.3 deg

VERTICAL BEAM ANGLE (50%)

30.5 deg

HORIZONTAL FIELD ANGLE (10%)

56.6 deg

VERTICAL FIELD ANGLE (10%)

57.6 deg

BEAM LUMENS (% FIXTURE)

148. (45.1 %)

FIELD LUMENS (% FIXTURE)

270. (82.4 %)

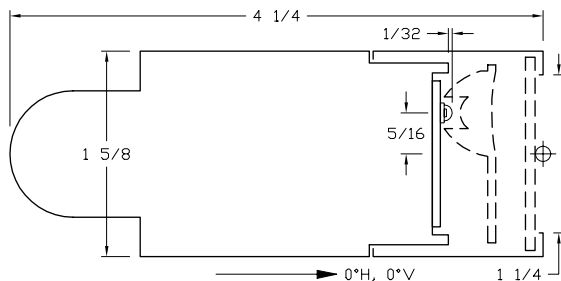
TOTAL LUMENS (% FIXTURE)

328. (100.0 %)

EFFICACY = 40.5 Lm/W

AXIAL CANDLEPOWER

DEG	HORIZ.	DEG	VERT.
90.0	0.	90.0	0.
85.0	1.	85.0	0.
75.0	2.	75.0	2.
65.0	4.	65.0	4.
55.0	7.	55.0	7.
47.5	10.	47.5	10.
42.5	15.	42.5	16.
37.5	26.	37.5	30.
33.0	45.	33.0	55.
29.0	84.	29.0	99.
25.5	137.	25.5	155.
22.5	206.	22.5	227.
19.5	295.	19.5	325.
17.0	392.	17.0	421.
15.0	480.	15.0	507.
13.0	568.	13.0	594.
11.0	654.	11.0	682.
9.0	734.	9.0	759.
7.0	814.	7.0	829.
5.0	876.	5.0	881.
3.0	922.	3.0	924.
1.0	941.	1.0	944.
0.0	944.	0.0	944.
-1.0	941.	-1.0	936.
-3.0	922.	-3.0	911.
-5.0	876.	-5.0	869.
-7.0	814.	-7.0	794.
-9.0	734.	-9.0	709.
-11.0	654.	-11.0	620.
-13.0	568.	-13.0	538.
-15.0	480.	-15.0	459.
-17.0	392.	-17.0	375.
-19.5	295.	-19.5	293.
-22.5	206.	-22.5	197.
-25.5	137.	-25.5	134.
-29.0	84.	-29.0	83.
-33.0	45.	-33.0	49.
-37.5	26.	-37.5	30.
-42.5	15.	-42.5	18.
-47.5	10.	-47.5	13.
-55.0	7.	-55.0	8.
-65.0	4.	-65.0	5.
-75.0	2.	-75.0	2.
-85.0	1.	-85.0	1.
-90.0	0.	-90.0	0.

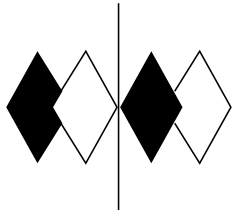


Checked *N WHITE*

Approved *R BEATTIE*

ALL CANDELA AND LUMEN VALUES IN THIS REPORT ARE BASED ON ABSOLUTE PHOTOMETRY.

THIS REPORT IS BASED ON PUBLISHED INDUSTRY PROCEDURES. FIELD PERFORMANCE MAY DIFFER FROM LABORATORY PERFORMANCE.



itl boulder
THE LIGHT CENTER OF THE INDUSTRY SINCE 1955

INDEPENDENT TESTING LABORATORIES, INC.
3386 LONGHORN ROAD, BOULDER, CO 80302 USA

PHONE: (303)442-1255 • FAX: (303)449-5274 • E-MAIL: itl@itlboulder.com • WEBSITE: www.itlboulder.com

REPORT NUMBER: ITL63760
PREPARED FOR: B-K LIGHTING, INC.

DATE: 12/24/09
REVISED: 02/01/10

CANDELA TABULATION

PAGE 2

AVERAGE OF RIGHT AND LEFT SIDES

	0.0	1.0	3.0	5.0	7.0	9.0	11.0	13.0	15.0	17.0	19.5	22.5	25.5	29.0	33.0	37.5	42.5	47.5	55.0	65.0	75.0	85.0	90.0
90.0	0.	0.	0.	0.	0.	0.	0.	0.	0.	0.	0.	0.	0.	0.	0.	0.	0.	0.	0.	0.	0.	0.	0.
85.0	0.	0.	0.	0.	0.	1.	1.	1.	1.	1.	1.	1.	1.	1.	1.	1.	0.	1.	0.	0.	0.	0.	0.
75.0	2.	2.	2.	2.	2.	2.	2.	2.	2.	2.	2.	2.	2.	2.	2.	2.	2.	2.	1.	1.	1.	0.	0.
65.0	4.	4.	4.	4.	4.	4.	4.	4.	4.	4.	4.	4.	4.	3.	3.	3.	3.	3.	3.	2.	1.	0.	0.
55.0	7.	7.	6.	7.	6.	6.	6.	6.	6.	6.	6.	6.	6.	6.	6.	5.	5.	4.	4.	2.	1.	0.	0.
47.5	10.	10.	10.	10.	10.	10.	10.	10.	9.	9.	9.	9.	8.	8.	7.	7.	7.	6.	5.	3.	1.	0.	0.
42.5	16.	16.	16.	16.	15.	15.	14.	14.	13.	13.	12.	11.	11.	10.	9.	9.	8.	7.	5.	3.	2.	1.	0.
37.5	30.	30.	29.	29.	27.	26.	24.	23.	21.	19.	18.	16.	15.	13.	12.	11.	9.	8.	6.	3.	2.	1.	0.
33.0	55.	56.	53.	51.	49.	45.	41.	38.	35.	32.	28.	24.	21.	18.	15.	13.	11.	9.	6.	4.	2.	1.	0.
29.0	99.	98.	95.	90.	85.	79.	71.	64.	57.	50.	42.	36.	30.	24.	20.	15.	12.	9.	6.	4.	2.	1.	0.
25.5	155.	154.	152.	144.	134.	122.	111.	99.	87.	77.	64.	51.	41.	31.	24.	18.	13.	9.	7.	4.	2.	1.	0.
22.5	227.	228.	222.	211.	196.	176.	160.	141.	123.	107.	88.	68.	52.	38.	28.	20.	14.	10.	7.	4.	2.	1.	0.
19.5	325.	323.	313.	296.	275.	251.	225.	197.	170.	146.	118.	88.	66.	47.	32.	22.	14.	10.	7.	4.	2.	1.	0.
17.0	421.	418.	404.	380.	357.	326.	296.	259.	223.	188.	148.	110.	80.	54.	35.	23.	15.	10.	7.	4.	2.	1.	0.
15.0	507.	504.	488.	461.	429.	392.	348.	305.	262.	221.	175.	125.	91.	60.	38.	24.	15.	10.	7.	4.	2.	1.	0.
13.0	594.	592.	577.	548.	508.	461.	412.	362.	310.	259.	200.	142.	101.	66.	40.	25.	15.	10.	7.	4.	2.	1.	0.
11.0	682.	681.	664.	630.	584.	531.	475.	416.	355.	296.	227.	160.	110.	71.	42.	25.	15.	10.	7.	4.	2.	1.	0.
9.0	759.	757.	741.	706.	656.	595.	530.	460.	396.	327.	251.	175.	117.	76.	44.	25.	15.	10.	7.	4.	2.	1.	0.
7.0	829.	826.	810.	771.	713.	652.	581.	501.	431.	354.	266.	183.	125.	77.	46.	26.	16.	10.	7.	4.	2.	1.	0.
5.0	881.	881.	862.	816.	761.	699.	624.	539.	454.	377.	280.	194.	133.	80.	46.	26.	15.	10.	7.	4.	2.	1.	0.
3.0	924.	921.	897.	850.	791.	726.	646.	555.	467.	388.	291.	203.	135.	83.	47.	26.	15.	10.	7.	4.	2.	1.	0.
1.0	944.	943.	920.	873.	813.	734.	651.	565.	476.	390.	295.	206.	137.	84.	46.	26.	15.	10.	7.	4.	2.	1.	0.
0.0	944.	941.	922.	876.	814.	734.	654.	568.	480.	392.	295.	206.	137.	84.	45.	26.	15.	10.	7.	4.	2.	1.	0.
-1.0	936.	933.	914.	872.	808.	732.	652.	565.	480.	393.	294.	205.	137.	83.	45.	25.	15.	10.	7.	4.	2.	1.	0.
-3.0	911.	910.	888.	843.	782.	711.	632.	542.	463.	382.	289.	199.	133.	81.	45.	25.	15.	10.	6.	4.	2.	1.	0.
-5.0	869.	866.	837.	795.	741.	670.	595.	513.	434.	360.	276.	193.	129.	78.	43.	24.	15.	10.	6.	4.	2.	1.	0.
-7.0	794.	791.	767.	734.	681.	619.	552.	480.	407.	339.	256.	182.	123.	76.	41.	23.	14.	9.	6.	4.	2.	1.	0.
-9.0	709.	709.	692.	659.	615.	560.	500.	433.	371.	307.	233.	168.	114.	71.	40.	22.	13.	9.	6.	4.	2.	1.	0.
-11.0	620.	621.	610.	577.	538.	489.	438.	382.	328.	273.	210.	153.	105.	67.	37.	21.	13.	9.	6.	4.	2.	1.	0.
-13.0	538.	537.	526.	495.	460.	418.	374.	328.	282.	237.	186.	135.	93.	60.	35.	20.	13.	9.	6.	4.	2.	1.	0.
-15.0	459.	457.	445.	421.	389.	352.	315.	275.	238.	202.	160.	115.	82.	55.	32.	19.	12.	9.	6.	3.	2.	1.	0.
-17.0	375.	374.	367.	350.	320.	293.	262.	229.	197.	170.	135.	99.	71.	48.	30.	18.	12.	8.	6.	3.	2.	1.	0.
-19.5	293.	291.	281.	267.	246.	221.	198.	176.	152.	128.	104.	79.	59.	41.	26.	17.	11.	8.	5.	3.	2.	1.	0.
-22.5	197.	197.	193.	183.	170.	155.	141.	126.	109.	93.	76.	59.	45.	31.	22.	15.	10.	7.	5.	3.	2.	1.	0.
-25.5	134.	133.	128.	123.	116.	104.	94.	84.	74.	65.	53.	42.	33.	25.	18.	13.	9.	7.	5.	3.	2.	1.	0.
-29.0	83.	82.	81.	78.	73.	66.	60.	54.	48.	41.	35.	29.	23.	19.	14.	11.	8.	6.	5.	3.	2.	1.	0.
-33.0	49.	48.	48.	46.	43.	39.	38.	33.	30.	27.	23.	19.	16.	14.	11.	9.	7.	6.	4.	3.	2.	1.	0.
-37.5	30.	29.	29.	29.	27.	25.	23.	21.	19.	18.	16.	14.	12.	10.	9.	7.	6.	5.	4.	2.	1.	1.	0.
-42.5	18.	19.	18.	18.	17.	16.	15.	14.	13.	12.	11.	10.	9.	8.	7.	6.	5.	4.	3.	2.	1.	1.	0.
-47.5	13.	13.	13.	12.	12.	11.	11.	10.	10.	9.	9.	8.	7.	7.	6.	5.	4.	4.	3.	2.	1.	0.	0.
-55.0	8.	8.	8.	8.	8.	8.	7.	7.	7.	7.	6.	6.	5.	5.	4.	4.	3.	3.	2.	2.	1.	0.	0.
-65.0	5.	5.	5.	5.	5.	5.	5.	4.	4.	4.	4.	4.	3.	3.	3.	3.	2.	2.	2.	1.	1.	0.	0.
-75.0	2.	2.	3.	3.	3.	3.	2.	2.	2.	2.	2.	2.	2.	2.	2.	1.	1.	1.	1.	1.	0.	0.	0.
-85.0	1.	1.	1.	1.	1.	1.	1.	1.	1.	1.	1.	1.	1.	1.	0.	0.	0.	0.	0.	0.	0.	0.	0.
-90.0	0.	0.	0.	0.	0.	0.	0.	0.	0.	0.	0.	0.	0.	0.	0.	0.	0.	0.	0.	0.	0.	0.	0.

BEAM EDGE = 473. CP = 50% OF MAX
FIELD EDGE = 95. CP = 10% OF MAX

THIS REPORT IS BASED ON PUBLISHED INDUSTRY PROCEDURES. FIELD PERFORMANCE MAY DIFFER FROM LABORATORY PERFORMANCE.



INDEPENDENT TESTING LABORATORIES, INC.
3386 LONGHORN ROAD, BOULDER, CO 80302 USA

PHONE: (303)442-1255 • FAX: (303)449-5274 • E-MAIL: itl@itlboulder.com • WEBSITE: www.itlboulder.com

REPORT NUMBER: ITL63760
PREPARED FOR: B-K LIGHTING, INC.

DATE: 12/24/09
REVISED: 02/01/10

CANDELA TABULATION - FIELD ONLY

PAGE 3

AVERAGE OF RIGHT AND LEFT SIDES

	0.0	1.0	3.0	5.0	7.0	9.0	11.0	13.0	15.0	17.0	19.5	22.5	25.5	29.0	33.0	37.5	42.5	47.5	55.0	65.0	75.0	85.0	90.0
90.0																							
85.0																							
75.0																							
65.0																							
55.0																							
47.5																							
42.5																							
37.5																							
33.0																							
29.0	99.	98.	95.																				
25.5	155.	154.	152.	144.	134.	122.	111.	99.															
22.5	227.	228.	222.	211.	196.	176.	160.	141.	123.	107.													
19.5	325.	323.	313.	296.	275.	251.	225.	197.	170.	146.	118.												
17.0	421.	418.	404.	380.	357.	326.	296.	259.	223.	188.	148.	110.											
15.0	507.	504.	488.	461.	429.	392.	348.	305.	262.	221.	175.	125.											
13.0	594.	592.	577.	548.	508.	461.	412.	362.	310.	259.	200.	142.	101.										
11.0	682.	681.	664.	630.	584.	531.	475.	416.	355.	296.	227.	160.	110.										
9.0	759.	757.	741.	706.	656.	595.	530.	460.	396.	327.	251.	175.	117.										
7.0	829.	826.	810.	771.	713.	652.	581.	501.	431.	354.	266.	183.	125.										
5.0	881.	881.	862.	816.	761.	699.	624.	539.	454.	377.	280.	194.	133.										
3.0	924.	921.	897.	850.	791.	726.	646.	555.	467.	388.	291.	203.	135.										
1.0	944.	943.	920.	873.	813.	734.	651.	565.	476.	390.	295.	206.	137.										
0.0	944.	941.	922.	876.	814.	734.	654.	568.	480.	392.	295.	206.	137.										
-1.0	936.	933.	914.	872.	808.	732.	652.	565.	480.	393.	294.	205.	137.										
-3.0	911.	910.	888.	843.	782.	711.	632.	542.	463.	382.	289.	199.	133.										
-5.0	869.	866.	837.	795.	741.	670.	595.	513.	434.	360.	276.	193.	129.										
-7.0	794.	791.	767.	734.	681.	619.	552.	480.	407.	339.	256.	182.	123.										
-9.0	709.	709.	692.	659.	615.	560.	500.	433.	371.	307.	233.	168.	114.										
-11.0	620.	621.	610.	577.	538.	489.	438.	382.	328.	273.	210.	153.	105.										
-13.0	538.	537.	526.	495.	460.	418.	374.	328.	282.	237.	186.	135.											
-15.0	459.	457.	445.	421.	389.	352.	315.	275.	238.	202.	160.	115.											
-17.0	375.	374.	367.	350.	320.	293.	262.	229.	197.	170.	135.	99.											
-19.5	293.	291.	281.	267.	246.	221.	198.	176.	152.	128.	104.												
-22.5	197.	197.	193.	183.	170.	155.	141.	126.	109.														
-25.5	134.	133.	128.	123.	116.	104.																	
-29.0																							
-33.0																							
-37.5																							
-42.5																							
-47.5																							
-55.0																							
-65.0																							
-75.0																							
-85.0																							
-90.0																							

BEAM EDGE = 473. CP = 50% OF MAX
FIELD EDGE = 95. CP = 10% OF MAX

THIS REPORT IS BASED ON PUBLISHED INDUSTRY PROCEDURES. FIELD PERFORMANCE MAY DIFFER FROM LABORATORY PERFORMANCE.



INDEPENDENT TESTING LABORATORIES, INC.
3386 LONGHORN ROAD, BOULDER, CO 80302 USA

PHONE: (303)442-1255 • FAX: (303)449-5274 • E-MAIL: itl@itlboulder.com • WEBSITE: www.itlboulder.com

REPORT NUMBER: ITL63760
PREPARED FOR: B-K LIGHTING, INC.

DATE: 12/24/09
REVISED: 02/01/10

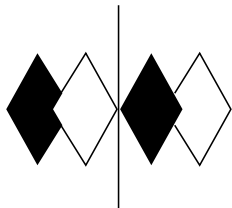
LUMEN TABULATION

PAGE 4

AVERAGE OF RIGHT AND LEFT SIDES

	0	2	4	6	8	10	12	14	16	18	21	24	27	31	35	40	45	50	60	70	80	90	TOTAL
90	0.0	0.0	0.0	0.0	0.0	0.0	0.0	0.0	0.0	0.0	0.0	0.0	0.0	0.0	0.0	0.0	0.0	0.0	0.0	0.0	0.0	0.0	0.1
80	0.0	0.0	0.0	0.0	0.0	0.0	0.0	0.0	0.0	0.0	0.0	0.0	0.0	0.0	0.0	0.0	0.0	0.0	0.0	0.0	0.0	0.0	0.3
70	0.0	0.0	0.0	0.0	0.0	0.0	0.0	0.0	0.0	0.0	0.0	0.0	0.0	0.0	0.0	0.0	0.0	0.1	0.0	0.0	0.0	0.0	0.6
60	0.0	0.0	0.0	0.0	0.0	0.0	0.0	0.0	0.0	0.1	0.1	0.0	0.1	0.1	0.1	0.1	0.1	0.0	0.1	0.0	0.0	0.0	0.9
50	0.0	0.0	0.0	0.0	0.0	0.0	0.0	0.0	0.0	0.0	0.0	0.0	0.0	0.0	0.0	0.0	0.0	0.0	0.0	0.0	0.0	0.0	0.6
45	0.0	0.0	0.0	0.0	0.0	0.0	0.0	0.0	0.0	0.1	0.0	0.0	0.1	0.0	0.1	0.0	0.0	0.0	0.0	0.0	0.0	0.0	0.8
40	0.1	0.1	0.1	0.1	0.1	0.1	0.1	0.1	0.1	0.1	0.1	0.1	0.1	0.1	0.1	0.1	0.1	0.0	0.1	0.0	0.0	0.0	1.3
35	0.1	0.1	0.1	0.1	0.1	0.1	0.1	0.1	0.1	0.1	0.1	0.1	0.1	0.1	0.1	0.1	0.0	0.0	0.0	0.0	0.0	0.0	1.6
31	0.2	0.2	0.2	0.2	0.2	0.2	0.2	0.1	0.1	0.1	0.1	0.1	0.1	0.1	0.1	0.1	0.1	0.0	0.0	0.0	0.0	0.0	2.4
27	0.3	0.3	0.3	0.2	0.2	0.2	0.2	0.2	0.1	0.2	0.1	0.1	0.1	0.1	0.1	0.1	0.0	0.0	0.0	0.0	0.0	0.0	2.7
24	0.4	0.4	0.4	0.4	0.3	0.3	0.3	0.2	0.2	0.2	0.2	0.1	0.1	0.1	0.1	0.1	0.0	0.0	0.0	0.0	0.0	0.0	3.8
21	0.6	0.6	0.5	0.5	0.5	0.4	0.4	0.3	0.3	0.3	0.2	0.2	0.2	0.1	0.1	0.1	0.0	0.0	0.0	0.0	0.0	0.0	5.1
18	0.5	0.5	0.5	0.4	0.4	0.4	0.3	0.3	0.2	0.3	0.2	0.1	0.1	0.1	0.1	0.1	0.0	0.0	0.0	0.0	0.0	0.0	4.3
16	0.6	0.6	0.6	0.5	0.5	0.4	0.4	0.3	0.3	0.3	0.2	0.2	0.1	0.1	0.1	0.1	0.0	0.0	0.0	0.0	0.0	0.0	5.1
14	0.7	0.7	0.7	0.6	0.6	0.5	0.4	0.4	0.3	0.3	0.2	0.2	0.1	0.1	0.1	0.1	0.0	0.0	0.0	0.0	0.0	0.0	6.0
12	0.8	0.8	0.8	0.7	0.6	0.6	0.5	0.4	0.3	0.4	0.3	0.2	0.2	0.1	0.1	0.1	0.0	0.0	0.0	0.0	0.0	0.0	6.8
10	0.9	0.9	0.9	0.8	0.7	0.6	0.5	0.5	0.4	0.4	0.3	0.2	0.2	0.1	0.1	0.1	0.0	0.0	0.0	0.0	0.0	0.0	7.5
8	1.0	1.0	0.9	0.9	0.8	0.7	0.6	0.5	0.4	0.5	0.3	0.2	0.2	0.1	0.1	0.1	0.0	0.0	0.0	0.0	0.0	0.0	8.2
6	1.1	1.0	1.0	0.9	0.8	0.7	0.6	0.5	0.4	0.5	0.3	0.2	0.2	0.1	0.1	0.1	0.0	0.0	0.0	0.0	0.0	0.0	8.7
4	1.1	1.1	1.0	1.0	0.9	0.8	0.7	0.5	0.5	0.5	0.3	0.2	0.2	0.1	0.1	0.1	0.0	0.0	0.0	0.0	0.0	0.0	9.0
2	1.1	1.1	1.1	1.0	0.9	0.8	0.7	0.6	0.5	0.5	0.3	0.2	0.2	0.1	0.1	0.1	0.0	0.0	0.0	0.0	0.0	0.0	9.2
0	1.1	1.1	1.1	1.0	0.9	0.8	0.7	0.6	0.5	0.5	0.3	0.2	0.2	0.1	0.1	0.1	0.0	0.0	0.0	0.0	0.0	0.0	9.1
-2	1.1	1.1	1.0	0.9	0.9	0.8	0.6	0.5	0.4	0.5	0.3	0.2	0.2	0.1	0.1	0.1	0.0	0.0	0.0	0.0	0.0	0.0	8.9
-4	1.1	1.0	1.0	0.9	0.8	0.7	0.6	0.5	0.4	0.5	0.3	0.2	0.2	0.1	0.1	0.1	0.0	0.0	0.0	0.0	0.0	0.0	8.4
-6	1.0	0.9	0.9	0.8	0.7	0.7	0.6	0.5	0.4	0.4	0.3	0.2	0.2	0.1	0.1	0.1	0.0	0.0	0.0	0.0	0.0	0.0	7.8
-8	0.9	0.8	0.8	0.7	0.7	0.6	0.5	0.4	0.4	0.4	0.3	0.2	0.2	0.1	0.1	0.1	0.0	0.0	0.0	0.0	0.0	0.0	7.1
-10	0.8	0.7	0.7	0.7	0.6	0.5	0.5	0.4	0.3	0.4	0.3	0.2	0.1	0.1	0.1	0.1	0.0	0.0	0.0	0.0	0.0	0.0	6.3
-12	0.7	0.6	0.6	0.6	0.5	0.4	0.4	0.3	0.3	0.3	0.2	0.2	0.1	0.1	0.1	0.0	0.0	0.0	0.0	0.0	0.0	0.0	5.4
-14	0.6	0.5	0.5	0.5	0.4	0.4	0.3	0.3	0.2	0.3	0.2	0.1	0.1	0.1	0.1	0.0	0.0	0.0	0.0	0.0	0.0	0.0	4.6
-16	0.5	0.4	0.4	0.4	0.4	0.3	0.3	0.2	0.2	0.2	0.2	0.1	0.1	0.1	0.1	0.0	0.0	0.0	0.0	0.0	0.0	0.0	3.9
-18	0.5	0.5	0.5	0.4	0.4	0.4	0.3	0.3	0.2	0.3	0.2	0.1	0.1	0.1	0.1	0.1	0.0	0.0	0.0	0.0	0.0	0.0	4.5
-21	0.4	0.4	0.3	0.3	0.3	0.3	0.2	0.2	0.2	0.2	0.1	0.1	0.1	0.1	0.1	0.1	0.0	0.0	0.0	0.0	0.0	0.0	3.2
-24	0.2	0.2	0.2	0.2	0.2	0.2	0.1	0.1	0.1	0.1	0.1	0.1	0.1	0.1	0.1	0.0	0.0	0.0	0.0	0.0	0.0	0.0	2.3
-27	0.2	0.2	0.2	0.2	0.2	0.1	0.1	0.1	0.1	0.1	0.1	0.1	0.1	0.1	0.1	0.1	0.0	0.0	0.0	0.0	0.0	0.0	2.0
-31	0.1	0.1	0.1	0.1	0.1	0.1	0.1	0.1	0.1	0.1	0.1	0.1	0.1	0.1	0.0	0.0	0.0	0.0	0.0	0.0	0.0	0.0	1.3
-35	0.1	0.1	0.1	0.1	0.1	0.1	0.1	0.1	0.1	0.1	0.1	0.0	0.1	0.0	0.0	0.0	0.0	0.0	0.0	0.0	0.0	0.0	1.1
-40	0.1	0.1	0.1	0.1	0.0	0.0	0.0	0.0	0.0	0.0	0.0	0.0	0.0	0.0	0.0	0.0	0.0	0.0	0.0	0.0	0.0	0.0	0.8
-45	0.0	0.0	0.0	0.0	0.0	0.0	0.0	0.0	0.0	0.0	0.0	0.0	0.0	0.0	0.0	0.0	0.0	0.0	0.0	0.0	0.0	0.0	0.6
-50	0.0	0.0	0.0	0.0	0.0	0.0	0.0	0.0	0.0	0.1	0.1	0.0	0.1	0.0	0.0	0.0	0.0	0.0	0.0	0.0	0.0	0.0	0.8
-60	0.0	0.0	0.0	0.0	0.0	0.0	0.0	0.0	0.0	0.0	0.0	0.0	0.0	0.0	0.0	0.0	0.0	0.0	0.0	0.0	0.0	0.0	0.5
-70	0.0	0.0	0.0	0.0	0.0	0.0	0.0	0.0	0.0	0.0	0.0	0.0	0.0	0.0	0.0	0.0	0.0	0.0	0.0	0.0	0.0	0.0	0.3
-80	0.0	0.0	0.0	0.0	0.0	0.0	0.0	0.0	0.0	0.0	0.0	0.0	0.0	0.0	0.0	0.0	0.0	0.0	0.0	0.0	0.0	0.0	0.1
-90	19.1	18.7	17.7	16.4	14.9	13.3	11.5	9.8	8.2	9.5	6.8	4.8	4.3	2.7	2.1	1.4	1.0	1.2	0.5	0.2	0.0	0.0	164.0

LUMEN TOTAL THIS PAGE = 164.0



INDEPENDENT TESTING LABORATORIES, INC.
3386 LONGHORN ROAD, BOULDER, CO 80302 USA

PHONE: (303)442-1255 • FAX: (303)449-5274 • E-MAIL: itl@itlboulder.com • WEBSITE: www.itlboulder.com

REPORT NUMBER: ITL63760
PREPARED FOR: B-K LIGHTING, INC.

DATE: 12/24/09
REVISED: 02/01/10

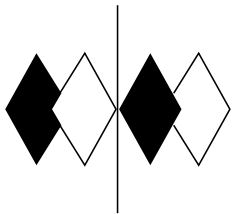
LUMEN TABULATION - FIELD ONLY

PAGE 5

AVERAGE OF RIGHT AND LEFT SIDES

	0	2	4	6	8	10	12	14	16	18	21	24	27	31	35	40	45	50	60	70	80	90	TOTAL
90																							0.0
80																							0.0
70																							0.0
60																							0.0
50																							0.0
45																							0.0
40																							0.0
35																							0.0
31																							0.0
27	0.2	0.2																					0.5
24	0.3	0.3	0.3	0.2	0.2	0.2	0.2																1.7
21	0.4	0.4	0.4	0.4	0.3	0.3	0.3	0.2	0.2														2.8
18	0.6	0.6	0.5	0.5	0.5	0.4	0.4	0.3	0.3	0.3	0.3												4.3
16	0.5	0.5	0.5	0.4	0.4	0.4	0.3	0.3	0.2	0.3	0.2												3.9
14	0.6	0.6	0.6	0.5	0.5	0.4	0.4	0.3	0.3	0.3	0.3	0.2											4.6
12	0.7	0.7	0.7	0.6	0.6	0.5	0.4	0.4	0.3	0.3	0.3	0.2	0.2										5.6
10	0.8	0.8	0.8	0.7	0.6	0.6	0.5	0.4	0.3	0.4	0.3	0.2											6.4
8	0.9	0.9	0.9	0.8	0.7	0.6	0.5	0.5	0.4	0.4	0.3	0.2											7.1
6	1.0	1.0	0.9	0.9	0.8	0.7	0.6	0.5	0.4	0.5	0.3	0.2											7.8
4	1.1	1.0	1.0	0.9	0.8	0.7	0.6	0.5	0.4	0.5	0.3	0.2											8.3
2	1.1	1.1	1.0	1.0	0.9	0.8	0.7	0.5	0.5	0.5	0.3	0.2											8.6
0	1.1	1.1	1.1	1.0	0.9	0.8	0.7	0.6	0.5	0.5	0.3	0.2											8.7
-2	1.1	1.1	1.1	1.0	0.9	0.8	0.7	0.6	0.5	0.5	0.3	0.2											8.7
-4	1.1	1.1	1.0	0.9	0.9	0.8	0.6	0.5	0.4	0.5	0.3	0.2											8.5
-6	1.1	1.0	1.0	0.9	0.8	0.7	0.6	0.5	0.4	0.5	0.3	0.2											8.0
-8	1.0	0.9	0.9	0.8	0.7	0.7	0.6	0.5	0.4	0.4	0.3	0.2											7.4
-10	0.9	0.8	0.8	0.7	0.7	0.6	0.5	0.4	0.4	0.4	0.3	0.2											6.7
-12	0.8	0.7	0.7	0.7	0.6	0.5	0.5	0.4	0.3	0.4	0.3	0.2											5.9
-14	0.7	0.6	0.6	0.6	0.5	0.4	0.4	0.3	0.3	0.3	0.2												4.9
-16	0.6	0.5	0.5	0.5	0.4	0.4	0.3	0.3	0.2	0.3	0.2												4.2
-18	0.5	0.4	0.4	0.4	0.4	0.3	0.3	0.2	0.2	0.2	0.2												3.5
-21	0.5	0.5	0.5	0.4	0.4	0.4	0.3	0.3	0.2	0.3													3.8
-24	0.4	0.4	0.3	0.3	0.3	0.3	0.2	0.2															2.3
-27	0.2	0.2	0.2	0.2	0.2																		1.1
-31																							0.0
-35																							0.0
-40																							0.0
-45																							0.0
-50																							0.0
-60																							0.0
-70																							0.0
-80																							0.0
-90																							0.0
	18.2	17.7	16.5	15.3	13.8	12.1	10.5	8.7	7.0	7.8	5.0	2.6	0.0	0.0	0.0	0.0	0.0	0.0	0.0	0.0	0.0	0.0	135.2

LUMEN TOTAL THIS PAGE = 135.2



itl boulder
THE LIGHT CENTER OF THE INDUSTRY SINCE 1955

INDEPENDENT TESTING LABORATORIES, INC.
3386 LONGHORN ROAD, BOULDER, CO 80302 USA

PHONE: (303)442-1255 • FAX: (303)449-5274 • E-MAIL: itl@itlboulder.com • WEBSITE: www.itlboulder.com

REPORT NUMBER: ITL63760
PREPARED FOR: B-K LIGHTING, INC.

DATE: 12/24/09
REVISED: 02/01/10

ISOCANDELA CURVES

PAGE 6

AVERAGE OF RIGHT AND LEFT SIDES

