

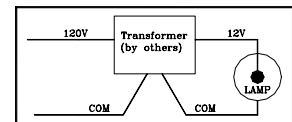
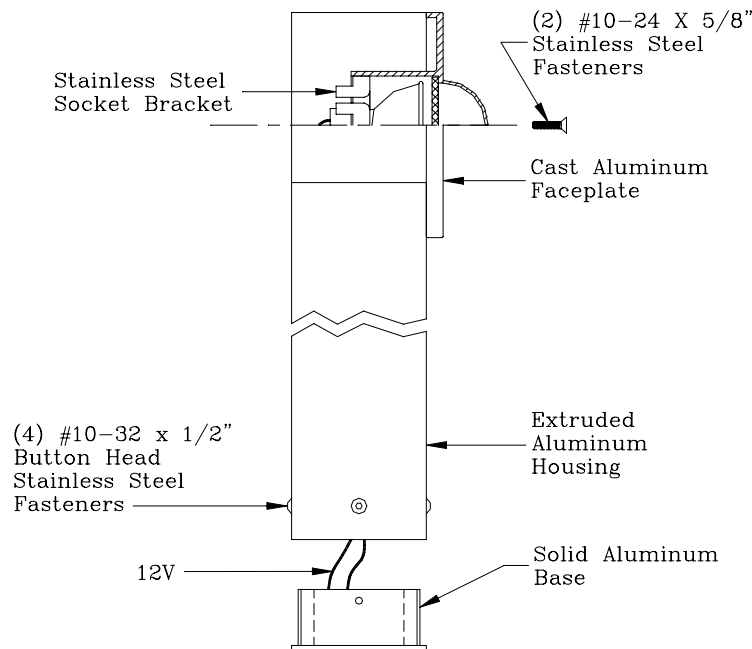
B-K LIGHTING, INC.

40429 Brickyard Drive, Madera, CA 93638. Phone: (559) 438-5800
http://www.bklighting.com

IMPORTANT SAFETY INFORMATION – READ, FOLLOW, AND SAVE ALL SAFETY AND INSTALLATION INSTRUCTIONS

- Product must be installed by a Licensed Electrician in a manner consistent with its intended use, and in compliance with the National Electrical Code, Canadian Electrical Code, and all Local and Provincial Codes.
- Follow product label information and instructions.
- Qualified Personnel must perform all servicing or relamping of this product.
- Before wiring to power supply and during servicing or relamping, turn off power at fuse or circuit breaker before service.
- The use of accessory equipment not recommended by the manufacturer or installed contrary to instructions may cause an unsafe condition. The use of damaged components may cause an unsafe condition and void product warranty.
- Do not block light emanating from product in whole or part, as this may cause an unsafe condition.
- Never operate the fixture with missing or damaged lens. Lens must be cleaned on regular basis.
- Lighted lamp gets hot very quickly. Allow it to cool before replacing lamp.
- Entire fixture may become extremely hot. Do not touch hot lens or fixture body. Do not touch the lamp at any time. Use a clean, dry, soft cloth to handle the lamp. Oil from skin may damage the lamp and cause it to rupture.
- Replace lamp only with correct wattage and type of lamp marked on fixture label.
- All gaskets, o-rings, and sealing surfaces must be kept clean during installation and service; failure to do this may cause an unsafe condition and void product warranty.

BOLLARD STAR INSTALLATION INSTRUCTIONS



WIRING DIAGRAM

1. Remove four (4) #10-32 Button Head Cap Screws at the base of fixture. Remove base from fixture.
2. Secure base to solid surface (i.e. wood, concrete) using appropriate hardware (i.e. wood screws, lag bolts, anchor studs; by other) for said surface.
 - a. If using B-K Lighting's Power Pipe mounting option, please refer to the Power Pipe Installation Instructions.
3. If fixture was ordered with a lamp, the lamp is installed and ready for use. Skip to step 7.
4. Remove two (2) #10-24 Flat Head Cap Screws from faceplate.
5. Squeeze tabs of stainless steel bracket in back of faceplate to remove socket assembly. Install maximum 50W MR16 lamp into socket. Be sure to align pins in lamp with socket holes. Push lamp straight in until seated firmly against bracket. If lamp installation is difficult, slightly rock lamp back and forth parallel with pins in lamp to help seat lamp.
6. Reinstall faceplate to housing by reattaching two (2) #10-24 FHCS
7. Pull 12V wiring from remote transformer and make electrical connections to lamp leads using proper wire connectors (by others).
 - a. If using B-K Lighting's Integral Transformer option, pull 120V wiring and connect to the primary side of transformer using proper wire connectors (by others).
8. Install housing (with faceplate) onto base and secure using four (4) #10-32 BHCS.