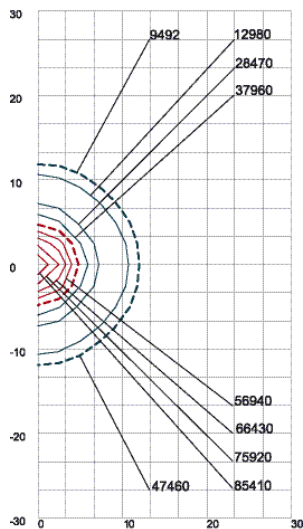


# Photometric Data

## E-17 Metal Halide

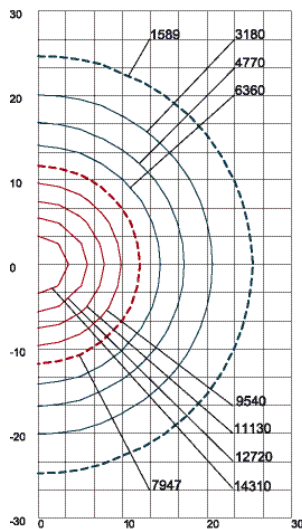
BK No.	Lamp Watts	Description	Rated Life	Initial Lumens	Mean Lumens	CRI	CCT(K)
106	50	50W/E-17/MH/MED/Clear	10,000	4,000	3,000	82	3,000
107	50	50W/E-17/MH/MED/Diffuse	10,000	3,560	2,640	82	3,000
110	70	70W/E-17/MH/MED/Clear	10,000	5,900	4,700	82	3,000
111	70	70W/E-17/MH/MED/Diffuse	10,000	5,700	4,600	82	3,000
114	100	100W/E-17/MH/MED/Clear	12,500	8,800	7,000	85	3,000
115	100	100W/E-17/MH/MED/Diffuse	12,500	8,500	6,800	85	3,000
116	150	150W/E-17/MH/MED/Clear	9,000	12,500	9,920	92	3,750
117	150	150W/E-17/MH/MED/Diffuse	9,000	12,500	9,200	92	3,400
118	175	175W/E-17/MH/MED/Clear	10,000	13,500	9,100	65	4,000
119	175	175W/E-17/MH/MED/Diffuse	10,000	13,000	8,380	65	3,700

**NARROW SPOT**



B-K FILENAME : TY11-175-NS-MH CLEAR-ITLIES  
 Lamp: 175W Clear ED-17 Metal Halide  
 IES Beam Type: 2H x 2V  
 Max. Candela: 94920 at 0°H 0°V  
 Beam Spread (at 50% Max CD): 47460 at 10°H 10°V  
 Field Spread (at 10% Max CD): 9492 at 24°H 23°V  
 Total Lumens: 4960

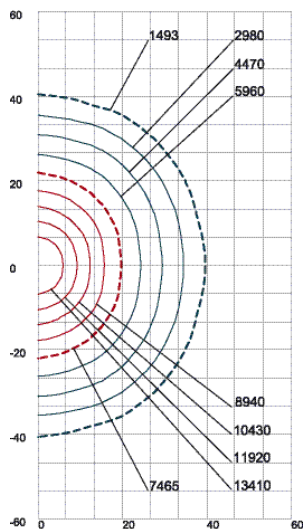
**SPOT**



B-K FILENAME : TY11-175-SP SATIN-MH CLEAR-ITLIES  
 Lamp: 175W Clear ED-17 Metal Halide  
 IES Beam Type: 4H x 4V  
 Max. Candela: 15895 at 0°H 0°V  
 Beam Spread (at 50% Max CD): 7947 at 24°H 23°V  
 Field Spread (at 10% Max CD): 1589 at 51°H 49°V  
 Total Lumens: 3620

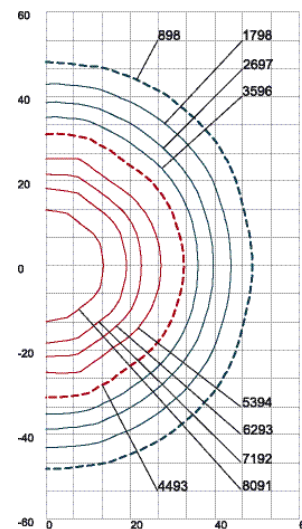
Lumen & Candela Conversion Multipliers	
150W	.96
100W	.65
70W	.44
50W	.27

**FLOOD**



B-K FILENAME : TY11-175-FL-MH CLEAR-ITLIES  
 Lamp: 175W Clear ED-17 Metal Halide  
 IES Beam Type: 5H x 5V  
 Max. Candela: 14931 at 0°H 0°V  
 Beam Spread (at 50% Max CD): 7465 at 36°H 44°V  
 Field Spread (at 10% Max CD): 1493 at 79°H 82°V  
 Total Lumens: 9195

**WIDE FLOOD**



B-K FILENAME : TY11-175-WF-MH CLEAR-ITLIES  
 Lamp: 175W Clear ED-17 Metal Halide Clear  
 IES Beam Type: 5H x 5V  
 Max. Candela: 8988 at 0°H 0°V  
 Beam Spread (at 50% Max CD): 4493 at 65°H 62°V  
 Field Spread (at 10% Max CD): 898 at 96°H 96°V  
 Total Lumens: 9269