

the power of

MINI-MICRO™ iLUME™

PROJECT:	
TYPE:	
CATALOG NUMBER:	
NOTES:	

CATALOG NUMBER LOGIC

S

-

MI

-

LED

-

e28

-

I

-

POL

-

2

-

A

Example S - MI - LED - e28 - I - POL - 2 - A

Material ————

Blank - Aluminum
B - Brass
S - Stainless Steel

Series ————

MI - Mini-Micro™ iLUME™

Source ————

LED - 'e' Technology with Integral Driver

Lamp ————

e28 - 1W LED/3K/Side **e31** - 1WLED/Blue/Side **e34** - 3W LED/3K/Side
e29 - 1W LED/4K/Side **e32** - 1WLED/Green/Side **e35** - 3W LED/4K/Side
e30 - 1W LED/Red/Side **e33** - 1W LED/Amber/Side

Installation ————

I - Invisi™ mount
F - Flush mount
S - Surface mount

Finish ————

Aluminum & Brass Finish

Powder Coat Color	Satin	Wrinkle
Bronze	BZP	BZW
Black	BLP	BLW
White (Gloss)	WHP	WHW
Aluminum	SAP	—
Verde	—	VER

Brass

Machined	MAC
Polished	POL
Mitique™	MIT

Stainless Faceplates

Machined	MAC
Polished	POL
Brushed	BRU

*Also available in Premium Finishes
 See submittal SUB-1439-00 for Premium Finishes*

Optical Openings ————

1 - Single
2 - 2 at 180°
4 - 4 at 90°

Faceplate Style ————

A - Solid
B - Round Accent

LM79 DATA

BK No.	CCT(Typ.)	Input Watts (Typ.)	CRI (Typ.)
e28	3000K White	1.1	72
e29	4000K White	1.1	66
e30	Red (625nm)	1.1	~
e31	Blue (460nm)	1.1	~
e32	Green (525nm)	1.1	~
e33	Amber (592nm)	1.1	~
e34	3000K White	2.8	72
e35	4000K White	2.8	66

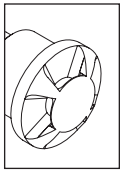
L70 DATA

Minimum Rated Life (hrs.) 70% of initial lumens (L70)
35,000
35,000
35,000
35,000
50,000
50,000
50,000
50,000

*OPTICAL DATA

Beam Type	Angle
Radial	360°h x 270°v
Radial	360°h x 270°v
Radial	360°h x 270°v
Radial	360°h x 270°v
Radial	360°h x 270°v
Radial	360°h x 270°v
Radial	360°h x 270°v
Radial	360°h x 270°v

THIS DOCUMENT CONTAINS PROPRIETARY INFORMATION OF B-K LIGHTING, INC. AND ITS RECEIPT OR POSSESSION DOES NOT CONVEY ANY RIGHTS TO REPRODUCE, DISCLOSE ITS CONTENTS, OR TO MANUFACTURE, USE OR SELL ANYTHING IT MAY DESCRIBE. REPRODUCTION, DISCLOSURE OR USE WITHOUT SPECIFIC WRITTEN AUTHORIZATION OF B-K LIGHTING, INC. IS STRICTLY FORBIDDEN.

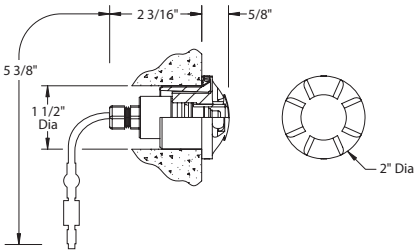


the power of 

MINI-MICRO™ iLUME™

PROJECT:	
TYPE:	

INVISI™ MOUNT

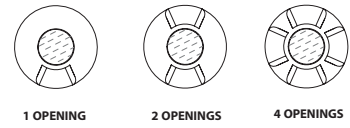


FACEPLATE DETAIL

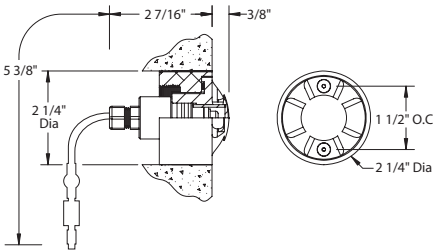
STYLE 'A'



STYLE 'B'



FLUSH MOUNT



FACEPLATE DETAIL

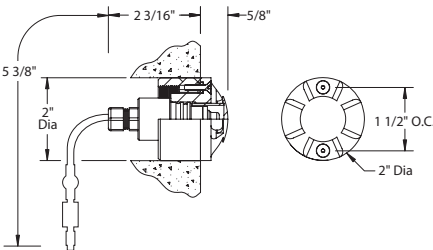
STYLE 'A'



STYLE 'B'



SURFACE MOUNT

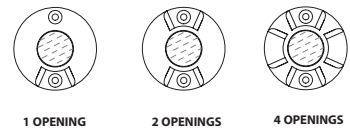


FACEPLATE DETAIL

STYLE 'A'



STYLE 'B'



SPECIFICATIONS

GreenSource Initiative™

Metal and packaging components are made from recycled materials. Manufactured using renewable solar energy, produced onsite. Returnable to manufacturer at end of life to ensure cradle-to-cradle handling. Packaging contains no chlorofluorocarbons (CFC's). Use of this product may qualify for GreenSource efficacy and recycling rebate(s). Consult www.bklighting.com/greensource for program requirements.

Materials

Furnished in Copper-Free Aluminum (Type 6061-T6), Brass (Type 360) or Stainless Steel (Type 316).

Body

Fully machined from solid billet. Unibody design provides enclosed, water-proof wireway and integral heat sink for maximum component life. High temperature, silicone 'O' Ring provides water-tight seal. Provided with hard-coat (Type III) black anodize finish for maximum corrosion resistance. Weather-tight cable connector with 5'0", 18Ga., 2 wire low voltage cable.

Faceplate

Machined from solid, copper-free aluminum, brass or stainless steel. Available with one, two, or four optical openings. Specify solid faceplate (A) or center aperture (B).

InvisiMount™ features concealed stainless steel set screw for maximum visual appeal. Flush and Surface mount feature countersunk holes for flush hardware mounting with [2] tamper-resistant, stainless steel mounting screws.

Lens

Shock resistant, tempered, translucent glass lens is factory adhered to faceplate and provides hermetically sealed optical compartment.

BKSSL™

Screw-based, side-emitting, multi-directional, integrated solid state system with 'e' technology is scalable for field upgrade. Modular design with electrical quick disconnects permit field maintenance.

Integral non-dimming driver. Up to 50,000 hour rated life at 70% of initial lumens (L70). BKSSL technology provides long life, significant energy reduction and exceptional thermal management.

Installation

Fast cure epoxy provides for direct installation into construction material, eliminating the need for masonry or drywall anchors.

InvisiMount™ features fully machined concealed copper-free aluminum mounting flange for accurate faceplate position and 360° faceplate rotation for precise orientation. Hard-coat (Type III) black anodize finish for maximum corrosion resistance.

Flush Mount features fully machined collar with top edge to be installed flush with finished surface. Collar material and finish to match faceplate. (2) Threaded holes for faceplate installation.

Surface Mount features fully machined copper-free aluminum installation collar. Provided with hard-coat (Type III) black anodize finish for maximum corrosion resistance. (2) Threaded holes for faceplate installation.

Transformer

For use with 12VAC  remote transformer.

Wiring

Teflon® coated, 18AWG, 600V, 250° C rated and certified to UL 1659 standard.

Hardware

Tamper-resistant, stainless steel hardware. Faceplate screws are additionally black oxide treated for additional corrosion resistance.

Finish

StarGuard® (Pat. Pend.), a RoHs compliant, 15 stage chromate-free process cleans and conversion coats aluminum components prior to application of Class 'A' TGIC polyester powder coating. Brass components are available in powder coat or handcrafted metal finish. Stainless steel components are available in handcrafted metal finish. (Brushed finish for interior use only).

Warranty

5 year limited warranty.

Certification and Listing

ITL tested to IESNA LM-79. Lighting Facts Registration per USDOE (www.lightingfacts.com). ETL Listed to ANSI/UL Standard 1838 and UL Standard 8750 and Certified to CAN/CSA C22.2 No. 9, CSA TIL B-58B. RoHs compliant. Suitable for indoor or outdoor use. Suitable for installation in combustible materials (Type Non-IC). Suitable for use in wet locations. Suitable for installation within 4' of the ground. Made in USA.



*Teflon is a registered trademark of DuPont Corporation.
*Energy Star is a registered trademark of the United States Environmental Protection Agency.