



UL LLC  
1075 W Lambert Rd Suite B  
Brea, CA 92821

## Integrating Sphere Test Report

Relevant Standards  
IES LM-79-2008, ANSI C82.77-10-2014, CIE 13.3-1995  
CIE 15-2004, ANSI C78.377-2017, IES TM-30-2018

**Prepared For**  
**B-K Lighting INC**

Daniel Carrejo  
40429 Brickyard Dr.  
Madera, CA 93636  
United States

**Catalog Number**

**RI-LED-TR-E132-NSP-WHP-9-C-INC-MT-PROTO-(3500K)**

Order Number

13742921

Test Number

13742921.12

Test Date

2021-04-30

Prepared By

Austin Duff, Technician

Approved By

Eric Gaudreau, Engineering Leader

The results contained in this report pertain only to the tested sample.  
This report shall not be reproduced, except in full, without written approval of Underwriters Laboratories.  
This report must not be used by the client to claim product certification, approval, or endorsement by  
NVLAP, NIST, or any agency of the Federal Government.



**Luminaire Description:** White formed metal housing and clear glass lens  
**Lamp Description:** One (1) White LED with optic attached  
**Ballast/Driver:** One (1) PowerSelect PS60U100C14R  
**Mounting Style:** Pole/Arm

**Luminaire**



**Summary of Results**

Radiant Flux:	2668 mW
Luminous Flux:	858.8 lm
Luminaire Efficacy:	60.9 lm/W
CCT:	3756 K
CRI (Ra):	80.1
Chromaticity (x):	0.3904
Chromaticity (y):	0.3795
Chromaticity (u):	0.2306
Chromaticity (v):	0.3362
Duv:	-0.0019

**Test Conditions**

Test Temperature:	24.4 °C
Voltage:	120.2 VAC
Current:	0.1193 A
Power:	14.10 W
Power Factor:	0.984
Frequency:	60 Hz
Current THD:	12.6 %

Testing was performed in a 2-meter integrating sphere using the 4 $\pi$  geometry method.  
Absorption correction was employed for this measurement.



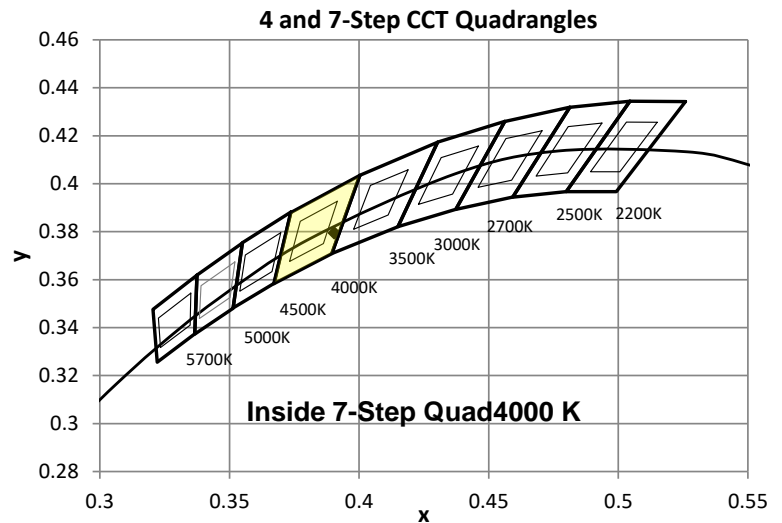
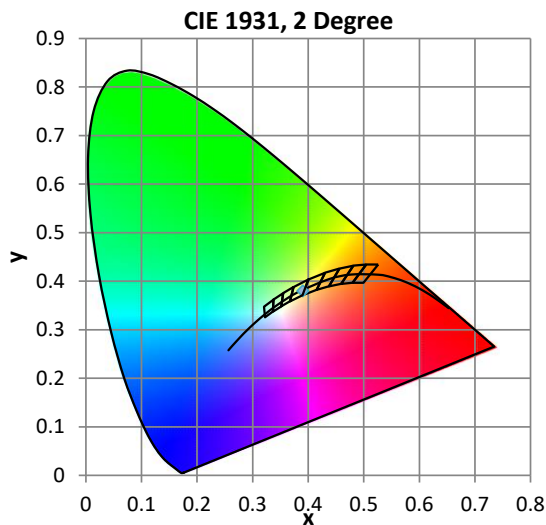
## Color Quality - Integrating Sphere

### Integrating Sphere Test Conditions

Temperature	Voltage	Current	Power	Power Factor	Frequency	Current THD
24.4 °C	120.2 VAC	0.1193 A	14.10 W	0.984	60 Hz	12.6 %

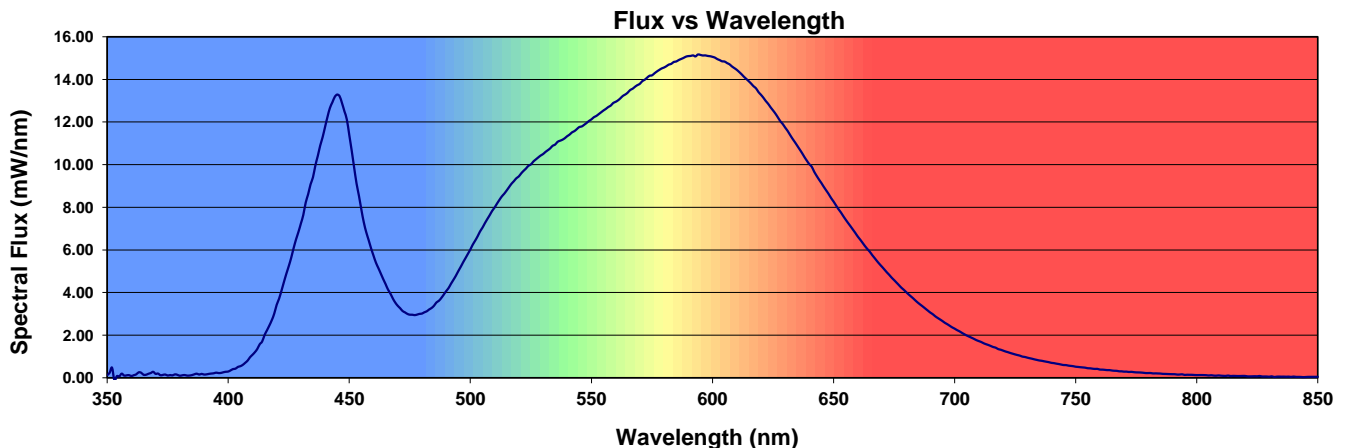
### Summary of Results

Total Output:	859 Lumens	Chromaticity (x):	0.3904
Efficacy:	60.9 lm/w	Chromaticity (y):	0.3795
CCT:	3756 K	Chromaticity (u'):	0.2306
CRI (Ra):	80.1	Chromaticity (v'):	0.5043
CRI (R9):	5.9	TM-30 Rf:	80
Peak Wavelength:	595 nm	TM-30 Rg:	99
Dominant Wavelength:	581 nm	TM-30 Rcs,h1:	-12%
S/P Ratio:	1.54	Duv:	-0.0015



### Color Rendering Index Detail

Ra (CRI)	R1	R2	R3	R4	R5	R6	R7	R8	R9	R10	R11	R12	R13	R14	R15
80.1	78.9	84.8	89.8	80.6	79.0	79.8	84.2	63.8	5.9	64.4	79.7	64.4	79.6	94.0	72.8



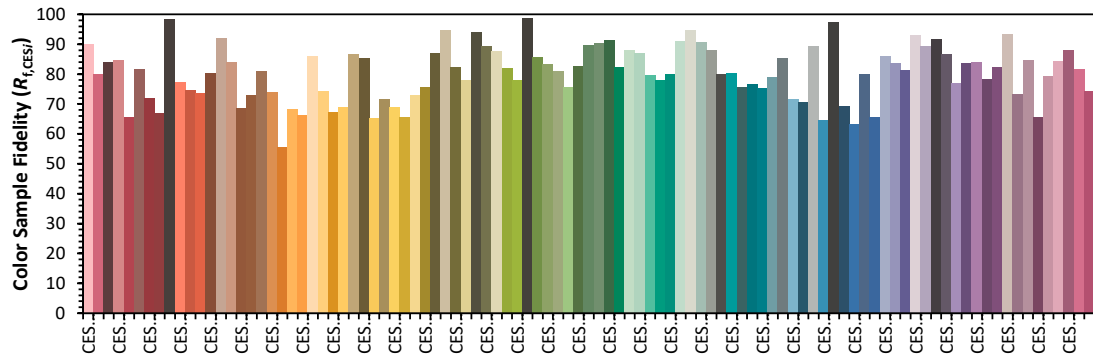
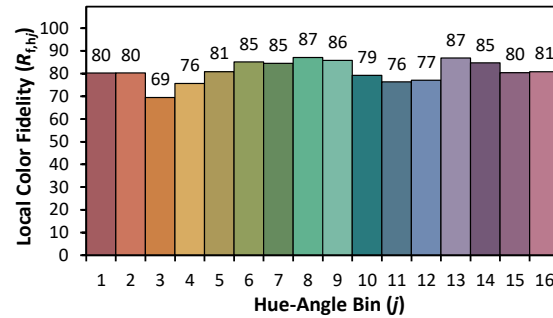
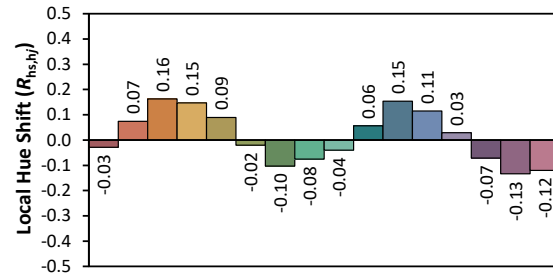
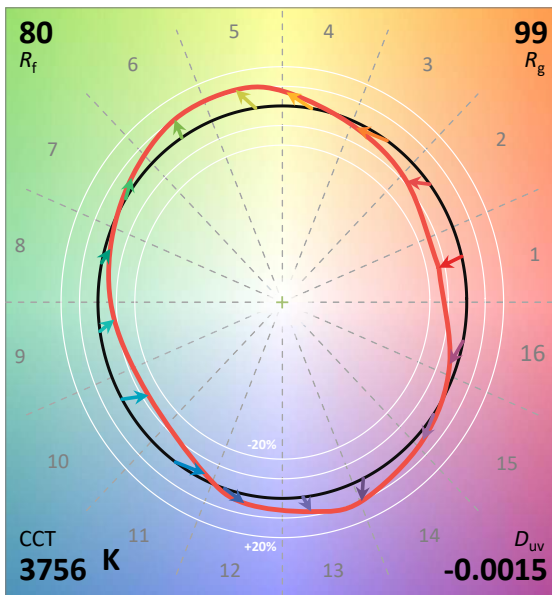
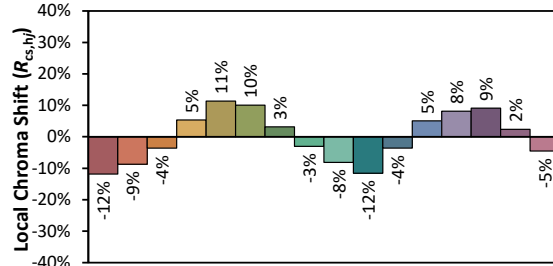
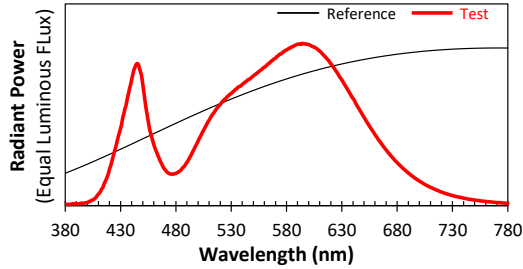
# ANSI/IES TM-30-18 Color Rendition Report

Source: Test Number: 13742921.12

Manufacturer: B-K Lighting INC

Date: 2021-04-30

Model: RI-LED-TR-E132-NSP-WHP-9-C-INC-MT-PROTO-(3500K)



Notes: This is a recommended method for displaying ANSI/IES TM-30-18 information.

x 0.3904  
y 0.3795  
u' 0.2306  
v' 0.5043

CIE 13.3-1995  
(CRI)

R<sub>a</sub> 80

R<sub>9</sub> 6

Colors are for visual orientation purposes only. Created with the IES TM-30-18 Calculator Version 2.00.