



INDEPENDENT TESTING LABORATORIES, INC.  
3386 LONGHORN ROAD, BOULDER, CO 80302 USA

PHONE: (303)442-1255 • FAX: (303)449-5274 • E-MAIL: itl@itlboulder.com • WEBSITE: www.itlboulder.com

REPORT NUMBER: ITL46487

DATE: 06/18/97

PREPARED FOR: B-K LIGHTING, INC.

CATALOG NUMBER: GL-2-XXX-E-2

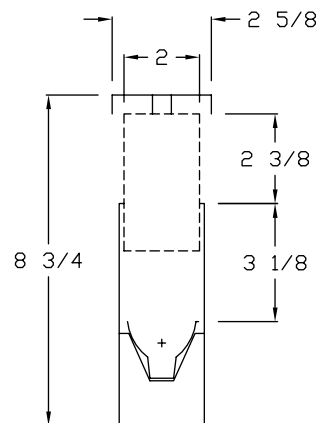
LUMINAIRE: MACHINED BRASS LAMP/SOCKET HOUSING, CYLINDRICAL METAL UPPER HOUSING, CLEAR PLASTIC CYLINDRICAL ENCLOSURE WITH WHITE PAINTED METAL CAP MOUNTED TO TOP.

LAMP: ONE 20-WATT MR-16 HALOGEN INCANDESCENT, EYE MR16-BAB-12V, VERTICAL BASE-DOWN POSITION.

NOTE: DATA SHOWN IS ABSOLUTE FOR SAMPLE PROVIDED, AT RATED INPUT VOLTAGE TO THE LAMP.

MOUNTING: BOLLARD

REPORT IS BASED ON 307 LUMENS PER LAMP



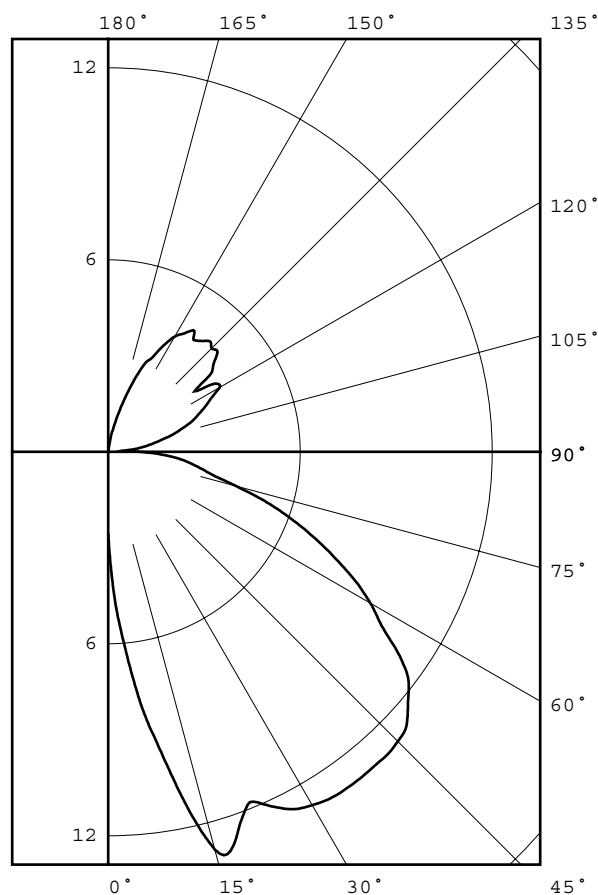
DEG	CANDELA	LUMENS
0	3	
5	6	1
15	13	3
25	12	6
35	13	8
45	13	10
55	11	10
65	8	8
75	4	4
85	2	2
90	1	
95	1	1
105	2	2
115	3	3
125	3	4
135	5	4
145	5	3
155	3	2
165	1	0
175	0	0
180	0	

ZONAL LUMEN SUMMARY			
ZONE	LUMENS	%LAMP	%FIXT
0- 30	10	3.2	14.0
0- 40	18	5.8	25.5
0- 60	38	12.3	53.5
0- 90	52	17.0	74.1
90-120	6	2.0	8.9
90-130	10	3.2	14.1
90-150	16	5.3	23.1
90-180	18	5.9	25.9
0-180	70	22.9	100.0

TOTAL LUMINAIRE EFFICIENCY = 22.9 %

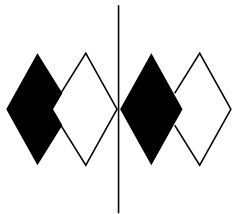
CIE TYPE - SEMI-DIRECT

LUMINAIRE SPACING CRITERION = 3.0



Checked EB

Approved R.P.BERGIN



**itl boulder**  
THE LIGHT CENTER OF THE INDUSTRY SINCE 1955

INDEPENDENT TESTING LABORATORIES, INC.  
3386 LONGHORN ROAD, BOULDER, CO 80302 USA

PHONE: (303)442-1255 • FAX: (303)449-5274 • E-MAIL: [itl@itlboulder.com](mailto:itl@itlboulder.com) • WEBSITE: [www.itlboulder.com](http://www.itlboulder.com)

REPORT NUMBER: ITL46487  
PREPARED FOR: B-K LIGHTING, INC.

DATE: 06/18/97

CANDELA DISTRIBUTION

	0.0
0.0	3
5.0	6
10.0	10
15.0	13
20.0	12
25.0	12
30.0	13
35.0	13
40.0	13
45.0	13
50.0	12
55.0	11
60.0	9
65.0	8
70.0	6
75.0	4
80.0	3
85.0	2
90.0	1
95.0	1
100.0	1
105.0	2
110.0	3
115.0	3
120.0	4
125.0	3
130.0	4
135.0	5
140.0	5
145.0	5
150.0	4
155.0	3
160.0	2
165.0	1
170.0	1
175.0	0
180.0	0

ZONAL LUMEN SUMMARY

0- 5	0.
5- 10	1.
10- 15	1.
15- 20	2.
20- 25	2.
25- 30	3.
30- 35	4.
35- 40	4.
40- 45	5.
45- 50	5.
50- 55	5.
55- 60	5.
60- 65	4.
65- 70	4.
70- 75	3.
75- 80	2.
80- 85	1.
85- 90	1.
90- 95	0.
95-100	1.
100-105	1.
105-110	1.
110-115	2.
115-120	2.
120-125	2.
125-130	2.
130-135	2.
135-140	2.
140-145	1.
145-150	1.
150-155	1.
155-160	1.
160-165	0.
165-170	0.
170-175	0.
175-180	0.



INDEPENDENT TESTING LABORATORIES, INC.  
3386 LONGHORN ROAD, BOULDER, CO 80302 USA

PHONE: (303)442-1255 • FAX: (303)449-5274 • E-MAIL: [itl@itlboulder.com](mailto:itl@itlboulder.com) • WEBSITE: [www.itlboulder.com](http://www.itlboulder.com)

REPORT NUMBER: ITL46487

DATE: 06/18/97

PREPARED FOR: B-K LIGHTING, INC.

# COEFFICIENTS OF UTILIZATION - ZONAL CAVITY METHOD

EFFECTIVE FLOOR CAVITY REFLECTANCE 0.20

RC	80				70				50			30			10			0
RW	70	50	30	10	70	50	30	10	50	30	10	50	30	10	50	30	10	0
0	26	26	26	26	25	25	25	25	22	22	22	20	20	20	18	18	18	17
1	24	22	21	20	22	21	20	19	19	18	18	17	17	16	15	15	15	14
2	21	19	18	16	20	18	17	16	16	15	14	15	14	13	13	12	12	11
3	19	17	15	13	18	16	14	13	14	13	12	13	12	11	11	11	10	9
4	17	15	13	11	16	14	12	11	13	11	10	11	10	9	10	9	8	7
5	16	13	11	9	15	12	10	9	11	9	8	10	9	8	9	8	7	6
6	15	11	9	8	14	11	9	8	10	8	7	9	8	6	8	7	6	5
7	13	10	8	7	13	10	8	7	9	7	6	8	7	6	7	6	5	5
8	12	9	7	6	12	9	7	6	8	6	5	7	6	5	7	5	5	4
9	12	8	7	5	11	8	6	5	7	6	5	7	5	4	6	5	4	4
10	11	8	6	5	10	7	6	4	7	5	4	6	5	4	6	4	4	3

ALL CANDELA, LUMENS, LUMINANCE, COEFFICIENT OF UTILIZATION AND VCP VALUES IN THIS REPORT ARE BASED ON RELATIVE PHOTOMETRY WHICH ASSUMES A BALLAST FACTOR OF 1.000. ANY CALCULATIONS PREPARED FROM THESE DATA SHOULD INCLUDE AN APPROPRIATE BALLAST FACTOR.