

itl boulder
THE LIGHT CENTER OF THE INDUSTRY SINCE 1955



INDEPENDENT TESTING LABORATORIES, INC.
4066 CAMELOT CIRCLE, LONGMONT, CO 80504 USA

PHONE: (303) 442-1255 • FAX: (970) 535-3114 • E-MAIL: itl@itlboulder.com • WEBSITE: www.itlboulder.com

REPORT NUMBER: ITL86266
DATE: 01/14/16
PREPARED FOR: B-K Lighting, Inc.
LUMINAIRE CAT NO: MD-LED-e70-1

Page 1 of 4

ADDRESS: 40429 Brickyard Drive
Madera, CA 93636-9515

LUMINAIRE: Cylindrical plastic housing with cast black painted metal trim.
One LED module consisting of: Machined cylindrical metal housing,
machined metal circuit board mounting base, 1 black circuit board
with 1 LED, clear plastic optic above LED with recessed top
center, clear frosted glass lens in cast black painted metal
faceplate with 1 aperture, lens frosted side in.

LAMPS: One white light emitting diode (LED), vertical base-down
position.

LED DRIVER: B-K Lighting 518801/400187-F

OBJECT OF TEST: Measure temperature of hottest single LED in the luminaire for
correlation to the LED manufacturer's lumen depreciation curves.
Also measure the hot spot on the LED driver. B-K Lighting, Inc.
provided direction as to where to place the thermocouple on the
LED and the LED driver. Type K thermocouples were utilized for
all thermal measurements.

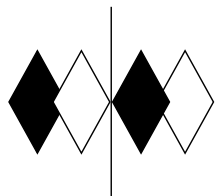
INSTRUMENTATION:	Calibration Due
APT 6040 AC Power Source	NA
Acme Electric T-1-81052 Transformer	NA
Yokogawa WT210 Power Analyzer	11/30/16
Omega HH66R Digital Thermometer	09/02/16

PROCEDURE: In Situ Temperature Measurement Test on in-grade luminaire. The
luminaire was suspended vertical base-down in free air for this
test. After mounting, the luminaire was energized at 12VAC 60Hz
input to the LED driver and allowed to stabilize in a 25 +/-1
degree Celsius free air ambient. Once stabilization was verified
the LED, driver, and ambient temperatures were recorded.

RESULTS: Refer to following pages

Checked: N. White

Approved: C. Stout



itl boulder
THE LIGHT CENTER OF THE INDUSTRY SINCE 1955



INDEPENDENT TESTING LABORATORIES, INC.
4066 CAMELOT CIRCLE, LONGMONT, CO 80504 USA

PHONE: (303) 442-1255 • FAX: (970) 535-3114 • E-MAIL: itl@itlboulder.com • WEBSITE: www.itlboulder.com

REPORT NUMBER: ITL86266
DATE: 01/14/16
PREPARED FOR: B-K Lighting, Inc.
LUMINAIRE CAT NO: MD-LED-e70-1

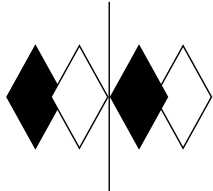
Page 2 of 4

RESULTS: Performance Data

Thermocouple Location		Temperature in Degrees C	Temperatures Corrected to Reflect a 25°C Ambient
T _A	(ambient)	25.9	25.0
T _{LD}	(LED)	65.8	64.9
T _{DR}	(driver)	61.4	60.5

Luminaire Input Electrical

Input Voltage (Volts AC): 12.0
Input Current (Amps AC): 0.345
Input Power (Watts AC): 2.67



itl boulder
THE LIGHT CENTER OF THE INDUSTRY SINCE 1955

NVLAP
NVLAP LAB CODE: 200925-0

INDEPENDENT TESTING LABORATORIES, INC.
4066 CAMELOT CIRCLE, LONGMONT, CO 80504 USA

PHONE: (303) 442-1255 • FAX: (970) 535-3114 • E-MAIL: itl@itlboulder.com • WEBSITE: www.itlboulder.com

REPORT NUMBER: ITL86266
DATE: 01/14/16
PREPARED FOR: B-K Lighting, Inc.
LUMINAIRE CAT NO: MD-LED-e70-1

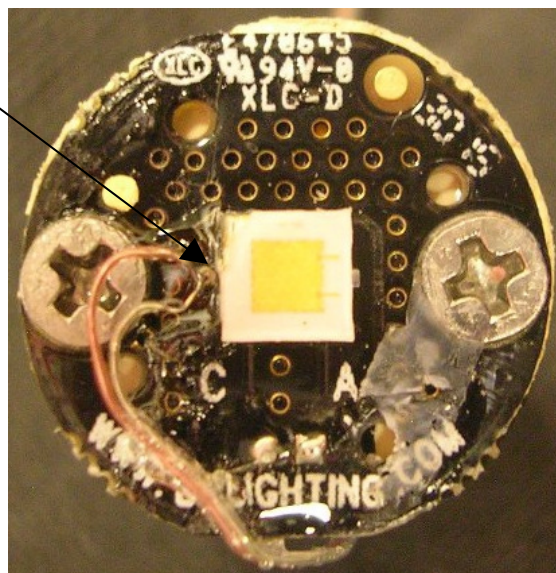
Page 3 of 4

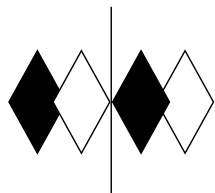
RESULTS: Photographs

LUMINAIRE WITH LENS



LED





itl boulder
THE LIGHT CENTER OF THE INDUSTRY SINCE 1955

PHONE: (303) 442-1255

FAX: (970) 535-3114

E-MAIL: itl@itlboulder.com

WEBSITE: www.itlboulder.com



INDEPENDENT TESTING LABORATORIES, INC.

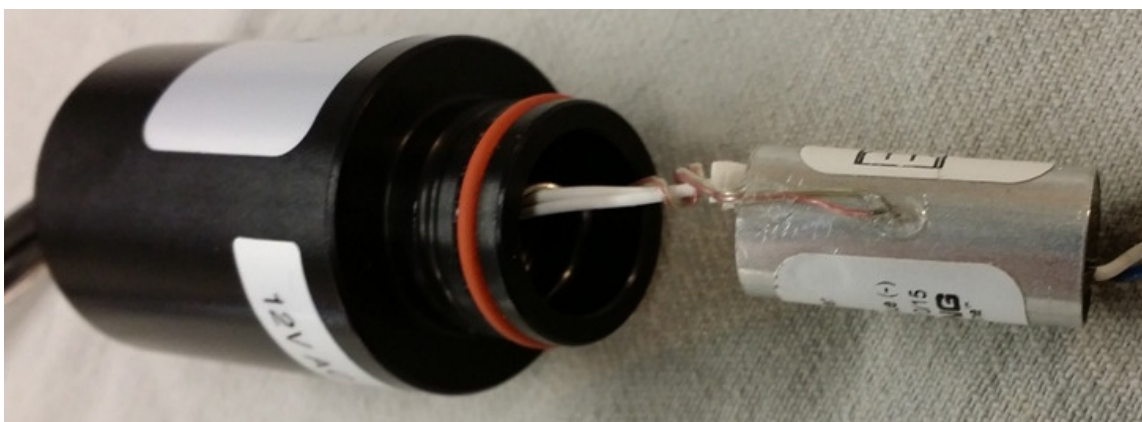
4066 CAMELOT CIRCLE, LONGMONT, CO 80504 USA

REPORT NUMBER: ITL86266
DATE: 01/14/16
PREPARED FOR: B-K Lighting, Inc.
LUMINAIRE CAT NO: MD-LED-e70-1

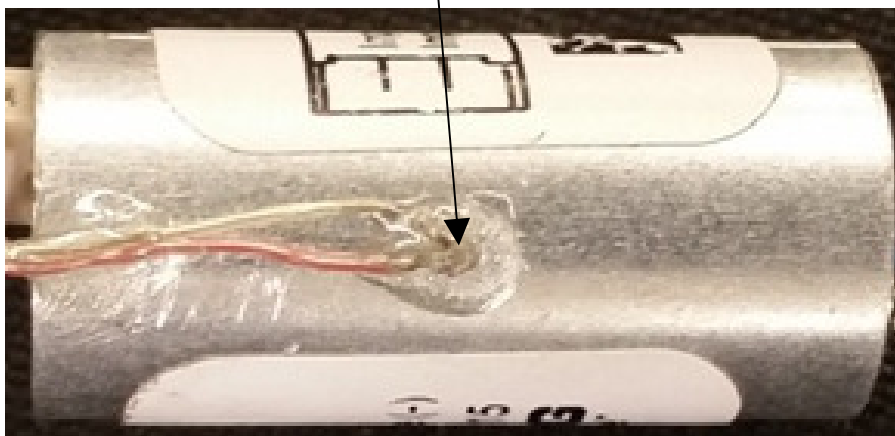
Page 4 of 4

RESULTS: Photographs (continued)

DRIVER LOCATION



DRIVER



THIS ITL REPORT WITH THE USE OF THE NVLAP LOGO SHALL NOT BE USED BY THE CLIENT TO CLAIM PRODUCT CERTIFICATION, APPROVAL, OR ENDORSEMENT BY NVLAP, NIST, OR ANY AGENCY OF THE FEDERAL GOVERNMENT.