



UL LLC
1075 W Lambert Rd Suite B
Brea, CA 92821

Integrating Sphere Test Report

Relevant Standards
IES LM-79-2008, ANSI C82.77-10-2014, CIE 13.3-1995
CIE 15-2004, ANSI C78.377-2017, IES TM-30-2018

Prepared For
B-K Lighting INC

Daniel Carrejo
40429 Brickyard Dr.
Madera, CA 93636
United States

Catalog Number
DE-LED-TR-X124-SP-9-C-PROTOTYPE(3500K)

Order Number
13583921
Test Number
13583921.03

Test Date

2021-02-04

Prepared By

Austin Duff, Technician

Approved By

Eric Gaudreau, Engineering Leader

The results contained in this report pertain only to the tested sample.
This report shall not be reproduced, except in full, without written approval of Underwriters Laboratories.
This report must not be used by the client to claim product certification, approval, or endorsement by
NVLAP, NIST, or any agency of the Federal Government.



Luminaire Description: White metal cylindrical housing and clear glass lens
Lamp: One (1) White LED
Mounting: Pendant
Ballast/Driver: One (1) ERP EBR020U-0700-30

Luminaire



Summary of Results

Radiant Flux:	3458 mW
Luminous Flux:	1124 lm
Luminaire Efficacy:	49.8 lm/W
CCT:	3714 K
CRI (Ra):	81.8
Chromaticity (x):	0.3916
Chromaticity (y):	0.3780
Chromaticity (u):	0.2320
Chromaticity (v):	0.3359
Duv:	-0.0030

Test Conditions

Test Temperature:	25.4 °C
Voltage:	120.1 VAC
Current:	0.1903 A
Power:	22.55 W
Power Factor:	0.987
Frequency:	60 Hz
Current THD:	15.0 %

Testing was performed in a 2-meter integrating sphere using the 4 π geometry method.
Absorption correction was employed for this measurement.



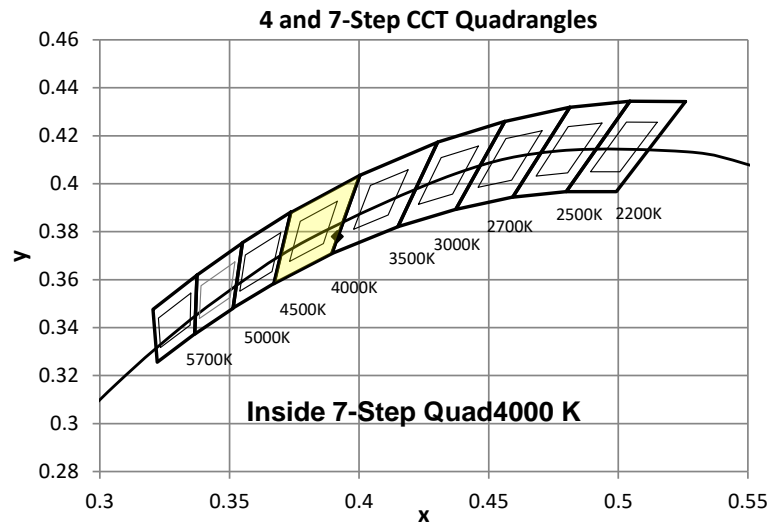
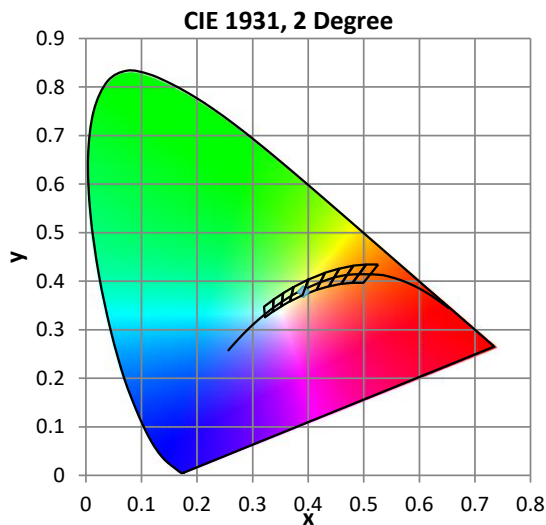
Color Quality - Integrating Sphere

Integrating Sphere Test Conditions

Temperature	Voltage	Current	Power	Power Factor	Frequency	Current THD
25.4 °C	120.1 VAC	0.1903 A	22.55 W	0.987	60 Hz	15.0 %

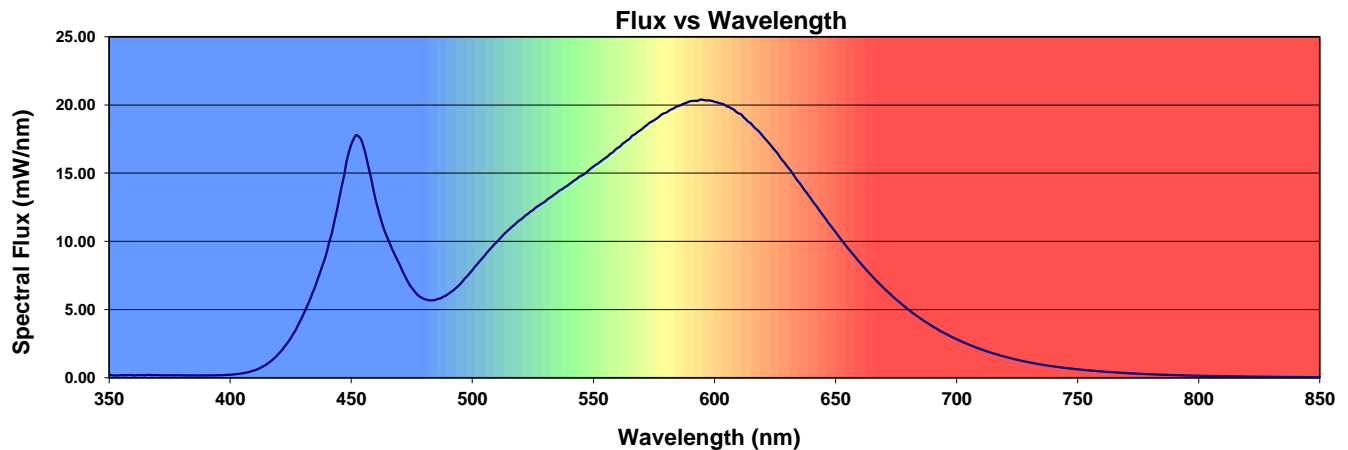
Summary of Results

Total Output:	1124 Lumens	Chromaticity (x):	0.3916
Efficacy:	49.8 lm/w	Chromaticity (y):	0.3780
CCT:	3714 K	Chromaticity (u'):	0.2320
CRI (Ra):	81.8	Chromaticity (v'):	0.5038
CRI (R9):	5.9	TM-30 Rf:	83
Peak Wavelength:	595 nm	TM-30 Rg:	96
Dominant Wavelength:	581 nm	TM-30 Rcs,h1:	-12%
S/P Ratio:	1.59	Duv:	-0.0025



Color Rendering Index Detail

Ra (CRI)	R1	R2	R3	R4	R5	R6	R7	R8	R9	R10	R11	R12	R13	R14	R15
81.8	80.1	89.2	94.7	79.4	80.1	84.6	84.2	61.9	5.9	73.7	77.0	65.3	82.3	97.2	74.5



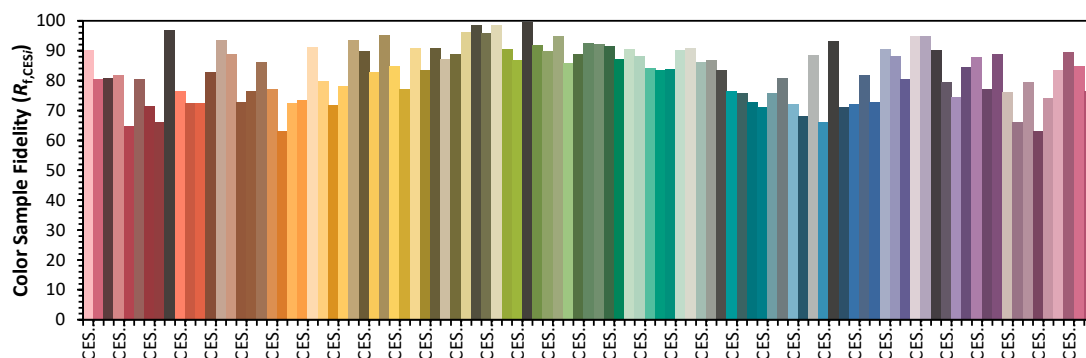
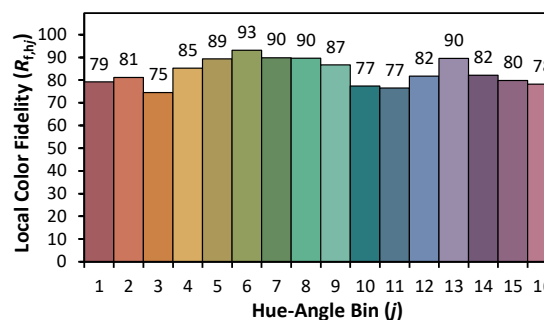
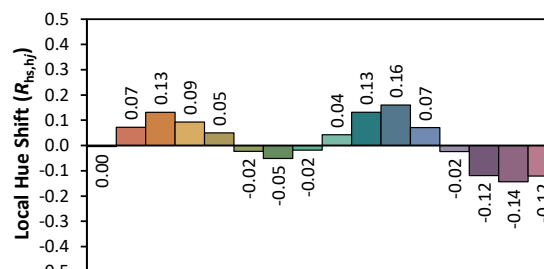
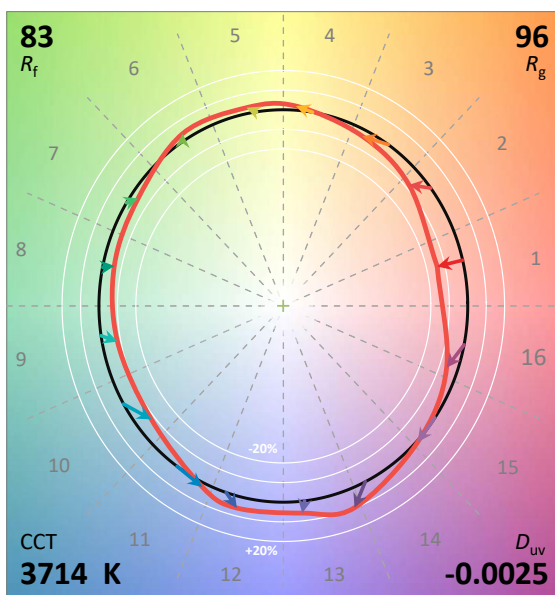
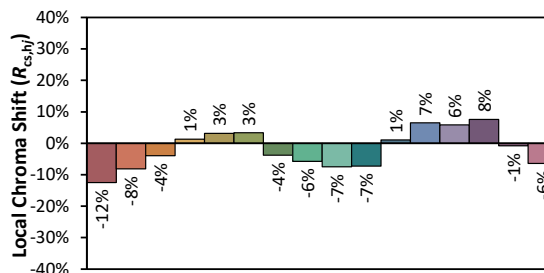
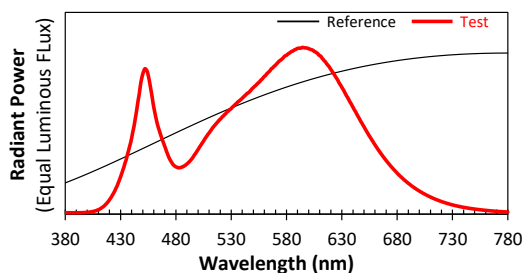
ANSI/IES TM-30-18 Color Rendition Report

Source: Test Number: 13583921.03

Manufacturer: B-K Lighting INC

Date: 2021-02-04

Model: DE-LED-TR-X124-SP-9-C-PROTOTYPE



Notes: This is a recommended method for displaying ANSI/IES TM-30-18 information.

x 0.3916
y 0.3780
u' 0.2320
v' 0.5038

CIE 13.3-1995
(CRI)

R_a 82
R_g 6

Colors are for visual orientation purposes only. Created with the IES TM-30-18 Calculator Version 2.00.