

ALPINE - Wall Mount - Line Voltage - Lamp PAR38 - Single - Downlight or Uplight

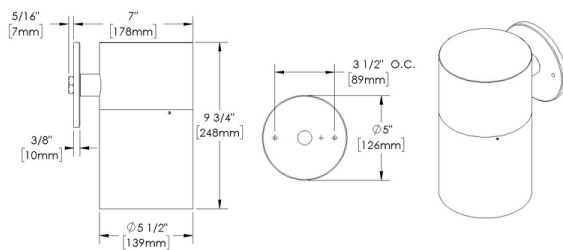


IP66

Downloads

- Product Images (.zip)
- Technical Drawing (.zip)
- 2D (.dwg)
- 2D (.dxf)
- IES Files (.zip)
- BIM - Revit (.zip)
- Installation Instructions (.pdf)

Product Variant Examples



ALPINE - Wall Mount - Line Voltage - Lamp PAR38 - Single - Downlight or Uplight

Available Logic & Configurations

AP- **WM-** **LID-** **LAP38-** **AL-** **BC-** **CC-** **DS-**
 01 02 03 04 05 06B 06C 06D

01 SERIES

AP - ALPINE

02 CATEGORY

WM - Wall Mount

03 DRIVER

LID - Line Voltage

04 LIGHT SOURCE (TYPE)

LAP38 - Lamp PAR38

- **-** **-** **WL00-** **-**
 07 10A 10B 11 12

07 LIGHT SOURCE

00 - Not included

530 - 2700K CRI80 - 15.5W - 15°

531 - 2700K CRI80 - 15.5W - 25°

532 - 2700K CRI80 - 15.5W - 40°

533 - 3000K CRI80 - 15.5W - 15°

534 - 3000K CRI80 - 15.5W - 25°

535 - 3000K CRI80 - 15.5W - 40°

536 - 4000K CRI80 - 15.5W - 40°

05 MATERIAL

AL - Aluminum

06B MOUNT

BC - Canopy

06C STYLE

CC - Cap C - Flush Lens

06D VERSION

DS - Single - Downlight or Uplight

10A LENS

09 - Clear (Standard)

12 - Soft Focus

13 - Rectilinear

10B SHIELDING

00 - Not included (Standard)

11 - Honeycomb Baffle

11 WIRING LENGTH

WL00 - Standard

12 FINISH

Standard Finishes

BLP, BZP, WHP, SAP, BLW, BZW, WHW, VER

Premium Finishes

CMG, SMG, RMG, AMG, TXF, BCM, BGE, WCP, OCP, HUG, ABP, BPP, SDS,

WIR, CAP, CRM, AQW, NBP

Other - RAL

RAL

Other - Custom Color

CUS

NOTE: Not all configurations may be compatible with one another. Please configure the product for specific 2D, Photometry, Downloads, Spec Sheet and Compatible mountings and power supplies.

ALPINE - Wall Mount - Line Voltage - Lamp PAR38 - Single - Downlight or Uplight

Features



Anti-condensation vent allows moisture to exit the fixture but never enter in



Lens factory adhered to fixture cap providing hermetically sealed optical compartment



Machined solid billet canopy provides unmatched strength and durability



Manufactured in the USA with sustainable processes



Water-tight anti-siphon plug prevents moisture ingress from wireways



Secured with tamper-resistant, stainless steel hardware



Easily replaceable modular components reduce waste and extend fixture life



Slip fit cap & high temp. silicone 'O' ring provides reliable water-tight seal



Solid billet fixture body provides unmatched durability and heat management

Technical

Driver: Line Voltage

Light Source (Type): Lamp PAR38

Material: Aluminum

CCT (K): 2700, 3000, 4000

CRI: 95

Delivered Lumens (lm): 1320 - 1420

Beam Angle (°): 15, 25, 40

Mount: Canopy

Style: Cap C - Flush Lens

Version: Single - Downlight or Uplight

Lens: Soft Focus, Clear (Standard), Rectilinear

Shielding: Not included (Standard), Honeycomb Baffle

Wiring Length: Standard

Finish: Standard Finishes, Premium Finishes, Other - RAL, Other - Custom Color

Body: Unibody design, with enclosed, water-proof wireway and integral heat sink, fully machined from solid billet., Cast canopy.

Material Detail: Furnished in copper-free aluminum (6061-T6).

Light Source Detail: 11W PAR30 Green Creative LED lamp, Title 20 compliant. Halogen sourced by others. For use with 120V. No transformer required.

Hardware: Tamper-resistant, stainless steel hardware. Hardware is black oxide treated for additional corrosion resistance.

Sealing: 'O' Ring provides water-tight seal.

Finish Detail: StarGuard, our 15-stage chromate-free process, cleans and conversion coats aluminum components prior to application of Class 'A' TGIC polyester powder coating. It is RoHS compliant.

Warranty: 5-year limited warranty.

ALPINE - Wall Mount - Line Voltage - Lamp PAR38 - Single - Downlight or Uplight

Finishes

STANDARD FINISHES



PREMIUM FINISHES



OTHER - RAL



OTHER - CUSTOM COLOR



ALPINE - Wall Mount - Line Voltage - Lamp PAR38 - Single - Downlight or Uplight

Light Source

Light Source	Optic	Beam Angle	CCT (K)	CRI	R9	Input Power (W)	Delivered Lumens (Lm)	CBCP
530	SP - Spot	15	2700	95	>50	15.5	1320	14000
531	NFL - Narrow Flood	25	2700	95	>50	15.5	1320	6750
532	FL - Flood	40	2700	95	>50	15.5	1320	2800
533	SP - Spot	15	3000	95	>50	15.5	1370	14700
534	NFL - Narrow Flood	25	3000	95	>50	15.5	1370	7000
535	FL - Flood	40	3000	95	>50	11.5	1370	2900
536	FL - Flood	40	4000	95	>50	15.5	1420	3000