

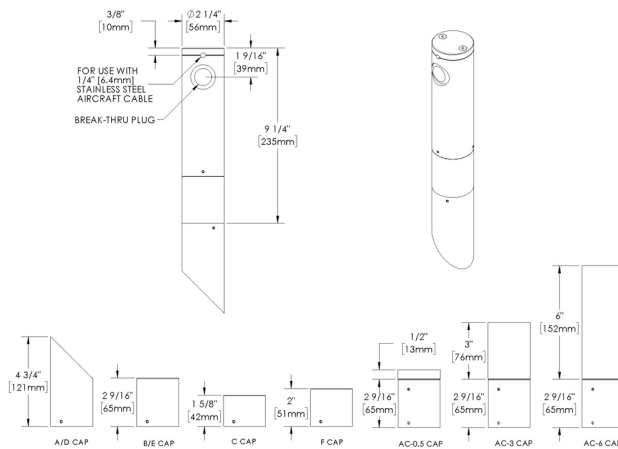
ARTI STAR - Catenary - Line Voltage - LED COB



Downloads

- Product Images (.zip)
- Technical Drawing (.zip)
- 2D (.dwg)
- 2D (.dxf)
- IES Files (.zip)
- BIM - Revit (.zip)
- Installation Instructions (.pdf)

Product Variant Examples



AMERICAN MADE + EMPLOYEE OWNED | 40429 Brickyard Drive, Madera, CA 93636 | +1 (559) 438-5800 | info@bklighting.com | bklighting.com

Copyright © B-K Lighting, Inc. This document contains proprietary information of B-K Lighting, inc. and its receipt or possession does not convey any rights to reproduce, disclose its contents, or to manufacture, use or sell anything it may describe.

Technical information is subject to change at the discretion of B-K Lighting Inc. For the most current technical data, please refer to bklighting.com

ARTI STAR - Catenary - Line Voltage - LED COB

Available Logic & Configurations

AR- 01 **CA-** 02 **LID-** 03 **LCB-** 04 **-** 05 **-** 06C

01 SERIES

AR - ARTI STAR

02 CATEGORY

CA - Catenary

03 DRIVER

LID - Line Voltage

04 LIGHT SOURCE (TYPE)

LCB - LED COB

05 MATERIAL

AL - Aluminum

BR - Brass

SS - Stainless Steel

06C STYLE

CC - Cap C - Flush Lens

CD - Cap D - 45°

CE - Cap E - 90°

CE-AC-0.5 - Cap E with Acrylic 0.5" - 90°, Frosted Acrylic Tube

CE-AC-3 - Cap E with Acrylic 3" - 90°, Frosted Acrylic Tube

CE-AC-6 - Cap E with Acrylic 6" - 90°, Frosted Acrylic Tube

CF - Cap F - Extended Flush Lens

- 07 **-** 08 **-** 09 **-** 10A **-** 10B **WL00-** 11 **-** 12 **-** 13

07 LIGHT SOURCE

x52 - 2700K CRI80 - 10W (640 - 762 lm)

x53 - 3000K CRI80 - 10W (690 - 822 lm)

x54 - 4000K CRI80 - 10W (734 - 874 lm)

x55 - 2700K CRI90 - 10W

x56 - 3000K CRI90 - 10W

x57 - 3500K CRI80 - 10W

08 OPTIC

SP - Spot (20°)

FL - Flood (40°)

WFL - Wide Flood (60°)

09 CONTROL

ELV - ELV Dimming (For use with Electronic Low Voltage Dimmer. 120V only.)

INC - INC Dimming (For use with Incandescent Dimmer. 120V only.)

10A LENS

09 - Clear (Standard)

12 - Soft Focus

13 - Rectilinear

10B SHIELDING

00 - Not included (Standard)

11 - Honeycomb Baffle

11 WIRING LENGTH

WL00 - Standard

12 FINISH

Standard Finishes

BLP, BZP, WHP, SAP, BLW, BZW, WHW, VER

Premium Finishes

CMG, SMG, RMG, AMG, TXF, BCM, BGE, WCP, OCP, HUG, ABP, BPP, SDS,

WIR, CAP, CRM, AQW, NBP

Other - RAL

RAL

Other - Custom Color

CUS

Brass Finishes

MAB, POB, MIT

Stainless Steel Finishes

MAS, POS

13 OPTION

WC-AR - Internal Secondary Wire Clamp - Arti Star

NOTE: Not all configurations may be compatible with one another. Please configure the product for specific 2D, Photometry, Downloads, Spec Sheet and Compatible mountings and power supplies.

ARTI STAR - Catenary - Line Voltage - LED COB

Features



Anti-condensation vent allows moisture to exit the fixture but never enter in



Water-tight break-thru plug allows cable to run through fixture body while keeping moisture out



Lens factory adhered to fixture cap providing hermetically sealed optical compartment



Manufactured in the USA with sustainable processes



Secured with tamper-resistant, stainless steel hardware



Easily replaceable modular components reduce waste and extend fixture life



Slip fit cap & high temp. silicone 'O' ring provides reliable water-tight seal



Solid billet fixture body provides unmatched durability and heat management

Technical

Driver: Line Voltage

Light Source (Type): LED COB

Material: Aluminum, Brass, Stainless Steel

CCT (K): 2700, 3000, 3500, 4000

CRI: 80, 90

Input Power (W): 10

Delivered Lumens (lm): 640 - 874

Beam Angle (°): 20, 40, 60

Control: ELV Dimming (For use with Electronic Low Voltage Dimmer. 120V only.), INC Dimming (For use with Incandescent Dimmer. 120V only.)

Style: Cap C - Flush Lens, Cap D - 45°, Cap E - 90°, Cap F - Extended Flush Lens, Cap E with Acrylic 0.5" - 90°, Frosted Acrylic Tube, Cap E with Acrylic 3" - 90°, Frosted Acrylic Tube, Cap E with Acrylic 6" - 90°, Frosted Acrylic Tube

Lens: Soft Focus, Clear (Standard), Rectilinear

Shielding: Not included (Standard), Honeycomb Baffle

Wiring Length: Standard

Finish: Standard Finishes, Premium Finishes, Other - RAL, Other - Custom Color, Brass Finishes, Stainless Steel Finishes

Option: Internal Secondary Wire Clamp - Arti Star

Body: Unibody design with enclosed, water-proof wireway, integral heat sink, fully machined from solid billet, anti-condensation and corrosion vent equalizes fixture pressure and eliminates potential for damage to internal components.

Material Detail: Furnished in stainless steel (304), Furnished in brass (360), Furnished in copper-free aluminum (6061-T6).

Light Source Detail: COB (Chip on Board) technology and modular design with electrical quick disconnects.

Optics: Interchangeable optics permit changes in the field.

Hardware: Tamper-resistant, stainless steel hardware.

Sealing: 'O' Ring provides water-tight seal., Anti-condensation and corrosion vent equalizes fixture pressure and eliminates potential for damage to internal components.

Finish Detail: Powder coat or metal finish options available for brass material., Metal finish option only for stainless steel material., StarGuard, our 15-stage chromate-free process, cleans and conversion coats aluminum components prior to application of Class 'A' TGIC polyester powder coating. It is RoHS compliant.

Warranty: 5-year limited warranty.

ARTI STAR - Catenary - Line Voltage - LED COB

Finishes

STANDARD FINISHES



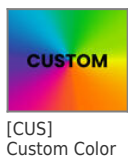
PREMIUM FINISHES



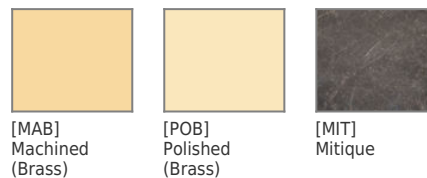
OTHER - RAL



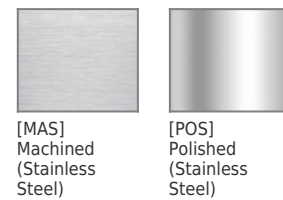
OTHER - CUSTOM COLOR



BRASS FINISHES



STAINLESS STEEL FINISHES



ARTI STAR - Catenary - Line Voltage - LED COB

Light Source

Light Source	Optic	Beam Angle	CCT (K)	CRI	R9	Input Power (W)	Delivered Lumens (Lm)	CBCP
x52	SP - Spot	20	2700	80	>15	10	762	2337
x52	FL - Flood	40	2700	80	>15	10	757	1521
x52	WFL - Wide Flood	60	2700	80	>15	10	640	559
x53	SP - Spot	20	3000	80	>15	10	822	2521
x53	FL - Flood	40	3000	80	>15	10	817	1640
x53	WFL - Wide Flood	60	3000	80	>15	10	690	603
x54	SP - Spot	20	4000	80	>15	10	874	2680
x54	FL - Flood	40	4000	80	>15	10	869	1744
x54	WFL - Wide Flood	60	4000	80	>15	10	734	641
x55	FL - Flood	60	2700	90	>50	10		
x55	SP - Spot	60	2700	90	>50	10		
x55	WFL - Wide Flood	60	2700	90	>50	10		
x56	FL - Flood	60	3000	90	>50	10		
x56	SP - Spot	60	3000	90	>50	10		
x56	WFL - Wide Flood	60	3000	90	>50	10		
x57	FL - Flood	60	3500	90	>50	10		
x57	SP - Spot	60	3500	90	>50	10		
x57	WFL - Wide Flood	60	3500	90	>50	10		