



# DENALI - Floodlight - Remote Driver - LED Color Tuning

## Available Logic & Configurations

**DE-** **FL-** **RMD-** **LCT-** **AL-** **TKM-** **-**  
 01 02 03 04 05 06B 06C

**01 SERIES**

**DE** - DENALI

**02 CATEGORY**

**FL** - Floodlight

**03 DRIVER**

**RMD** - Remote Driver

**04 LIGHT SOURCE (TYPE)**

**LCT** - LED Color Tuning

**05 MATERIAL**

**AL** - Aluminum

**06B MOUNT**

**TKM** - Threaded Knuckle Mount

**06C STYLE**

**CA** - Cap A - 45° (With Weephole)

**CB** - Cap B - 90° (With Weephole)

**CC** - Cap C - Flush Lens

**CD** - Cap D - 45°

**CE** - Cap E - 90°

**C22-** **-** **-** **-** **WL00-** **-**  
 07 08 10A 10B 11 12

**07 LIGHT SOURCE**

**C22** - 1600-4000K + Saturation and Hue CRI90 - 20W (648.6 - 782.8 lm)

**08 OPTIC**

**SP** - Spot (20°)

**FL** - Flood (40°)

**WFL** - Wide Flood (60°)

**10A LENS**

**09** - Clear (Standard)

**12** - Soft Focus

**13** - Rectilinear

**10B SHIELDING**

**00** - Not included (Standard)

**11** - Honeycomb Baffle

**11 WIRING LENGTH**

**WL00** - Standard

**12 FINISH**

Standard Finishes

**BLP, BZP, WHP, SAP, BLW, BZW, WHW, VER**

Premium Finishes

**CMG, SMG, RMG, AMG, TXF, BCM, BGE, WCP, OCP, HUG, ABP, BPP, SDS,**

**WIR, CAP, CRM, AQW, NBP**

Other - RAL

**RAL**

Other - Custom Color

**CUS**

**NOTE:** Not all configurations may be compatible with one another. Please configure the product for specific 2D, Photometry, Downloads, Spec Sheet and Compatible mountings and power supplies.

**WARNING: This is a remote driver product. Please check "Mountings With A Power Supply" or "Power Supplies" to order remote driver separately. (IMPORTANT: Driver wattage MUST match selected fixture wattage. Example: 12W Light Source = 12W Driver)**

# DENALI - Floodlight - Remote Driver - LED Color Tuning

## Features



Anti-condensation vent allows moisture to exit the fixture but never enter in



Lens factory adhered to fixture cap providing hermetically sealed optical compartment



Manufactured in the USA with sustainable processes



Aim & Lock knuckle eliminates need for re-aiming & adjustments



Water-tight anti-siphon plug prevents moisture ingress from wireways



Secured with tamper-resistant, stainless steel hardware



Easily replaceable modular components reduce waste and extend fixture life



Slip fit cap & high temp. silicone 'O' ring provides reliable water-tight seal



Solid billet fixture body provides unmatched durability and heat management



360HD knuckle provides 360° horizontal rotation and vertical adjustment

## Technical

**Driver:** Remote Driver

**Light Source (Type):** LED Color Tuning

**Material:** Aluminum

**CCT (K):** 1600 - 4000

**CRI:** 90

**Input Power (W):** 20

**Delivered Lumens (lm):** 648.6 - 782.8

**Beam Angle (°):** 20, 40, 60

**Mount:** Threaded Knuckle Mount

**Style:** Cap A - 45° (With Weephole), Cap B - 90° (With Weephole), Cap C - Flush Lens, Cap D - 45°, Cap E - 90°

**Lens:** Soft Focus, Clear (Standard), Rectilinear

**Shielding:** Not included (Standard), Honeycomb Baffle

**Wiring Length:** Standard

**Finish:** Standard Finishes, Premium Finishes, Other - RAL, Other - Custom Color

**Body:** Unibody design with enclosed, water-proof wireway, integral heat sink, fully machined from solid billet, anti-condensation and corrosion vent equalizes fixture pressure and eliminates potential for damage to internal components.

**Material Detail:** Furnished in copper-free aluminum (6061-T6).

**Aiming:** 360HD Mounting System can adjust 180° vertically and rotate 360° horizontally. 'O' Ring helps maintain fixture position. Design withstands 73 lb. static load prior to movement for optical alignment with a 1/2" pipe thread for mounting.

**Light Source Detail:** LED Color Tuning

**Optics:** Interchangeable optics permit changes in the field.

**Hardware:** Tamper-resistant, stainless steel hardware. Hardware is black oxide treated for additional corrosion resistance.

**Sealing:** 'O' Ring provides water-tight seal., Anti-condensation and corrosion vent equalizes fixture pressure and eliminates potential for damage to internal components.

**Finish Detail:** StarGuard, our 15-stage chromate-free process, cleans and conversion coats aluminum components prior to application of Class 'A' TGIC polyester powder coating. It is RoHS compliant.

**Warranty:** 5-year limited warranty.

**WARNING: This is a remote driver product. Please check "Mountings With A Power Supply" or "Power Supplies" to order remote driver separately. (IMPORTANT: Driver wattage MUST match selected fixture wattage. Example: 12W Light Source = 12W Driver)**

# DENALI - Floodlight - Remote Driver - LED Color Tuning

## Finishes

### STANDARD FINISHES



[BLP]  
Satin Black



[BZP]  
Satin Bronze



[WHP]  
Satin White



[SAP]  
Satin Aluminum



[BLW]  
Black Wrinkle



[BZW]  
Bronze Wrinkle



[WHW]  
White Wrinkle



[VER]  
Verde

### PREMIUM FINISHES



[CMG]  
Cascade Mountain Granite



[SMG]  
Sierra Mountain Granite



[RMG]  
Rocky Mountain Granite



[AMG]  
Aleutian Mountain Granite



[TXF]  
Textured Forest



[BCM]  
Black Chrome



[BGE]  
Beige



[WCP]  
Weathered Copper



[OCP]  
Old Copper



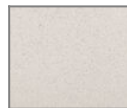
[HUG]  
Hunter Green



[ABP]  
Antique Brass Powder



[BPP]  
Brown Patina Powder



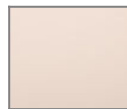
[SDS]  
Sonoran Desert Sandstone



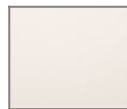
[WIR]  
Weathered Iron



[CAP]  
Clear Anodized Powder



[CRM]  
Cream



[AQW]  
Antique White



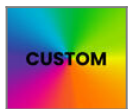
[NBP]  
Natural Brass Powder

### OTHER - RAL



[RAL]  
RAL Color

### OTHER - CUSTOM COLOR



[CUS]  
Custom Color

# DENALI - Floodlight - Remote Driver - LED Color Tuning

## Light Source

Light Source	Optic	Beam Angle	CCT (K)	CRI	R9	Input Power (W)	Delivered Lumens (Lm)	CBCP
C22	SP - Spot	20	1600 - 4000	90	>50	20	694	2657.1
C22	SP - Spot	20	1600 - 4000	90	>50	20	655.1	2508.1
C22	SP - Spot	20	1600 - 4000	90	>50	20	648.6	2483.3
C22	FL - Flood	40	1600 - 4000	90	>50	20	782.8	1515
C22	FL - Flood	40	1600 - 4000	90	>50	20	738.9	1430.1
C22	FL - Flood	40	1600 - 4000	90	>50	20	731.6	1415.9
C22	WFL - Wide Flood	60	1600 - 4000	90	>50	20	722.7	1055.8
C22	WFL - Wide Flood	60	1600 - 4000	90	>50	20	682.2	986.8
C22	WFL - Wide Flood	60	1600 - 4000	90	>50	20	673	977