

DEMI - Ceiling Mount - Line Voltage - LED High-Power - Stem Mount

NEW



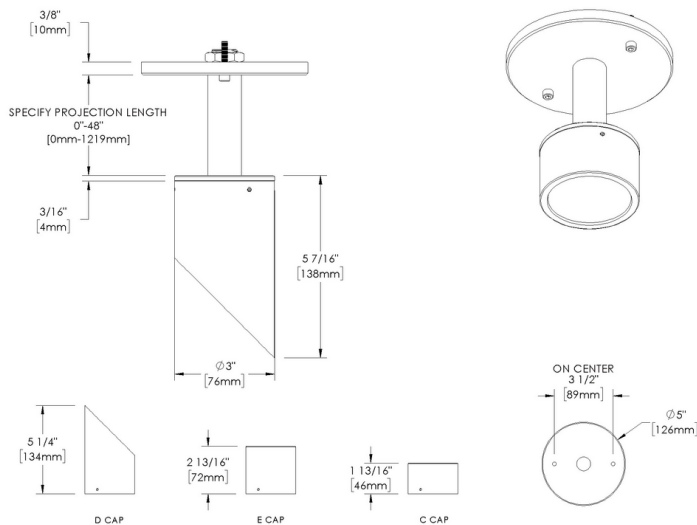
IP66



Downloads

- Product Images (.zip)
- Technical Drawing (.zip)
- 2D (.dwg)
- 2D (.dxf)
- IES Files (.zip)
- BIM - Revit (.zip)
- Installation Instructions (.pdf)

Product Variant Examples



DEMI - Ceiling Mount - Line Voltage - LED High-Power - Stem Mount

Available Logic & Configurations

DI- CM- LID- LHP- AL- ST- - -
01 02 03 04 05 06B 06C 06F

- 01 SERIES**
DI - DEMI
- 02 CATEGORY**
CM - Ceiling Mount
- 03 DRIVER**
LID - Line Voltage
- 04 LIGHT SOURCE (TYPE)**
LHP - LED High-Power

- 05 MATERIAL**
AL - Aluminum
- 06B MOUNT**
ST - Stem Mount
- 06C STYLE**
CC - Cap C - Flush Lens
CD - Cap D - 45°
CE - Cap E - 90°
- 06F SIZE**
ST03 - Stem length: 03"
ST06 - Stem length: 06"
ST12 - Stem length: 12"
ST18 - Stem length: 18"
ST24 - Stem length: 24"
ST30 - Stem length: 30"
ST36 - Stem length: 36"
ST42 - Stem length: 42"
ST48 - Stem length: 48"

- - - - - WL00- -
07 08 09 10A 10B 11 12

- 07 LIGHT SOURCE**
e150 - 2700K CRI80 - 9W (370 - 458 lm)
e151 - 3000K CRI80 - 9W (406 - 502 lm)
e152 - 3500K CRI80 - 9W (419 - 518 lm)
e153 - 4000K CRI80 - 9W (403 - 499 lm)
e154 - 2700K CRI90 - 9W
e155 - 3000K CRI90 - 9W
e156 - 3500K CRI90 - 9W
e157 - 4000K CRI90 - 9W

- 08 OPTIC**
VNSP - Very Narrow Spot (7°)
NSP - Narrow Spot (10°)
SP - Spot (17.5°)
MFL - Medium Flood (30°)
FL - Flood (41°)

- 09 CONTROL**
ELV - ELV Dimming (For use with Electronic Low Voltage Dimmer. 120V only.)
INC - INC Dimming (For use with Incandescent Dimmer. 120V only.)
010 - 0-10V (120V,277V)
- 10A LENS**
09 - Clear (Standard)
13 - Rectilinear
- 10B SHIELDING**
00 - Not included (Standard)
11 - Honeycomb Baffle
- 11 WIRING LENGTH**
WL00 - Standard
- 12 FINISH**
Standard Finishes
BLP, BZP, WHP, SAP, BLW, BZW, WHW, VER
Premium Finishes
CMG, SMG, RMG, AMG, TXF, BCM, BGE, WCP, OCP, HUG, ABP, BPP, SDS,
WIR, CAP, CRM, AQW, NBP
Other - RAL
RAL
Other - Custom Color
CUS

NOTE: Not all configurations may be compatible with one another. Please configure the product for specific 2D, Photometry, Downloads, Spec Sheet and Compatible mountings and power supplies.

DEMI - Ceiling Mount - Line Voltage - LED High-Power - Stem Mount

Features



Anti-condensation vent allows moisture to exit the fixture but never enter in



Lens factory adhered to fixture cap providing hermetically sealed optical compartment



Manufactured in the USA with sustainable processes



Water-tight anti-siphon plug prevents moisture ingress from wireways



Secured with tamper-resistant, stainless steel hardware



Easily replaceable modular components reduce waste and extend fixture life



Slip fit cap & high temp. silicone 'O' ring provides reliable water-tight seal



Solid billet fixture body provides unmatched durability and heat management

Technical

Driver: Line Voltage

Light Source (Type): LED High-Power

Material: Aluminum

CCT (K): 2700, 3500, 3000, 4000

CRI: 80, 90

Input Power (W): 9

Delivered Lumens (lm): 370 - 518

Beam Angle (°): 7, 10, 17.5, 30, 41

Control: 0-10V (120V, 277V), ELV Dimming (For use with Electronic Low Voltage Dimmer. 120V only.), INC Dimming (For use with Incandescent Dimmer. 120V only.)

Mount: Stem Mount

Style: Cap C - Flush Lens, Cap D - 45°, Cap E - 90°

Input Voltage: 120V, 277V

Size: Stem length: 03", Stem length: 06", Stem length: 12", Stem length: 18", Stem length: 24", Stem length: 30", Stem length: 36", Stem length: 42", Stem length: 48"

Lens: Clear (Standard), Rectilinear

Shielding: Not included (Standard), Honeycomb Baffle

Wiring Length: Standard

Finish: Standard Finishes, Premium Finishes, Other - RAL, Other - Custom Color

Body: Unibody design with enclosed, water-proof wireway, integral heat sink, fully machined from solid billet, anti-condensation and corrosion vent equalizes fixture pressure and eliminates potential for damage to internal components.

Material Detail: Furnished in copper-free aluminum (6061-T6).

Light Source Detail: High power LEDs modular design with electrical disconnects.

Optics: Interchangeable optics permit changes in the field.

Hardware: Tamper-resistant, stainless steel hardware. Hardware is black oxide treated for additional corrosion resistance.

Sealing: 'O' Ring provides water-tight seal., Anti-condensation and corrosion vent equalizes fixture pressure and eliminates potential for damage to internal components.

Finish Detail: StarGuard, our 15-stage chromate-free process, cleans and conversion coats aluminum components prior to application of Class 'A' TGIC polyester powder coating. It is RoHS compliant.

Warranty: 5-year limited warranty.

DEMI - Ceiling Mount - Line Voltage - LED High-Power - Stem Mount

Finishes

STANDARD FINISHES



[BLP]
Satin Black



[BZP]
Satin Bronze



[WHP]
Satin White



[SAP]
Satin Aluminum



[BLW]
Black Wrinkle



[BZW]
Bronze Wrinkle



[WHW]
White Wrinkle



[VER]
Verde

PREMIUM FINISHES



[CMG]
Cascade Mountain Granite



[SMG]
Sierra Mountain Granite



[RMG]
Rocky Mountain Granite



[AMG]
Aleutian Mountain Granite



[TXF]
Textured Forest



[BCM]
Black Chrome



[BGE]
Beige



[WCP]
Weathered Copper



[OCP]
Old Copper



[HUG]
Hunter Green



[ABP]
Antique Brass Powder



[BPP]
Brown Patina Powder



[SDS]
Sonoran Desert Sandstone



[WIR]
Weathered Iron



[CAP]
Clear Anodized Powder



[CRM]
Cream



[AQW]
Antique White



[NBP]
Natural Brass Powder

OTHER - RAL



[RAL]
RAL Color

OTHER - CUSTOM COLOR



[CUS]
Custom Color

DEMI - Ceiling Mount - Line Voltage - LED High-Power - Stem Mount

Light Source

| Light Source | Optic | Beam Angle | CCT (K) | CRI | R9 | Input Power (W) | Delivered Lumens (Lm) | CBCP |
|--------------|-------------------------|------------|---------|-----|-----|-----------------|-----------------------|-------|
| e150 | VNSP - Very Narrow Spot | 7 | 2700 | 80 | >15 | 9 | 413 | 12923 |
| e150 | NSP - Narrow Spot | 10 | 2700 | 80 | >15 | 9 | 458 | 6486 |
| e150 | SP - Spot | 17.5 | 2700 | 80 | >15 | 9 | 425 | 2627 |
| e150 | MFL - Medium Flood | 30 | 2700 | 80 | >15 | 9 | 415 | 841 |
| e150 | FL - Flood | 41 | 2700 | 80 | >15 | 9 | 370 | 428 |
| e151 | VNSP - Very Narrow Spot | 7 | 3000 | 80 | >15 | 9 | 453 | 14177 |
| e151 | NSP - Narrow Spot | 10 | 3000 | 80 | >15 | 9 | 502 | 7115 |
| e151 | SP - Spot | 17.5 | 3000 | 80 | >15 | 9 | 466 | 2882 |
| e151 | MFL - Medium Flood | 30 | 3000 | 80 | >15 | 9 | 455 | 922 |
| e151 | FL - Flood | 41 | 3000 | 80 | >15 | 9 | 406 | 469 |
| e152 | VNSP - Very Narrow Spot | 7 | 3500 | 80 | >15 | 9 | 467 | 14624 |
| e152 | NSP - Narrow Spot | 10 | 3500 | 80 | >15 | 9 | 518 | 7339 |
| e152 | SP - Spot | 17.5 | 3500 | 80 | >15 | 9 | 481 | 2973 |
| e152 | MFL - Medium Flood | 30 | 3500 | 80 | >15 | 9 | 469 | 951 |
| e152 | FL - Flood | 41 | 3500 | 80 | >15 | 9 | 419 | 484 |
| e153 | VNSP - Very Narrow Spot | 7 | 4000 | 80 | >15 | 9 | 450 | 14072 |
| e153 | NSP - Narrow Spot | 10 | 4000 | 80 | >15 | 9 | 499 | 7067 |
| e153 | SP - Spot | 17.5 | 4000 | 80 | >15 | 9 | 463 | 2863 |
| e153 | MFL - Medium Flood | 30 | 4000 | 80 | >15 | 9 | 452 | 916 |
| e153 | FL - Flood | 41 | 4000 | 80 | >15 | 9 | 403 | 466 |
| e154 | VNSP - Very Narrow Spot | 7 | 2700 | 90 | >50 | 9 | | |
| e154 | NSP - Narrow Spot | 10 | 2700 | 90 | >50 | 9 | | |
| e154 | SP - Spot | 17.5 | 2700 | 90 | >50 | 9 | | |
| e154 | MFL - Medium Flood | 30 | 2700 | 90 | >50 | 9 | | |
| e154 | FL - Flood | 41 | 2700 | 90 | >50 | 9 | | |
| e155 | VNSP - Very Narrow Spot | 7 | 3000 | 90 | >50 | 9 | | |
| e155 | NSP - Narrow Spot | 10 | 3000 | 90 | >50 | 9 | | |
| e155 | SP - Spot | 17.5 | 3000 | 90 | >50 | 9 | | |
| e155 | MFL - Medium Flood | 30 | 3000 | 90 | >50 | 9 | | |
| e155 | FL - Flood | 41 | 3000 | 90 | >50 | 9 | | |
| e156 | VNSP - Very Narrow Spot | 7 | 3500 | 90 | >50 | 9 | | |
| e156 | NSP - Narrow Spot | 10 | 3500 | 90 | >50 | 9 | | |
| e156 | SP - Spot | 17.5 | 3500 | 90 | >50 | 9 | | |
| e156 | MFL - Medium Flood | 30 | 3500 | 90 | >50 | 9 | | |
| e156 | FL - Flood | 41 | 3500 | 90 | >50 | 9 | | |
| e157 | VNSP - Very Narrow Spot | 7 | 4000 | 90 | >50 | 9 | | |
| e157 | NSP - Narrow Spot | 10 | 4000 | 90 | >50 | 9 | | |
| e157 | SP - Spot | 17.5 | 4000 | 90 | >50 | 9 | | |
| e157 | MFL - Medium Flood | 30 | 4000 | 90 | >50 | 9 | | |
| e157 | FL - Flood | 41 | 4000 | 90 | >50 | 9 | | |