

HUME - In-grade - Line Voltage - LED COB - Faceplate Flush Mount

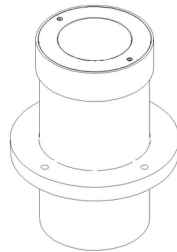
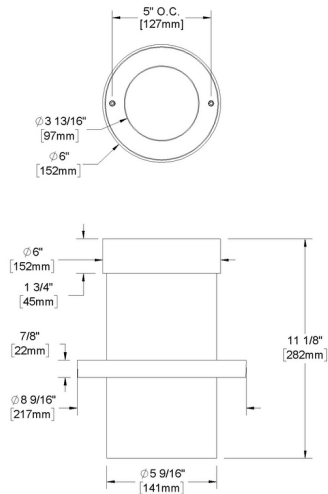
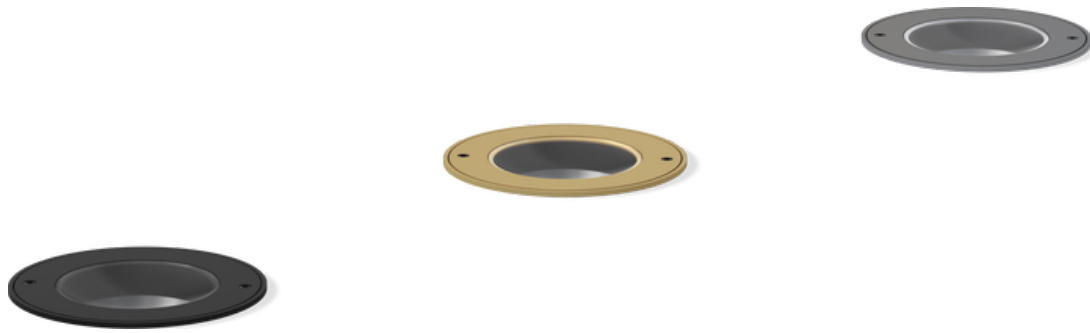
NEW

IP66

Downloads

- Product Images (.zip)
- Technical Drawing (.zip)
- 2D (.dwg)
- 2D (.dxf)
- IES Files (.zip)
- BIM - Revit (.zip)
- Installation Instructions (.pdf)

Product Variant Examples



HUME - In-grade - Line Voltage - LED COB - Faceplate Flush Mount

Available Logic & Configurations

HU- 01 **IN-** 02 **LID-** 03 **LCB-** 04 **-** 05 **FFM-** 06B **-** 06D **-** 06E

- 01 SERIES**
HU - HUME
- 02 CATEGORY**
IN - In-grade
- 03 DRIVER**
LID - Line Voltage
- 04 LIGHT SOURCE (TYPE)**
LCB - LED COB

- 05 MATERIAL**
AL - Aluminum
BR - Brass
SS - Stainless Steel
- 06B MOUNT**
FFM - Faceplate Flush Mount
- 06D VERSION**
ONAR - Narrow Optic
OOTH - Other Optics
- 06E INPUT VOLTAGE**
120 - 120V
277 - 277V

- 07 **-** 08 **-** 09 **-** 10A **-** 10B **WL00-** 11 **-** 12

- 07 LIGHT SOURCE**
 - x113 - 2700K CRI80 - 34W (3265 - 3326 lm)
 - x114 - 3000K CRI80 - 34W (3281 - 3342 lm)
 - x115 - 3500K CRI80 - 34W (3557 - 3558 lm)
 - x116 - 4000K CRI80 - 34W (3616 - 3683 lm)
 - x117 - 2700K CRI90 - 34W (2631 - 3099 lm)
 - x118 - 3000K CRI90 - 34W (2657 - 2706 lm)
 - x119 - 3500K CRI90 - 34W (3011 - 3066 lm)
 - x120 - 4000K CRI90 - 34W (3227 - 3286 lm)
 - x105 - 2700K CRI80 - 36W (1500 - 1500 lm)
 - x106 - 3000K CRI80 - 36W (1750 - 1750 lm)
 - x107 - 3500K CRI80 - 36W (1648 - 1648 lm)
 - x108 - 4000K CRI80 - 36W (1681 - 1681 lm)
 - x109 - 2700K CRI90 - 36W (937 - 937 lm)
 - x110 - 3000K CRI90 - 36W (1275 - 1275 lm)
 - x111 - 3500K CRI90 - 36W (1131 - 1131 lm)
 - x112 - 4000K CRI90 - 36W (1177 - 1177 lm)

- 08 OPTIC**
 - NSP - Narrow Spot (11°)
 - NFL - Narrow Flood (25°)
 - FL - Flood (43°)
 - WFL - Wide Flood (56°)

- 09 CONTROL**
 - INC - INC Dimming (For use with Incandescent Dimmer. 120V only.)
 - ELV - ELV Dimming (For use with Electronic Low Voltage Dimmer. 120V only.)
 - 010 - 0-10V (120V,277V)
- 10A LENS**
 - 09 - Clear (Standard)
 - 12 - Soft Focus
 - 13 - Rectilinear
- 10B SHIELDING**
 - 00 - Not included (Standard)
 - 11 - Honeycomb Baffle
- 11 WIRING LENGTH**
WL00 - Standard
- 12 FINISH**
 - Standard Finishes
BLP, BZP, WHP, SAP, BLW, BZW, WHW, VER
 - Premium Finishes
CMG, SMG, RMG, AMG, TXF, BCM, BGE, WCP, OCP, HUG, ABP, BPP, SDS,
 - WIR, CAP, CRM, AQW, NBP
 - Other - RAL
 - RAL
 - Other - Custom Color
 - CUS
 - Brass Finishes
MAB, POB, MIT
 - Stainless Steel Finishes
MAS, POS

NOTE: Not all configurations may be compatible with one another. Please configure the product for specific 2D, Photometry, Downloads, Spec Sheet and Compatible mountings and power supplies.

HUME - In-grade - Line Voltage - LED COB - Faceplate Flush Mount

Features



Lens factory adhered to fixture cap providing hermetically sealed optical compartment



Secured with flush, countersunk tamper resistant hardware



Machined solid billet faceplate provides unmatched strength and durability



Manufactured in the USA with sustainable processes



Water-tight anti-siphon plug prevents moisture ingress from wireways



Easily replaceable modular components reduce waste and extend fixture life



Solid billet fixture body provides unmatched durability and heat management

Technical

Driver: Line Voltage

Light Source (Type): LED COB

Material: Aluminum, Brass, Stainless Steel

CCT (K): 2700, 3500, 3000, 4000

CRI: 80, 90

Input Power (W): 34, 36

Delivered Lumens (lm): 937 - 3683

Beam Angle (°): 11, 25, 43, 56

Control: 0-10V (120V, 277V), ELV Dimming (For use with Electronic Low Voltage Dimmer. 120V only.), INC Dimming (For use with Incandescent Dimmer. 120V only.)

Mount: Faceplate Flush Mount

Version: Other Optics, Narrow Optic

Input Voltage: 120V, 277V

Lens: Soft Focus, Clear (Standard), Rectilinear

Shielding: Not included (Standard), Honeycomb Baffle

Wiring Length: Standard

Finish: Standard Finishes, Premium Finishes, Other - RAL, Other - Custom Color, Brass Finishes, Stainless Steel Finishes

Body: Unibody design with enclosed, water-proof wireway, integral heat sink, fully machined from solid billet, anti-condensation and corrosion vent equalizes fixture pressure and eliminates potential for damage to internal components.

Material Detail: Furnished in stainless steel (304), Furnished in brass (360), Furnished in copper-free aluminum (6061-T6).

Light Source Detail: COB (Chip on Board) technology and modular design with electrical quick disconnects.

Optics: Interchangeable optics permit changes in the field.

Hardware: Tamper-resistant, stainless steel hardware. Hardware is black oxide treated for additional corrosion resistance.

Sealing: 'O' Ring provides water-tight seal., Anti-condensation and corrosion vent equalizes fixture pressure and eliminates potential for damage to internal components.

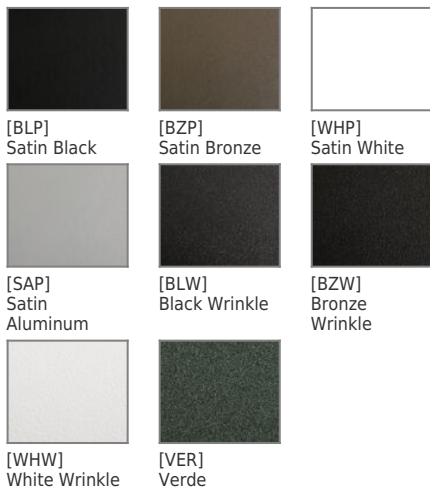
Finish Detail: Powder coat or metal finish options available for brass material., Metal finish option only for stainless steel material., StarGuard, our 15-stage chromate-free process, cleans and conversion coats aluminum components prior to application of Class 'A' TGIC polyester powder coating. It is RoHS compliant.

Warranty: 5-year limited warranty.

HUME - In-grade - Line Voltage - LED COB - Faceplate Flush Mount

Finishes

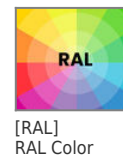
STANDARD FINISHES



PREMIUM FINISHES



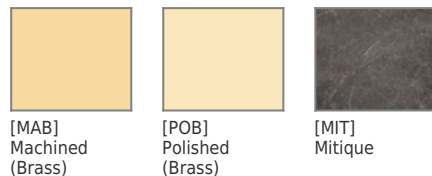
OTHER - RAL



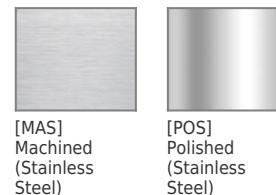
OTHER - CUSTOM COLOR



BRASS FINISHES



STAINLESS STEEL FINISHES



HUME - In-grade - Line Voltage - LED COB - Faceplate Flush Mount

Light Source

Light Source	Optic	Beam Angle	CCT (K)	CRI	R9	Input Power (W)	Delivered Lumens (Lm)	CBCP
x113	NFL - Narrow Flood	25	2700	80	>15	34	3325	8372
x113	FL - Flood	43	2700	80	>15	34	3326	4372
x113	WFL - Wide Flood	56	2700	80	>15	34	3265	3556
x114	NFL - Narrow Flood	25	3000	80	>15	34	3341	8413
x114	FL - Flood	43	3000	80	>15	34	3342	4393
x114	WFL - Wide Flood	56	3000	80	>15	34	3281	3573
x115	NFL - Narrow Flood	25	3500	80	>15	34	3557	8955
x115	FL - Flood	43	3500	80	>15	34	3558	4676
x115	WFL - Wide Flood	56	3500	80	>15	34	3557	8955
x116	NFL - Narrow Flood	25	4000	80	>15	34	3682	9271
x116	FL - Flood	43	4000	80	>15	34	3683	4841
x116	WFL - Wide Flood	56	4000	80	>15	34	3616	3938
x117	NFL - Narrow Flood	25	2700	90	>50	34	3099	6746
x117	FL - Flood	43	2700	90	>50	34	2680	3522
x117	WFL - Wide Flood	56	2700	90	>50	34	2631	2865
x118	NFL - Narrow Flood	25	3000	90	>50	34	2705	6812
x118	FL - Flood	43	3000	90	>50	34	2706	3557
x118	WFL - Wide Flood	56	3000	90	>50	34	2657	2894
x119	NFL - Narrow Flood	25	3500	90	>50	34	3065	7719
x119	FL - Flood	43	3500	90	>50	34	3066	4030
x119	WFL - Wide Flood	56	3500	90	>50	34	3011	3279
x120	NFL - Narrow Flood	25	4000	90	>50	34	3285	8273
x120	FL - Flood	43	4000	90	>50	34	3286	4320
x120	WFL - Wide Flood	56	4000	90	>50	34	3227	3514
x105	NSP - Narrow Spot	11	2700	80	>15	36	1500	23306
x106	NSP - Narrow Spot	11	3000	80	>15	36	1750	27190
x107	NSP - Narrow Spot	11	3500	80	>15	36	1648	25605
x108	NSP - Narrow Spot	11	4000	80	>15	36	1681	26118
x109	NSP - Narrow Spot	11	2700	90	>50	36	937	14557
x110	NSP - Narrow Spot	11	3000	90	>50	36	1275	19814
x111	NSP - Narrow Spot	11	3500	90	>50	36	1131	17572
x112	NSP - Narrow Spot	11	4000	90	>50	36	1177	18283