

HUME - Light Pole - Line Voltage - LED COB - Round Straight Pole - Horizontal - Narrow Optic

NEW



IP66



Downloads

- Product Images (.zip)
- IES Files (.zip)
- BIM - Revit (.zip)
- Installation Instructions (.pdf)

Product Variant Examples



HUME - Light Pole - Line Voltage - LED COB - Round Straight Pole - Horizontal - Narrow Optic

Available Logic & Configurations

HU- **LP-** **LID-** **LCB-** **AL-** **-** **-** **-** **-** **-** **-**
 01 02 03 04 05 06A 06B 06C 06D 06E 06F

01 SERIES
 HU - HUME
02 CATEGORY
 LP - Light Pole
03 DRIVER
 LID - Line Voltage
04 LIGHT SOURCE (TYPE)
 LCB - LED COB

05 MATERIAL
 AL - Aluminum
06A SHAPE
 RO-RK - Round - Rear Knuckle
 RO-SK - Round - Side Knuckle
06B MOUNT
 RSAP4 - Round Straight Aluminum Pole 4" (Maximum 16')
 RSAP5 - Round Straight Aluminum Pole 5" (Required for 20' Height)
 RSSP4 - Round Straight Steel Pole 4"
06C STYLE
 CA - Cap A - 45° (With Weephole)
 CB - Cap B - 90° (With Weephole)
 CC - Cap C - Flush Lens
 CD - Cap D - 45°
 CE - Cap E - 90°
06D VERSION
 F28-ONAR - 2 Fixtures @ 180° - Narrow Optic
 F29-ONAR - 2 Fixtures @ 90° - Narrow Optic
 F32-ONAR - 3 Fixtures @ 120° - Narrow Optic
 F39-ONAR - 3 Fixtures @ 90° - Narrow Optic
 F49-ONAR - 4 Fixtures @ 90° - Narrow Optic
06E INPUT VOLTAGE
 120 - 120V
 277 - 277V
06F SIZE
 HF08 - Height: 08'
 HF10 - Height: 10'
 HF12 - Height: 12'
 HF16 - Height: 16'
 HF20 - Height: 20'

- **NSP-** **-** **-** **-** **WL00-** **-** **-**
 07 08 09 10A 10B 11 12 13

07 LIGHT SOURCE
 x105 - 2700K CRI80 - 36W (1500 - 1500 lm)
 x106 - 3000K CRI80 - 36W (1750 - 1750 lm)
 x107 - 3500K CRI80 - 36W (1648 - 1648 lm)
 x108 - 4000K CRI80 - 36W (1681 - 1681 lm)
 x109 - 2700K CRI90 - 36W (937 - 937 lm)
 x110 - 3000K CRI90 - 36W (1275 - 1275 lm)
 x111 - 3500K CRI90 - 36W (1131 - 1131 lm)
 x112 - 4000K CRI90 - 36W (1177 - 1177 lm)

08 OPTIC
 NSP - Narrow Spot (11°)

09 CONTROL
 INC - INC Dimming (For use with Incandescent Dimmer. 120V only.)
 ELV - ELV Dimming (For use with Electronic Low Voltage Dimmer. 120V only.)
 010 - 0-10V (120V,277V)
10A LENS
 09 - Clear (Standard)
 12 - Soft Focus
 13 - Rectilinear
10B SHIELDING
 00 - Not included (Standard)
 11 - Honeycomb Baffle
11 WIRING LENGTH
 WL00 - Standard
12 FINISH
 Standard Finishes
 BLP, BZP, WHP, SAP, BLW, BZW, WHW, VER
 Premium Finishes
 CMG, SMG, RMG, AMG, TXF, BCM, BGE, WCP, OCP, HUG, ABP, BPP, SDS,
 WIR, CAP, CRM, AQW, NBP
 Other - RAL
 RAL
 Other - Custom Color
 CUS
13 OPTION
 TE - Tamper Resistant

NOTE: Not all configurations may be compatible with one another. Please configure the product for specific 2D, Photometry, Downloads, Spec Sheet and Compatible mountings and power supplies.

HUME - Light Pole - Line Voltage - LED COB - Round Straight Pole - Horizontal - Narrow Optic

Features



Anti-condensation vent allows moisture to exit the fixture but never enter in



Lens factory adhered to fixture cap providing hermetically sealed optical compartment



Manufactured in the USA with sustainable processes



Aim & Lock knuckle eliminates need for re-aiming & adjustments



Water-tight anti-siphon plug prevents moisture ingress from wireways



Secured with tamper-resistant, stainless steel hardware



Easily replaceable modular components reduce waste and extend fixture life



Slip fit cap & high temp. silicone 'O' ring provides reliable water-tight seal



Solid billet fixture body provides unmatched durability and heat management



360HD knuckle provides 360° horizontal rotation and vertical adjustment

Technical

Driver: Line Voltage

Light Source (Type): LED COB

Material: Aluminum

CCT (K): 2700, 3500, 3000, 4000

CRI: 80, 90

Input Power (W): 36

Delivered Lumens (lm): 937 - 1750

Beam Angle (°): 11

Control: 0-10V (120V, 277V), ELV Dimming (For use with Electronic Low Voltage Dimmer. 120V only.), INC Dimming (For use with Incandescent Dimmer. 120V only.)

Shape: Round - Rear Knuckle, Round - Side Knuckle

Mount: Round Straight Aluminum Pole 4" (Maximum 16'), Round Straight Steel Pole 4", Round Straight Aluminum Pole 5" (Required for 20' Height)

Style: Cap A - 45° (With Weephole), Cap B - 90° (With Weephole), Cap C - Flush Lens, Cap D - 45°, Cap E - 90°

Version: 2 Fixtures @ 180° - Narrow Optic, 2 Fixtures @ 90° - Narrow Optic, 3 Fixtures @ 90° - Narrow Optic, 3 Fixtures @ 120° - Narrow Optic, 4 Fixtures @ 90° - Narrow Optic

Input Voltage: 120V, 277V

Size: Height: 08', Height: 10', Height: 12', Height: 16', Height: 20'

Lens: Soft Focus, Clear (Standard), Rectilinear

Shielding: Not included (Standard), Honeycomb Baffle

Wiring Length: Standard

Finish: Standard Finishes, Premium Finishes, Other - RAL, Other - Custom Color

Option: Tamper Resistant

Body: Unibody design with enclosed, water-proof wireway, integral heat sink, fully machined from solid billet, anti-condensation and corrosion vent equalizes fixture pressure and eliminates potential for damage to internal components.

Material Detail: Furnished in copper-free aluminum (6061-T6).

Aiming: 360HD Mounting System can adjust 180° vertically and rotate 360° horizontally. 'O' Ring helps maintain fixture position. Design withstands 73 lb. static load prior to movement for optical alignment with a ½" pipe thread for mounting.

Light Source Detail: COB (Chip on Board) technology and modular design with electrical quick disconnects.

Optics: Interchangeable optics permit changes in the field.

Hardware: Tamper-resistant, stainless steel hardware. Luminaire hardware is black oxide treated for additional corrosion resistance.

Sealing: 'O' Ring provides water-tight seal., Anti-condensation and corrosion vent equalizes fixture pressure and eliminates potential for damage to internal components.

Finish Detail: StarGuard, our 15-stage chromate-free process, cleans and conversion coats aluminum components prior to application of Class 'A' TGIC polyester powder coating. It is RoHS compliant.

Warranty: 5-year limited warranty.

HUME - Light Pole - Line Voltage - LED COB - Round Straight Pole - Horizontal - Narrow Optic

Finishes

STANDARD FINISHES



[BLP]
Satin Black



[BZP]
Satin Bronze



[WHP]
Satin White



[SAP]
Satin
Aluminum



[BLW]
Black Wrinkle



[BZW]
Bronze
Wrinkle



[WHW]
White Wrinkle



[VER]
Verde

PREMIUM FINISHES



[CMG]
Cascade
Mountain
Granite



[SMG]
Sierra
Mountain
Granite



[RMG]
Rocky
Mountain
Granite



[AMG]
Aleutian
Mountain
Granite



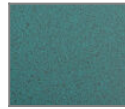
[TXF]
Textured
Forest



[BCM]
Black Chrome



[BGE]
Beige



[WCP]
Weathered
Copper



[OCP]
Old Copper



[HUG]
Hunter Green



[ABP]
Antique Brass
Powder



[BPP]
Brown Patina
Powder



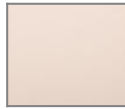
[SDS]
Sonoran
Desert
Sandstone



[WIR]
Weathered
Iron



[CAP]
Clear
Anodized
Powder



[CRM]
Cream



[AQW]
Antique White



[NBP]
Natural Brass
Powder

OTHER - RAL



[RAL]
RAL Color

OTHER - CUSTOM COLOR



[CUS]
Custom Color

HUME - Light Pole - Line Voltage - LED COB - Round Straight Pole - Horizontal - Narrow Optic

Light Source

Light Source	Optic	Beam Angle	CCT (K)	CRI	R9	Input Power (W)	Delivered Lumens (Lm)	CBCP
x105	NSP - Narrow Spot	11	2700	80	>15	36	1500	23306
x106	NSP - Narrow Spot	11	3000	80	>15	36	1750	27190
x107	NSP - Narrow Spot	11	3500	80	>15	36	1648	25605
x108	NSP - Narrow Spot	11	4000	80	>15	36	1681	26118
x109	NSP - Narrow Spot	11	2700	90	>50	36	937	14557
x110	NSP - Narrow Spot	11	3000	90	>50	36	1275	19814
x111	NSP - Narrow Spot	11	3500	90	>50	36	1131	17572
x112	NSP - Narrow Spot	11	4000	90	>50	36	1177	18283