

K2 - Floodlight - Remote Driver - LED Color Tuning

TEMPORARILY UNAVAILABLE



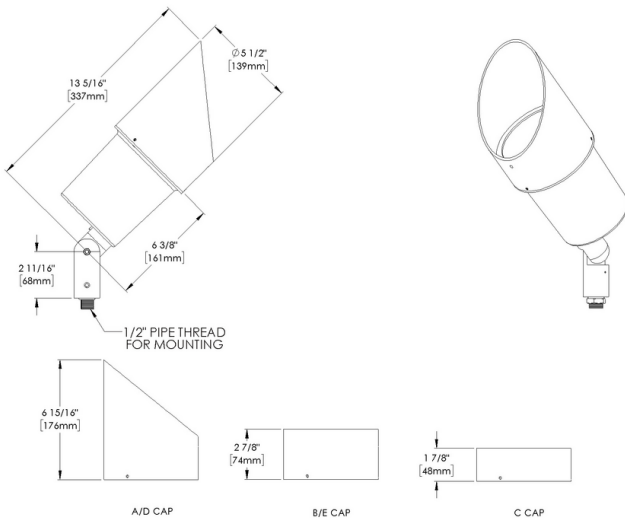
IP66



Downloads

- Product Images (.zip)
- Technical Drawing (.zip)
- 2D (.dwg)
- 2D (.dxf)
- IES Files (.zip)
- BIM - Revit (.zip)
- Installation Instructions (.pdf)

Product Variant Examples



K2 - Floodlight - Remote Driver - LED Color Tuning

Available Logic & Configurations

K2- **FL-** **RMD-** **LCT-** **AL-** **TKM-** **___-**
 01 02 03 04 05 06B 06C

01 SERIES

K2 - K2

02 CATEGORY

FL - Floodlight

03 DRIVER

RMD - Remote Driver

04 LIGHT SOURCE (TYPE)

LCT - LED Color Tuning

05 MATERIAL

AL - Aluminum

06B MOUNT

TKM - Threaded Knuckle Mount

06C STYLE

CA - Cap A - 45° (With Weephole)

CB - Cap B - 90° (With Weephole)

CC - Cap C - Flush Lens

CD - Cap D - 45°

CE - Cap E - 90°

C26- **___-** **12-** **___-** **WL00-** **___-**
 07 08 10A 10B 11 12

07 LIGHT SOURCE

C26 - 1650-8000K + Saturation and Hue CRI95+ - 42W

08 OPTIC

SP - Spot

MFL - Medium Flood

FL - Flood

10A LENS

12 - Soft Focus

10B SHIELDING

00 - Not included (Standard)

11 - Honeycomb Baffle

11 WIRING LENGTH

WL00 - Standard

12 FINISH

Standard Finishes

BLP, BZP, WHP, SAP, BLW, BZW, WHW, VER

Premium Finishes

CMG, SMG, RMG, AMG, TXF, BCM, BGE, WCP, OCP, HUG, ABP, BPP, SDS,

WIR, CAP, CRM, AQW, NBP

Other - RAL

RAL

Other - Custom Color

CUS

NOTE: Not all configurations may be compatible with one another. Please configure the product for specific 2D, Photometry, Downloads, Spec Sheet and Compatible mountings and power supplies.

WARNING: This is a remote driver product. Please check "Mountings With A Power Supply" or "Power Supplies" to order remote driver separately. (IMPORTANT: Driver wattage MUST match selected fixture wattage. Example: 12W Light Source = 12W Driver)

K2 - Floodlight - Remote Driver - LED Color Tuning

Features



Manufactured in the USA with sustainable processes



Aim & Lock knuckle eliminates need for re-aiming & adjustments



Water-tight anti-siphon plug prevents moisture ingress from wireways



Secured with tamper-resistant, stainless steel hardware



Easily replaceable modular components reduce waste and extend fixture life

Technical

Driver: Remote Driver

Light Source (Type): LED Color Tuning

Material: Aluminum

CCT (K): 2700, 3000, 4000, 1650 - 8000

CRI: 95, 90

Input Power (W): 42

Delivered Lumens (lm): 907 - 1580

Beam Angle (°): 16, 34, 41

Mount: Threaded Knuckle Mount

Style: Cap A - 45° (With Weephole), Cap B - 90° (With Weephole), Cap C - Flush Lens, Cap D - 45°, Cap E - 90°

Lens: Soft Focus

Shielding: Not included (Standard), Honeycomb Baffle

Wiring Length: Standard

Finish: Standard Finishes, Premium Finishes, Other - RAL, Other - Custom Color

Body: Unibody design, with enclosed, water-proof wireway and integral heat sink, fully machined from solid billet.

Material Detail: Furnished in copper-free aluminum (6061-T6).

Aiming: 360HD Mounting System can adjust 180° vertically and rotate 360° horizontally. 'O' Ring helps maintain fixture position. Design withstands 73 lb. static load prior to movement for optical alignment with a ½" pipe thread for mounting.

Light Source Detail: LED Color Tuning

Optics: Interchangeable optics permit changes in the field.

Hardware: Tamper-resistant, stainless steel hardware. Hardware is black oxide treated for additional corrosion resistance.

Sealing: 'O' Ring provides water-tight seal.

Finish Detail: StarGuard, our 15-stage chromate-free process, cleans and conversion coats aluminum components prior to application of Class 'A' TGIC polyester powder coating. It is RoHS compliant.

Warranty: 5-year limited warranty.

WARNING: This is a remote driver product. Please check "Mountings With A Power Supply" or "Power Supplies" to order remote driver separately. (IMPORTANT: Driver wattage MUST match selected fixture wattage. Example: 12W Light Source = 12W Driver)

K2 - Floodlight - Remote Driver - LED Color Tuning

Finishes

STANDARD FINISHES



[BLP]
Satin Black



[BZP]
Satin Bronze



[WHP]
Satin White



[SAP]
Satin Aluminum



[BLW]
Black Wrinkle



[BZW]
Bronze Wrinkle



[WHW]
White Wrinkle



[VER]
Verde

PREMIUM FINISHES



[CMG]
Cascade Mountain Granite



[SMG]
Sierra Mountain Granite



[RMG]
Rocky Mountain Granite



[AMG]
Aleutian Mountain Granite



[TXF]
Textured Forest



[BCM]
Black Chrome



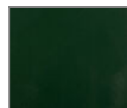
[BGE]
Beige



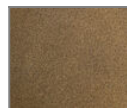
[WCP]
Weathered Copper



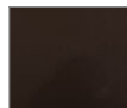
[OCP]
Old Copper



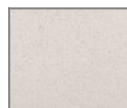
[HUG]
Hunter Green



[ABP]
Antique Brass Powder



[BPP]
Brown Patina Powder



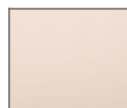
[SDS]
Sonoran Desert Sandstone



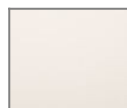
[WIR]
Weathered Iron



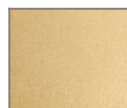
[CAP]
Clear Anodized Powder



[CRM]
Cream



[AQW]
Antique White



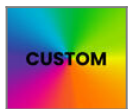
[NBP]
Natural Brass Powder

OTHER - RAL



[RAL]
RAL Color

OTHER - CUSTOM COLOR



[CUS]
Custom Color

K2 - Floodlight - Remote Driver - LED Color Tuning

Light Source

Light Source	Optic	Beam Angle	CCT (K)	CRI	R9	Input Power (W)	Delivered Lumens (Lm)	CBCP
C26	FL - Flood		1650 - 8000	90	>50	42		
C26	MFL - Medium Flood		1650 - 8000	90	>50	42		
C26	SP - Spot		1650 - 8000	90	>50	42		
C26	SP - Spot		3000	95	>50	42		
C26	SP - Spot	16	2700	95	>50	42	937	5681
C26	SP - Spot	16	3000	95	>50	42	1101	6673
C26	MFL - Medium Flood	34	2700	95	>50	42	995	2274
C26	MFL - Medium Flood	34	3000	95	>50	42	1169	2671
C26	MFL - Medium Flood	34	4000	95	>50	42	1580	3609
C26	FL - Flood	41	2700	95	>50	42	907	1642
C26	FL - Flood	41	3000	95	>50	42	1066	1928
C26	FL - Flood	41	4000	95	>50	42	1440	2606