

MINI MICRO ILUME - Wall Recessed - Low Voltage - LED High-Power - Faceplate Invisi Mount

UPGRADED



IP65

Downloads

- Product Images (.zip)
- Technical Drawing (.zip)
- IES Files (.zip)
- BIM - Revit (.zip)
- Installation Instructions (.pdf)

Product Variant Examples



MINI MICRO ILUME - Wall Recessed - Low Voltage - LED High-Power - Faceplate Invisi Mount

Available Logic & Configurations

MI- **WR-** **LOD-** **LHP-** **-** **CD-** **-** **FIM-**
01 02 03 04 05 06B 06C 06D

01 SERIES

MI - MINI MICRO ILUME

02 CATEGORY

WR - Wall Recessed

03 DRIVER

LOD - Low Voltage

04 LIGHT SOURCE (TYPE)

LHP - LED High-Power

05 MATERIAL

AL - Aluminum

BR - Brass

SS - Stainless Steel

06B MOUNT

CD - Core Drill

06C STYLE

SA-O10 - Style A - Single Optical Opening

SA-O20 - Style A - 2 Optical Openings

SA-O40 - Style A - 4 Optical Openings

SB-O10 - Style B - Single Optical Opening

SB-O20 - Style B - 2 Optical Openings

SB-O40 - Style B - 4 Optical Openings

06D VERSION

FIM - Faceplate Invisi™ Mount

- **WL00-** **-**
07 11 12

07 LIGHT SOURCE

e70 - 2700K CRI80 - 3W (14 - 40 lm)

e71 - 3000K CRI80 - 3W (15 - 42 lm)

e72 - 4000K CRI80 - 3W (17 - 48 lm)

e73 - Amber - 3W

e85 - 2700K CRI90 - 3W

e86 - 3000K CRI90 - 3W

e87 - 3500K CRI80 - 3W

11 WIRING LENGTH

WL00 - Standard

12 FINISH

Standard Finishes

BLP, BZP, WHP, SAP, BLW, BZW, WHW, VER

Premium Finishes

CMG, SMG, RMG, AMG, TXF, BCM, BGE, WCP, OCP, HUG, ABP, BPP, SDS,

WIR, CAP, CRM, AQW, NBP

Other - RAL

RAL

Other - Custom Color

CUS

Brass Finishes

MAB, POB, MIT

Stainless Steel Finishes

MAS, POS

NOTE: Not all configurations may be compatible with one another. Please configure the product for specific 2D, Photometry, Downloads, Spec Sheet and Compatible mountings and power supplies.

MINI MICRO ILUME - Wall Recessed - Low Voltage - LED High-Power - Faceplate Invisi Mount

Features



Lens factory adhered to fixture cap providing hermetically sealed optical compartment



Manufactured in the USA with sustainable processes



Water-tight anti-siphon plug prevents moisture ingress from wireways



Secured with tamper-resistant, stainless steel hardware



Easily replaceable modular components reduce waste and extend fixture life

WARNING: This is a low voltage product. Please check "Mountings With A Power Supply" or "Power Supplies" to order remote transformer separately.

Technical

Driver: Low Voltage

Light Source (Type): LED High-Power

Material: Aluminum, Brass, Stainless Steel

CCT (K): Amber, 2700, 3500, 3000, 4000

CRI: 80, 90

Input Power (W): 3

Delivered Lumens (lm): 14 - 48

Beam Angle (°): 360h x 270v

Mount: Core Drill

Style: Style A - Single Optical Opening, Style A - 2 Optical Openings, Style A - 4 Optical Openings, Style B - Single Optical Opening, Style B - 2 Optical Openings, Style B - 4 Optical Openings

Version: Faceplate Invisi™ Mount

Wiring Length: Standard

Finish: Standard Finishes, Premium Finishes, Other - RAL, Other - Custom Color, Brass Finishes, Stainless Steel Finishes

Body: Unibody design, with enclosed, water-proof wireway and integral heat sink, fully machined from solid billet.

Material Detail: Furnished in stainless steel (304), Furnished in brass (360), Furnished in copper-free aluminum (6061-T6).

Light Source Detail: High power LEDs modular design with electrical disconnects., Non-dimming.

Hardware: Tamper-resistant, stainless steel hardware. Hardware is black oxide treated for additional corrosion resistance.

Sealing: 'O' Ring provides water-tight seal.

Finish Detail: Powder coat or metal finish options available for brass material., Metal finish option only for stainless steel material., StarGuard, our 15-stage chromate-free process, cleans and conversion coats aluminum components prior to application of Class 'A' TGIC polyester powder coating. It is RoHS compliant.

Warranty: 5-year limited warranty.

MINI MICRO ILUME - Wall Recessed - Low Voltage - LED High-Power - Faceplate Invisi Mount

Finishes

STANDARD FINISHES



[BLP]
Satin Black



[BZP]
Satin Bronze



[WHP]
Satin White



[SAP]
Satin Aluminum



[BLW]
Black Wrinkle



[BZW]
Bronze Wrinkle



[WHW]
White Wrinkle



[VER]
Verde

PREMIUM FINISHES



[CMG]
Cascade Mountain Granite



[SMG]
Sierra Mountain Granite



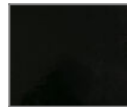
[RMG]
Rocky Mountain Granite



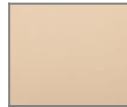
[AMG]
Aleutian Mountain Granite



[TXF]
Textured Forest



[BCM]
Black Chrome



[BGE]
Beige



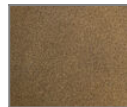
[WCP]
Weathered Copper



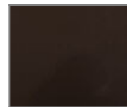
[OCP]
Old Copper



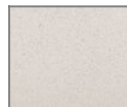
[HUG]
Hunter Green



[ABP]
Antique Brass Powder



[BPP]
Brown Patina Powder



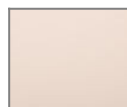
[SDS]
Sonoran Desert Sandstone



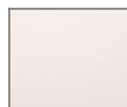
[WIR]
Weathered Iron



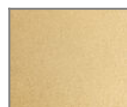
[CAP]
Clear Anodized Powder



[CRM]
Cream



[AQW]
Antique White



[NBP]
Natural Brass Powder

OTHER - RAL



[RAL]
RAL Color

OTHER - CUSTOM COLOR



[CUS]
Custom Color

BRASS FINISHES



[MAB]
Machined (Brass)



[POB]
Polished (Brass)



[MIT]
Mitique

STAINLESS STEEL FINISHES



[MAS]
Machined (Stainless Steel)



[POS]
Polished (Stainless Steel)

MINI MICRO ILUME - Wall Recessed - Low Voltage - LED High-Power - Faceplate Invisi Mount

Light Source

Light Source	Optic	Beam Angle	CCT (K)	CRI	R9	Input Power (W)	Delivered Lumens (Lm)	CBCP
e70	-	360h x 270v	2700	80	>15	3	14	
e71	-	360h x 270v	3000	80	>15	3	15	
e72	-	360h x 270v	4000	80	>15	3	17	
e73	-	360h x 270v	Amber			3		
e85	-	360h x 270v	2700	90	>50	3		
e86	-	360h x 270v	3000	90	>50	3		
e87	-	360h x 270v	3500	80	>15	3		
e70	-	360h x 270v	2700	80	>15	3	23	
e71	-	360h x 270v	3000	80	>15	3	24	
e72	-	360h x 270v	4000	80	>15	3	27	
e70	-	360h x 270v	2700	80	>15	3	40	
e71	-	360h x 270v	3000	80	>15	3	42	
e72	-	360h x 270v	4000	80	>15	3	48	