

MINI MICRO - In-grade - Low Voltage - LED High-Power - Flush Mount - Asymmetrical Optics

UPGRADED



IP65

Downloads

Product Images (.zip)

Technical Drawing (.zip)

2D (.dwg)

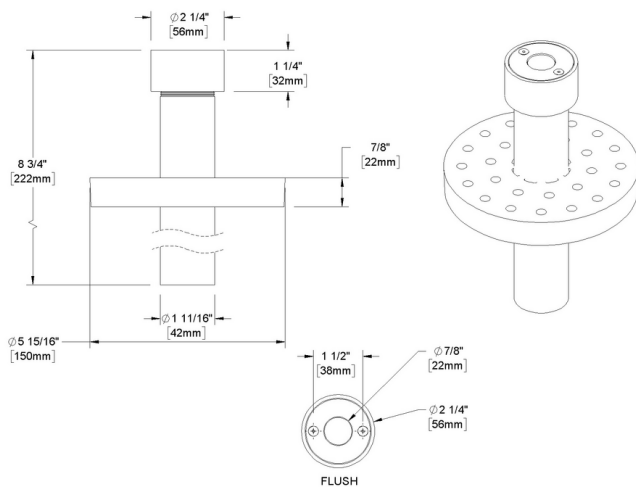
2D (.dxf)

IES Files (.zip)

BIM - Revit (.zip)

Installation Instructions (.pdf)

Product Variant Examples



MINI MICRO - In-grade - Low Voltage - LED High-Power - Flush Mount - Asymmetrical Optics

Available Logic & Configurations

MM- 01 **IN-** 02 **LOD-** 03 **LHP-** 04 **-** 05 **FFM-** 06B **OASY-** 06D

01 SERIES

MM - MINI MICRO

02 CATEGORY

IN - In-grade

03 DRIVER

LOD - Low Voltage

04 LIGHT SOURCE (TYPE)

LHP - LED High-Power

- 07 **ASY-** 08 **09-** 10A **-** 10B **-** 11 **-** 12

07 LIGHT SOURCE

- e70 - 2700K CRI80 - 3W (151 - 151 lm)
- e71 - 3000K CRI80 - 3W (158 - 158 lm)
- e72 - 4000K CRI80 - 3W (178 - 178 lm)
- e73 - Amber - 3W
- e85 - 2700K CRI90 - 3W
- e86 - 3000K CRI90 - 3W
- e87 - 3500K CRI80 - 3W

08 OPTIC

ASY - Asymmetrical (17x31°)

05 MATERIAL

- AL** - Aluminum
- BR** - Brass
- SS** - Stainless Steel

06B MOUNT

FFM - Faceplate Flush Mount

06D VERSION

OASY - Asymmetrical Optics

10A LENS

09 - Clear (Standard)

10B SHIELDING

- 00** - Not included (Standard)
- 11** - Honeycomb Baffle

11 WIRING LENGTH

- WL00** - Standard
- WL25** - 25 Ft Leads

12 FINISH

- Standard Finishes
BLP, BZP, WHP, SAP, BLW, BZW, WHW, VER
- Premium Finishes
CMG, SMG, RMG, AMG, TXF, BCM, BGE, WCP, OCP, HUG, ABP, BPP, SDS, WIR, CAP, CRM, AQW, NBP
- Other - RAL
RAL
- Other - Custom Color
CUS
- Brass Finishes
MAB, POB, MIT
- Stainless Steel Finishes
MAS, POS

NOTE: Not all configurations may be compatible with one another. Please configure the product for specific 2D, Photometry, Downloads, Spec Sheet and Compatible mountings and power supplies.

MINI MICRO - In-grade - Low Voltage - LED High-Power - Flush Mount - Asymmetrical Optics

Features



Lens factory adhered to fixture cap providing hermetically sealed optical compartment



Manufactured in the USA with sustainable processes



Water-tight anti-siphon plug prevents moisture ingress from wireways



Secured with tamper-resistant, stainless steel hardware



Easily replaceable modular components reduce waste and extend fixture life

WARNING: This is a low voltage product. Please check "Mountings With A Power Supply" or "Power Supplies" to order remote transformer separately.

Technical

Driver: Low Voltage

Light Source (Type): LED High-Power

Material: Aluminum, Brass, Stainless Steel

CCT (K): Amber, 2700, 3500, 3000, 4000

CRI: 80, 90

Input Power (W): 3

Delivered Lumens (lm): 151 - 178

Beam Angle (°): 17x31

Mount: Faceplate Flush Mount

Version: Asymmetrical Optics

Lens: Clear (Standard)

Shielding: Not included (Standard), Honeycomb Baffle

Wiring Length: Standard, 25 Ft Leads

Finish: Standard Finishes, Premium Finishes, Other - RAL, Other - Custom Color, Brass Finishes, Stainless Steel Finishes

Body: Unibody design, with enclosed, water-proof wireway and integral heat sink, fully machined from solid billet.

Material Detail: Furnished in stainless steel (304), Furnished in brass (360), Furnished in copper-free aluminum (6061-T6).

Light Source Detail: High power LEDs modular design with electrical disconnects., Non-dimming.

Optics: Interchangeable optics permit changes in the field.

Hardware: Tamper-resistant, stainless steel hardware. Hardware is black oxide treated for additional corrosion resistance.

Sealing: 'O' Ring provides water-tight seal.

Finish Detail: Powder coat or metal finish options available for brass material., Metal finish option only for stainless steel material., StarGuard, our 15-stage chromate-free process, cleans and conversion coats aluminum components prior to application of Class 'A' TGIC polyester powder coating. It is RoHS compliant.

Warranty: 5-year limited warranty.

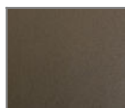
MINI MICRO - In-grade - Low Voltage - LED High-Power - Flush Mount - Asymmetrical Optics

Finishes

STANDARD FINISHES



[BLP] Satin Black



[BZP] Satin Bronze



[WHP] Satin White



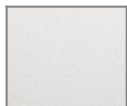
[SAP] Satin Aluminum



[BLW] Black Wrinkle



[BZW] Bronze Wrinkle

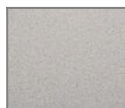


[WHW] White Wrinkle



[VER] Verde

PREMIUM FINISHES



[CMG] Cascade Mountain Granite



[SMG] Sierra Mountain Granite



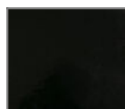
[RMG] Rocky Mountain Granite



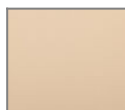
[AMG] Aleutian Mountain Granite



[TXF] Textured Forest



[BCM] Black Chrome



[BGE] Beige



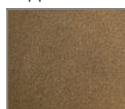
[WCP] Weathered Copper



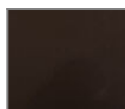
[OCP] Old Copper



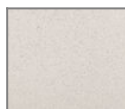
[HUG] Hunter Green



[ABP] Antique Brass Powder



[BPP] Brown Patina Powder



[SDS] Sonoran Desert Sandstone



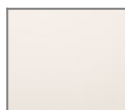
[WIR] Weathered Iron



[CAP] Clear Anodized Powder



[CRM] Cream



[AQW] Antique White



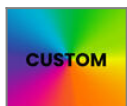
[NBP] Natural Brass Powder

OTHER - RAL



[RAL] RAL Color

OTHER - CUSTOM COLOR



[CUS] Custom Color

BRASS FINISHES



[MAB] Machined (Brass)



[POB] Polished (Brass)



[MIT] Mitique

STAINLESS STEEL FINISHES



[MAS] Machined (Stainless Steel)



[POS] Polished (Stainless Steel)

MINI MICRO - In-grade - Low Voltage - LED High-Power - Flush Mount - Asymmetrical Optics

Light Source

Light Source	Optic	Beam Angle	CCT (K)	CRI	R9	Input Power (W)	Delivered Lumens (Lm)	CBCP
e70	ASY - Asymmetrical	17x31	2700	80	>15	3	151	613
e71	ASY - Asymmetrical	17x31	3000	80	>15	3	158	642
e72	ASY - Asymmetrical	17x31	4000	80	>15	3	178	721
e73	ASY - Asymmetrical	17x31	Amber			3		
e85	ASY - Asymmetrical	17x31	2700	90	>50	3		
e86	ASY - Asymmetrical	17x31	3000	90	>50	3		
e87	ASY - Asymmetrical	17x31	3500	80	>15	3		