

# NITE STAR - Wall Mount - Line Voltage Via Transformer - LED High-Power - Style A - Single - Power Canopy PC1 - Wildlife Friendly

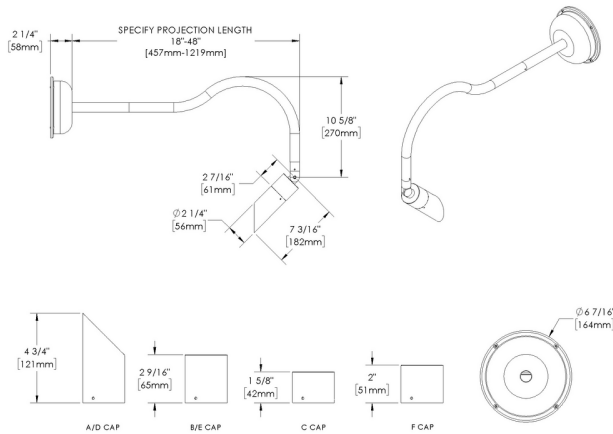
WILDLIFE FRIENDLY



Downloads

- Product Images (.zip)
- Technical Drawing (.zip)
- 2D (.dwg)
- 2D (.dxf)
- Installation Instructions (.pdf)

Product Variant Examples



AMERICAN MADE + EMPLOYEE OWNED | 40429 Brickyard Drive, Madera, CA 93636 | +1 (559) 438-5800 | info@bklighting.com | bklighting.com

Copyright © B-K Lighting, Inc. This document contains proprietary information of B-K Lighting, inc. and its receipt or possession does not convey any rights to reproduce, disclose its contents, or to manufacture, use or sell anything it may describe.

Technical information is subject to change at the discretion of B-K Lighting Inc. For the most current technical data, please refer to bklighting.com

# NITE STAR - Wall Mount - Line Voltage Via Transformer - LED High-Power - Style A - Single - Power Canopy PC1 - Wildlife Friendly

## Available Logic & Configurations

**NS-** 01   **WM-** 02   **LIT-** 03   **LHP-** 04   **AL-** 05   **RO-** 06A   **PC1-** 06B   **-** 06C   **SA-F10-** 06D   **-** 06F

**01 SERIES**

**NS** - NITE STAR

**02 CATEGORY**

**WM** - Wall Mount

**03 DRIVER**

**LIT** - Line Voltage Via Transformer

**04 LIGHT SOURCE (TYPE)**

**LHP** - LED High-Power

**05 MATERIAL**

**AL** - Aluminum

**06A SHAPE**

**RO** - Round

**06B MOUNT**

**PC1** - Power Canopy PC1

**06C STYLE**

**CA** - Cap A - 45° (With Weephole)

**CB** - Cap B - 90° (With Weephole)

**CC** - Cap C - Flush Lens

**CD** - Cap D - 45°

**CE** - Cap E - 90°

**CF** - Cap F - Extended Flush Lens

**06D VERSION**

**SA-F10** - Style A - Single

**06F SIZE**

**ST18** - Stem length: 18"

**ST24** - Stem length: 24"

**ST30** - Stem length: 30"

**ST36** - Stem length: 36"

**e74-** 07   **-** 08   **NON-** 09   **12-** 10A   **-** 10B   **WL00-** 11   **-** 12

**07 LIGHT SOURCE**

**e74** - Amber - 7W (260 - 299 lm)

**08 OPTIC**

**NSP** - Narrow Spot (13°)

**SP** - Spot (16°)

**SP2** - Spot (23°)

**MFL** - Medium Flood (31°)

**09 CONTROL**

**NON** - Non-dimming

**10A LENS**

**12** - Soft Focus

**10B SHIELDING**

**00** - Not included (Standard)

**11** - Honeycomb Baffle

**11 WIRING LENGTH**

**WL00** - Standard

**12 FINISH**

Standard Finishes

**BLP, BZP, WHP, SAP, BLW, BZW, WHW, VER**

Premium Finishes

**CMG, SMG, RMG, AMG, TXF, BCM, BGE, WCP, OCP, HUG, ABP, BPP, SDS,**

**WIR, CAP, CRM, AQW, NBP**

Other - RAL

**RAL**

Other - Custom Color

**CUS**

**NOTE:** Not all configurations may be compatible with one another. Please configure the product for specific 2D, Photometry, Downloads, Spec Sheet and Compatible mountings and power supplies.

# NITE STAR - Wall Mount - Line Voltage Via Transformer - LED High-Power - Style A - Single - Power Canopy PC1 - Wildlife Friendly

## Features



Anti-condensation vent allows moisture to exit the fixture but never enter in



Lens factory adhered to fixture cap providing hermetically sealed optical compartment



Manufactured in the USA with sustainable processes



Aim & Lock knuckle eliminates need for re-aiming & adjustments



Water-tight anti-siphon plug prevents moisture ingress from wireways



Secured with tamper-resistant, stainless steel hardware



Easily replaceable modular components reduce waste and extend fixture life



Slip fit cap & high temp. silicone 'O' ring provides reliable water-tight seal



Solid billet fixture body provides unmatched durability and heat management



360SL knuckle provides 360° horizontal rotation and vertical adjustment

## Technical

**Driver:** Line Voltage Via Transformer

**Light Source (Type):** LED High-Power

**Material:** Aluminum

**CCT (K):** Amber

**Input Power (W):** 7

**Delivered Lumens (lm):** 260 - 299

**Beam Angle (°):** 13, 16, 23, 31

**Control:** Non-dimming

**Shape:** Round

**Mount:** Power Canopy PC1

**Style:** Cap A - 45° (With Weephole), Cap B - 90° (With Weephole), Cap C - Flush Lens, Cap D - 45°, Cap E - 90°, Cap F - Extended Flush Lens

**Version:** Style A - Single

**Size:** Stem length: 18", Stem length: 24", Stem length: 30", Stem length: 36"

**Lens:** Soft Focus

**Shielding:** Not included (Standard), Honeycomb Baffle

**Wiring Length:** Standard

**Finish:** Standard Finishes, Premium Finishes, Other - RAL, Other - Custom Color

**Body:** Unibody design with enclosed, water-proof wireway, integral heat sink, fully machined from solid billet, anti-condensation and corrosion vent equalizes fixture pressure and eliminates potential for damage to internal components.

**Material Detail:** Furnished in copper-free aluminum (6061-T6).

**Aiming:** Knuckle enables 180° vertical adjustment. 'O' Ring helps maintain fixture position. Design withstands 73 lbs. static load prior to movement for optical alignment. Mounts with a 1/2" pipe thread.

**Light Source Detail:** High power LEDs modular design with electrical disconnects.

**Optics:** Interchangeable optics permit changes in the field.

**Hardware:** Tamper-resistant, stainless steel hardware. Hardware is black oxide treated for additional corrosion resistance.

**Sealing:** 'O' Ring provides water-tight seal., Anti-condensation and corrosion vent equalizes fixture pressure and eliminates potential for damage to internal components.

**Note:** Transformer included., Adjust-e-Lume, an LED board feature, allows for dynamic lumen response at the individual fixture. Indexed (100% to 25% nom.) lumen output. Maintains output at desired level or may be changed (A9 to A1). Standard preset from the factory is A9 (100%).

**Finish Detail:** StarGuard, our 15-stage chromate-free process, cleans and conversion coats aluminum components prior to application of Class 'A' TGIC polyester powder coating. It is RoHS compliant.

**Warranty:** 5-year limited warranty.

# NITE STAR - Wall Mount - Line Voltage Via Transformer - LED High-Power - Style A - Single - Power Canopy PC1 - Wildlife Friendly

## Finishes

### STANDARD FINISHES

|                                                                                   |                                                                                   |                                                                                   |
|-----------------------------------------------------------------------------------|-----------------------------------------------------------------------------------|-----------------------------------------------------------------------------------|
|  |  |  |
| [BLP]<br>Satin Black                                                              | [BZP]<br>Satin Bronze                                                             | [WHP]<br>Satin White                                                              |
|  |  |  |
| [SAP]<br>Satin Aluminum                                                           | [BLW]<br>Black Wrinkle                                                            | [BZW]<br>Bronze Wrinkle                                                           |
|  |  |                                                                                   |
| [WHW]<br>White Wrinkle                                                            | [VER]<br>Verde                                                                    |                                                                                   |

### PREMIUM FINISHES

|                                                                                     |                                                                                     |                                                                                      |
|-------------------------------------------------------------------------------------|-------------------------------------------------------------------------------------|--------------------------------------------------------------------------------------|
|    |    |    |
| [CMG]<br>Cascade Mountain Granite                                                   | [SMG]<br>Sierra Mountain Granite                                                    | [RMG]<br>Rocky Mountain Granite                                                      |
|    |    |    |
| [AMG]<br>Aleutian Mountain Granite                                                  | [TXF]<br>Textured Forest                                                            | [BCM]<br>Black Chrome                                                                |
|    |    |    |
| [BGE]<br>Beige                                                                      | [WCP]<br>Weathered Copper                                                           | [OCP]<br>Old Copper                                                                  |
|  |  |  |
| [HUG]<br>Hunter Green                                                               | [ABP]<br>Antique Brass Powder                                                       | [BPP]<br>Brown Patina Powder                                                         |
|  |  |  |
| [SDS]<br>Sonoran Desert Sandstone                                                   | [WIR]<br>Weathered Iron                                                             | [CAP]<br>Clear Anodized Powder                                                       |
|  |  |  |
| [CRM]<br>Cream                                                                      | [AQW]<br>Antique White                                                              | [NBP]<br>Natural Brass Powder                                                        |

### OTHER - RAL



[RAL]  
RAL Color

### OTHER - CUSTOM COLOR



[CUS]  
Custom Color

# NITE STAR - Wall Mount - Line Voltage Via Transformer - LED High-Power - Style A - Single - Power Canopy PC1 - Wildlife Friendly

## Light Source

| Light Source | Optic              | Beam Angle | CCT (K) | CRI | R9 | Input Power (W) | Delivered Lumens (Lm) | CBCP |
|--------------|--------------------|------------|---------|-----|----|-----------------|-----------------------|------|
| e74          | NSP - Narrow Spot  | 13         | Amber   |     |    | 7               | 299                   | 3927 |
| e74          | SP - Spot          | 16         | Amber   |     |    | 7               | 291                   | 2978 |
| e74          | SP2 - Spot         | 23         | Amber   |     |    | 7               | 260                   | 1131 |
| e74          | MFL - Medium Flood | 31         | Amber   |     |    | 7               | 262                   | 741  |