

# NITE STAR - Bollard - Low Voltage - LED High-Power - Style B - 2 Fixtures - Pipe PI1 - 18" Stake - Wildlife Friendly

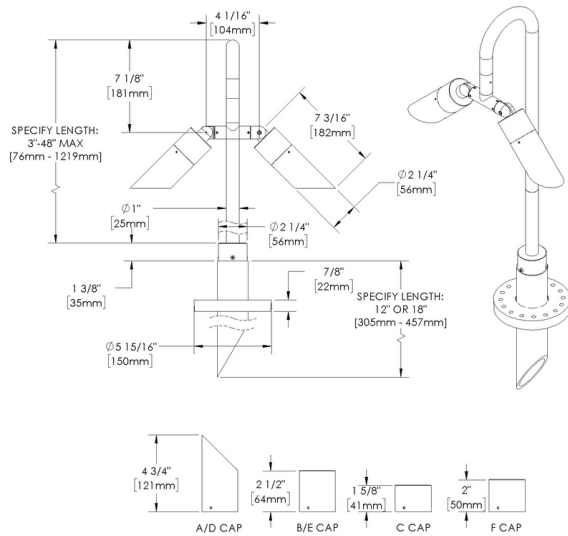
**WILDLIFE FRIENDLY**



**Downloads**

- Product Images (.zip)
- Technical Drawing (.zip)
- 2D (.dwg)
- 2D (.dxf)
- BIM - Revit
- Installation Instructions (.pdf)

**Product Variant Examples**



# NITE STAR - Bollard - Low Voltage - LED High-Power - Style B - 2 Fixtures - Pipe PI1 - 18" Stake - Wildlife Friendly

## Available Logic & Configurations

**NS-** 01   **BO-** 02   **LOD-** 03   **LHP-** 04   **AL-** 05   **RO-** 06A   **PI1-S18-** 06B   **-** 06C   **SB-F20-** 06D   **-** 06F

- 01 SERIES**  
NS - NITE STAR
- 02 CATEGORY**  
BO - Bollard
- 03 DRIVER**  
LOD - Low Voltage
- 04 LIGHT SOURCE (TYPE)**  
LHP - LED High-Power

- 05 MATERIAL**  
AL - Aluminum
- 06A SHAPE**  
RO - Round
- 06B MOUNT**  
PI1-S18 - Pipe PI1 - 18" Stake
- 06C STYLE**  
CA - Cap A - 45° (With Weephole)  
CB - Cap B - 90° (With Weephole)  
CC - Cap C - Flush Lens  
CD - Cap D - 45°  
CE - Cap E - 90°  
CF - Cap F - Extended Flush Lens
- 06D VERSION**  
SB-F20 - Style B - 2 Fixtures
- 06F SIZE**  
H24 - Height: 24"  
H30 - Height: 30"  
H36 - Height: 36"  
H42 - Height: 42"  
H48 - Height: 48"

**e74-** 07   **-** 08   **12-** 10A   **-** 10B   **WL00-** 11   **-** 12

- 07 LIGHT SOURCE**  
e74 - Amber - 7W (260 - 299 lm)
- 08 OPTIC**  
NSP - Narrow Spot (13°)  
SP - Spot (16°)  
SP2 - Spot (23°)  
MFL - Medium Flood (31°)

- 10A LENS**  
12 - Soft Focus
- 10B SHIELDING**  
00 - Not included (Standard)  
11 - Honeycomb Baffle
- 11 WIRING LENGTH**  
WL00 - Standard
- 12 FINISH**  
Standard Finishes  
BLP, BZP, WHP, SAP, BLW, BZW, WHW, VER  
Premium Finishes  
CMG, SMG, RMG, AMG, TXF, BCM, BGE, WCP, OCP, HUG, ABP, BPP, SDS,  
WIR, CAP, CRM, AQW, NBP  
Other - RAL  
RAL  
Other - Custom Color  
CUS

**NOTE:** Not all configurations may be compatible with one another. Please configure the product for specific 2D, Photometry, Downloads, Spec Sheet and Compatible mountings and power supplies.

# NITE STAR - Bollard - Low Voltage - LED High-Power - Style B - 2 Fixtures - Pipe PI1 - 18" Stake - Wildlife Friendly

## Features



Anti-condensation vent allows moisture to exit the fixture but never enter in



Lens factory adhered to fixture cap providing hermetically sealed optical compartment



Manufactured in the USA with sustainable processes



Aim & Lock knuckle eliminates need for re-aiming & adjustments



Water-tight anti-siphon plug prevents moisture ingress from wireways



Secured with tamper-resistant, stainless steel hardware



Easily replaceable modular components reduce waste and extend fixture life



Slip fit cap & high temp. silicone 'O' ring provides reliable water-tight seal



Solid billet fixture body provides unmatched durability and heat management



360SL knuckle provides 360° horizontal rotation and vertical adjustment

**WARNING: This is a low voltage product. Please check "Mountings With A Power Supply" or "Power Supplies" to order remote transformer separately.**

## Technical

**Driver:** Low Voltage

**Light Source (Type):** LED High-Power

**Material:** Aluminum

**CCT (K):** Amber

**Input Power (W):** 7

**Delivered Lumens (lm):** 260 - 299

**Beam Angle (°):** 13, 16, 23, 31

**Shape:** Round

**Mount:** Pipe PI1 - 18" Stake

**Style:** Cap A - 45° (With Weephole), Cap B - 90° (With Weephole), Cap C - Flush Lens, Cap D - 45°, Cap E - 90°, Cap F - Extended Flush Lens

**Version:** Style B - 2 Fixtures

**Size:** Height: 24", Height: 30", Height: 36", Height: 42", Height: 48"

**Lens:** Soft Focus

**Shielding:** Not included (Standard), Honeycomb Baffle

**Wiring Length:** Standard

**Finish:** Standard Finishes, Premium Finishes, Other - RAL, Other - Custom Color

**Body:** Unibody design with enclosed, water-proof wireway, integral heat sink, fully machined from solid billet, anti-condensation and corrosion vent equalizes fixture pressure and eliminates potential for damage to internal components.

**Material Detail:** Furnished in copper-free aluminum (6061-T6).

**Aiming:** 360SL provides biaxial source control with 360° horizontal rotation in addition to vertical adjustment.

**Light Source Detail:** High power LEDs modular design with electrical disconnects.

**Optics:** Interchangeable optics permit changes in the field.

**Hardware:** Tamper-resistant, stainless steel hardware. Hardware is black oxide treated for additional corrosion resistance.

**Sealing:** 'O' Ring provides water-tight seal., Anti-condensation and corrosion vent equalizes fixture pressure and eliminates potential for damage to internal components.

**Note:** Stability Flange included., Adjust-e-Lume, an LED board feature, allows for dynamic lumen response at the individual fixture. Indexed (100% to 25% nom.) lumen output. Maintains output at desired level or may be changed (A9 to A1). Standard preset from the factory is A9 (100%).

**Finish Detail:** StarGuard, our 15-stage chromate-free process, cleans and conversion coats aluminum components prior to application of Class 'A' TGIC polyester powder coating. It is RoHS compliant.

**Warranty:** 5-year limited warranty.

# NITE STAR - Bollard - Low Voltage - LED High-Power - Style B - 2 Fixtures - Pipe PI1 - 18" Stake - Wildlife Friendly

## Finishes

### STANDARD FINISHES

		
[BLP] Satin Black	[BZP] Satin Bronze	[WHP] Satin White
		
[SAP] Satin Aluminum	[BLW] Black Wrinkle	[BZW] Bronze Wrinkle
		
[WHW] White Wrinkle	[VER] Verde	

### PREMIUM FINISHES

		
[CMG] Cascade Mountain Granite	[SMG] Sierra Mountain Granite	[RMG] Rocky Mountain Granite
		
[AMG] Aleutian Mountain Granite	[TXF] Textured Forest	[BCM] Black Chrome
		
[BGE] Beige	[WCP] Weathered Copper	[OCP] Old Copper
		
[HUG] Hunter Green	[ABP] Antique Brass Powder	[BPP] Brown Patina Powder
		
[SDS] Sonoran Desert Sandstone	[WIR] Weathered Iron	[CAP] Clear Anodized Powder
		
[CRM] Cream	[AQW] Antique White	[NBP] Natural Brass Powder

### OTHER - RAL



[RAL]  
RAL Color

### OTHER - CUSTOM COLOR



[CUS]  
Custom Color

# NITE STAR - Bollard - Low Voltage - LED High-Power - Style B - 2 Fixtures - Pipe PI1 - 18" Stake - Wildlife Friendly

## Light Source

Light Source	Optic	Beam Angle	CCT (K)	CRI	R9	Input Power (W)	Delivered Lumens (Lm)	CBCP
e74	NSP - Narrow Spot	13	Amber			7	299	3927
e74	SP - Spot	16	Amber			7	291	2978
e74	SP2 - Spot	23	Amber			7	260	1131
e74	MFL - Medium Flood	31	Amber			7	262	741