

# RECEPTACLE BOLLARD - Bollard

UPGRADED



IP66



### Downloads

[Product Images \(.zip\)](#)

[Technical Drawing \(.zip\)](#)

[BIM - Revit \(.zip\)](#)

[Installation Instructions \(.pdf\)](#)

### Product Variant Examples



# RECEPTACLE BOLLARD - Bollard

## Available Logic & Configurations

**RB-** **BO-** **AL-** **-** **-**  
 01 02 05 06B 06F

### 01 SERIES

**RB** - RECEPTACLE BOLLARD

### 02 CATEGORY

**BO** - Bollard

### 03 DRIVER

-

### 04 LIGHT SOURCE (TYPE)

-

**-** **-**  
 12 13

### 12 FINISH

Standard Finishes

**BLP, BZP, WHP, SAP, BLW, BZW, WHW, VER**

Premium Finishes

**CMG, SMG, RMG, AMG, TXF, BCM, BGE, WCP, OCP, HUG, ABP, BPP, SDS,**

**WIR, CAP, CRM, AQW, NBP**

Other - RAL

**RAL**

Other - Custom Color

**CUS**

### 13 OPTION

**PL** - Pad Lock Cover

**RE1** - Receptacle with 20A GFCI

**RE2** - Receptacle with 20A GFCI and USB Type A/C Charging Ports

### 05 MATERIAL

**AL** - Aluminum

### 06B MOUNT

**AB** - Anchor Base

**PI1-J18** - Pipe P11 - 18" Junction Box

### 06F SIZE

**H18** - Height: 18"

**H21** - Height: 21"

**NOTE:** Not all configurations may be compatible with one another. Please configure the product for specific 2D, Photometry, Downloads, Spec Sheet and Compatible mountings and power supplies.

# RECEPTACLE BOLLARD - Bollard

## Features



Secured with flush, countersunk tamper resistant hardware



Manufactured in the USA with sustainable processes



Easily replaceable modular components reduce waste and extend fixture life

## Technical

**Material:** Aluminum

**Delivered Lumens (lm):** Array

**Mount:** Anchor Base, Pipe P11 - 18" Junction Box

**Size:** Height: 18", Height: 21"

**Finish:** Standard Finishes, Premium Finishes, Other - RAL, Other - Custom Color

**Option:** Pad Lock Cover, Receptacle with 20A GFCI, Receptacle with 20A GFCI and USB Type A/C Charging Ports

**Material Detail:** Furnished in copper-free aluminum (6061-T6).

**Hardware:** Tamper-resistant, stainless steel hardware.

**Sealing:** Weather tight, gasketed in-use receptacle cover.

**Note:** Stability Flange included.

**Finish Detail:** StarGuard, our 15-stage chromate-free process, cleans and conversion coats aluminum components prior to application of Class 'A' TGIC polyester powder coating. It is RoHS compliant.

**Warranty:** 5-year limited warranty.

# RECEPTACLE BOLLARD - Bollard

## Finishes

### STANDARD FINISHES



[BLP]  
Satin Black



[BZP]  
Satin Bronze



[WHP]  
Satin White



[SAP]  
Satin Aluminum



[BLW]  
Black Wrinkle



[BZW]  
Bronze Wrinkle



[WHW]  
White Wrinkle



[VER]  
Verde

### PREMIUM FINISHES



[CMG]  
Cascade Mountain Granite



[SMG]  
Sierra Mountain Granite



[RMG]  
Rocky Mountain Granite



[AMG]  
Aleutian Mountain Granite



[TXF]  
Textured Forest



[BCM]  
Black Chrome



[BGE]  
Beige



[WCP]  
Weathered Copper



[OCP]  
Old Copper



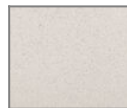
[HUG]  
Hunter Green



[ABP]  
Antique Brass Powder



[BPP]  
Brown Patina Powder



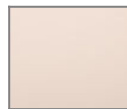
[SDS]  
Sonoran Desert Sandstone



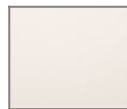
[WIR]  
Weathered Iron



[CAP]  
Clear Anodized Powder



[CRM]  
Cream



[AQW]  
Antique White



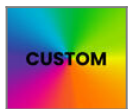
[NBP]  
Natural Brass Powder

### OTHER - RAL



[RAL]  
RAL Color

### OTHER - CUSTOM COLOR



[CUS]  
Custom Color